


Anti-BMX (phospho Y566) antibody ab59409

[2 References](#) [3 图像](#)

概述

产品名称	Anti-BMX (phospho Y566)抗体
描述	兔多克隆抗体to BMX (phospho Y566)
宿主	Rabbit
特异性	This antibody detects endogenous levels of ETK only when phosphorylated at tyrosine 566.
经测试应用	适用于: IHC-P, WB
种属反应性	与反应: Human 预测可用于: Mouse 
免疫原	Synthetic peptide corresponding to Human BMX aa 500-600 (phospho Y566). DQYPVS Database link: P51813
阳性对照	Human thyroid gland tissue
常规说明	<p>The Life Science industry has been in the grips of a reproducibility crisis for a number of years. Abcam is leading the way in addressing this with our range of recombinant monoclonal antibodies and knockout edited cell lines for gold-standard validation. Please check that this product meets your needs before purchasing.</p> <p>If you have any questions, special requirements or concerns, please send us an inquiry and/or contact our Support team ahead of purchase. Recommended alternatives for this product can be found below, along with publications, customer reviews and Q&As</p>

性能

形式	Liquid
存放说明	Shipped at 4°C. Store at -20°C. Stable for 12 months at -20°C.
存储溶液	pH: 7.40 Preservative: 0.02% Sodium azide Constituents: PBS, 50% Glycerol (glycerin, glycerine), 0.87% Sodium chloride
纯度	Without Mg+2 and Ca+2 Immunogen affinity purified
纯化说明	Affinity purified from rabbit antiserum by affinity chromatography using epitope specific phosphopeptide. The antibody against non phosphopeptide was removed by chromatography using non phosphopeptide corresponding to the phosphorylation site.

克隆 多克隆
同种型 IgG

应用

The Abpromise guarantee **Abpromise™**承诺保证使用ab59409于以下的经测试应用

“应用说明”部分 下显示的仅为推荐的起始稀释度;实际最佳的稀释度/浓度应由使用者检定。

应用	Ab评论	说明
IHC-P		Use at an assay dependent concentration.
WB		1/3000. Detects a band of approximately 74 kDa (predicted molecular weight: 78 kDa).

靶标

功能 Activity is required for interleukin 6 (IL-6) induced differentiation. May play a role in the growth and differentiation of hematopoietic cells. May be involved in signal transduction in endocardial and arterial endothelial cells.

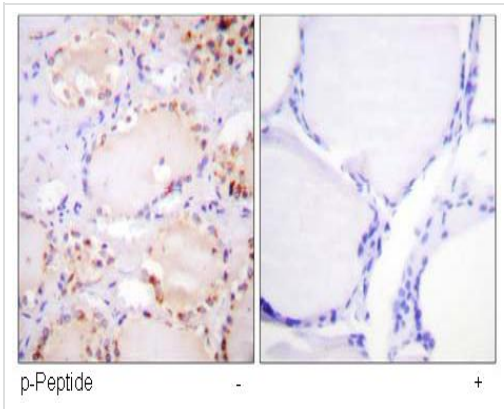
组织特异性 Preferentially expressed in epithelial and endothelial cells.

序列相似性 Belongs to the protein kinase superfamily. Tyr protein kinase family. TEC subfamily.
Contains 1 Btk-type zinc finger.
Contains 1 PH domain.
Contains 1 protein kinase domain.
Contains 1 SH2 domain.

结构域 SH2 domain mediates interaction with RUFY1.

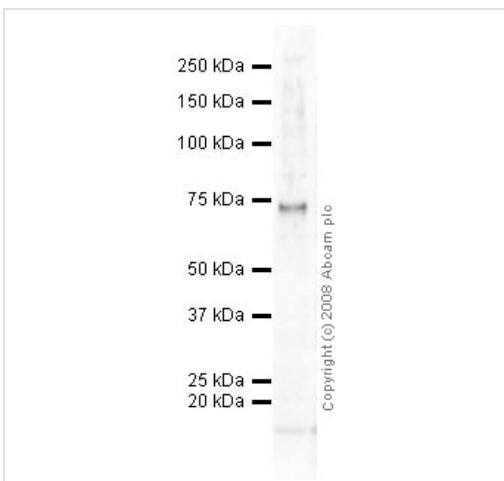
细胞定位 Cytoplasm.

图片



Immunohistochemistry (Formalin/PFA-fixed paraffin-embedded sections) - Anti-BMX(phospho Y566) antibody (ab59409)

Immunohistochemical analysis of paraffin embedded human thyroid gland tissue using ab59409 at a 1/50 dilution, in the presence (right) and absence (left) of immunizing phosphopeptide.



Western blot - Anti-BMX (phospho Y566) antibody (ab59409)

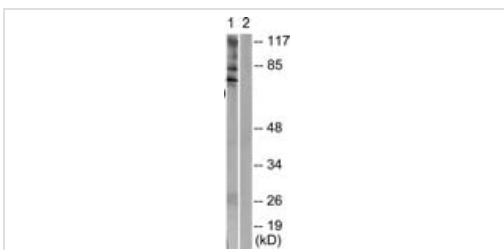
Anti-BMX (phospho Y566) antibody (ab59409) at 1 µg/ml + HeLa (Human epithelial carcinoma cell line) Whole Cell Lysate at 10 µg

Secondary

Goat polyclonal to Rabbit IgG - H&L - Pre-Adsorbed (HRP) at 1/3000 dilution

Predicted band size: 78 kDa

Observed band size: 74 kDa



Western blot - Anti-BMX (phospho Y566) antibody (ab59409)

All lanes : Anti-BMX (phospho Y566) antibody (ab59409)

Lane 1 : Extracts from HeLa cells treated with Serum 20% 15'

Lane 2 : Extracts from HeLa cells treated with Serum 20% 15' and with the synthesized peptide.

Predicted band size: 78 kDa

Please note: All products are "FOR RESEARCH USE ONLY. NOT FOR USE IN DIAGNOSTIC PROCEDURES"

Our Abpromise to you: Quality guaranteed and expert technical support

- Replacement or refund for products not performing as stated on the datasheet

- Valid for 12 months from date of delivery
- Response to your inquiry within 24 hours

- We provide support in Chinese, English, French, German, Japanese and Spanish
- Extensive multi-media technical resources to help you
- We investigate all quality concerns to ensure our products perform to the highest standards

If the product does not perform as described on this datasheet, we will offer a refund or replacement. For full details of the Abpromise, please visit <https://www.abcam.cn/abpromise> or contact our technical team.

Terms and conditions

- Guarantee only valid for products bought direct from Abcam or one of our authorized distributors