


Anti-BMP4 antibody ab39973

★★★★★ [14 Abreviews](#) [87 References](#) [4 图像](#)

概述

产品名称	Anti-BMP4抗体
描述	兔多克隆抗体to BMP4
宿主	Rabbit
特异性	Replenishment batches of our polyclonal antibody, ab39973 are tested in WB. Previous batches were additionally validated in ICC/IF. This application is still expected to work and is covered by our Abpromise guarantee. You may also be interested in our alternative recombinant antibody, ab124715 .
经测试应用	适用于: WB, ICC/IF
种属反应性	与反应: Mouse, Rat, Human 预测可用于: Cow, Pig 
免疫原	Synthetic peptide conjugated to KLH derived from within residues 50 - 150 of Human BMP4.参阅 Abcam的专有抗原政策(Peptide available as ab40140 .)
常规说明	<p>The Life Science industry has been in the grips of a reproducibility crisis for a number of years. Abcam is leading the way in addressing this with our range of recombinant monoclonal antibodies and knockout edited cell lines for gold-standard validation. Please check that this product meets your needs before purchasing.</p> <p>If you have any questions, special requirements or concerns, please send us an inquiry and/or contact our Support team ahead of purchase. Recommended alternatives for this product can be found below, along with publications, customer reviews and Q&As</p>

性能

形式	Liquid
存放说明	Shipped at 4°C. Store at +4°C short term (1-2 weeks). Upon delivery aliquot. Store at -20°C or -80°C. Avoid freeze / thaw cycle.
存储溶液	pH: 7.40 Preservative: 0.02% Sodium azide Constituent: PBS
	Batches of this product that have a concentration < 1mg/ml may have BSA added as a stabilising agent. If you would like information about the formulation of a specific lot, please contact our scientific support team who will be happy to help.

纯度	Immunogen affinity purified
克隆	多克隆
同种型	IgG

应用

The Abpromise guarantee **Abpromise™**承诺保证使用ab39973于以下的经测试应用

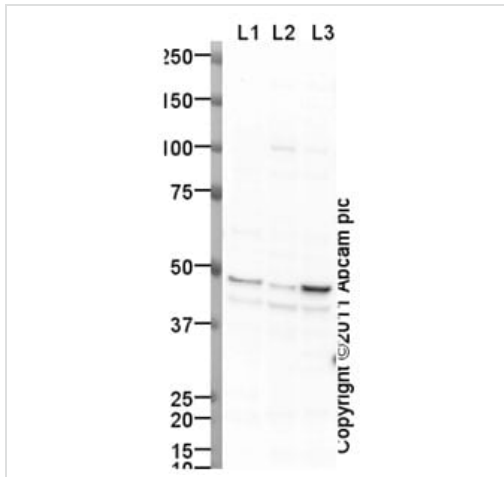
“应用说明”部分 下显示的仅为推荐的起始稀释度 ;实际最佳的稀释度/浓度应由使用者检定。

应用	Ab评论	说明
WB	★★★★★ (5)	Use a concentration of 1 µg/ml. Detects a band of approximately 47 kDa (predicted molecular weight: 47 kDa).
ICC/IF	★★★★★ (1)	Use a concentration of 1 µg/ml.

靶标

功能	Induces cartilage and bone formation. Also act in mesoderm induction, tooth development, limb formation and fracture repair. Acts in concert with PTHLH/PTHRP to stimulate ductal outgrowth during embryonic mammary development and to inhibit hair follicle induction.
组织特异性	Expressed in the lung and lower levels seen in the kidney. Present also in normal and neoplastic prostate tissues, and prostate cancer cell lines.
疾病相关	<p>Defects in BMP4 are the cause of microphthalmia syndromic type 6 (MCOPS6) [MIM:607932]; also known as microphthalmia and pituitary anomalies or microphthalmia with brain and digit developmental anomalies. Microphthalmia is a clinically heterogeneous disorder of eye formation, ranging from small size of a single eye to complete bilateral absence of ocular tissues (anophthalmia). In many cases, microphthalmia/anophthalmia occurs in association with syndromes that include non-ocular abnormalities. MCOPS6 is characterized by microphthalmia/anophthalmia associated with facial, genital, skeletal, neurologic and endocrine anomalies.</p> <p>Defects in BMP4 are the cause of non-syndromic orofacial cleft type 11 (OFC11) [MIM:600625]. Non-syndromic orofacial cleft is a common birth defect consisting of cleft lips with or without cleft palate. Cleft lips are associated with cleft palate in two-third of cases. A cleft lip can occur on one or both sides and range in severity from a simple notch in the upper lip to a complete opening in the lip extending into the floor of the nostril and involving the upper gum. OFC11 is an unusual anomaly consisting of a paramedian scar of the upper lip with an appearance suggesting that a typical cleft lip was corrected in utero.</p>
序列相似性	Belongs to the TGF-beta family.
细胞定位	Secreted > extracellular space > extracellular matrix.

图片



Western blot - Anti-BMP4 antibody (ab39973)

All lanes : Anti-BMP4 antibody (ab39973) at 1 µg/ml

Lane 1 : Human brain tissue lysate - total protein ([ab29466](#))

Lane 2 : Brain (Mouse) Tissue Lysate

Lane 3 : Brain (Rat) Tissue Lysate

Lysates/proteins at 10 µg per lane.

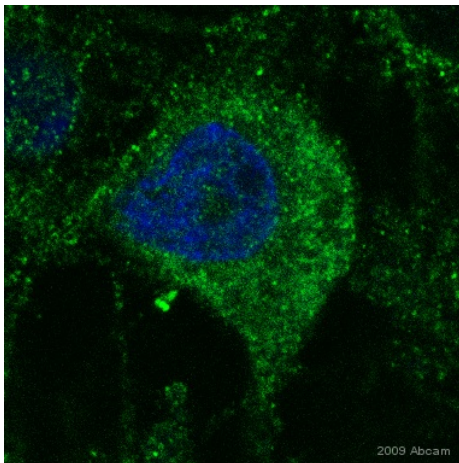
Secondary

All lanes : Goat Anti-Rabbit IgG H&L (HRP) preadsorbed ([ab97080](#)) at 1/5000 dilution

Predicted band size: 47 kDa

Observed band size: 47 kDa

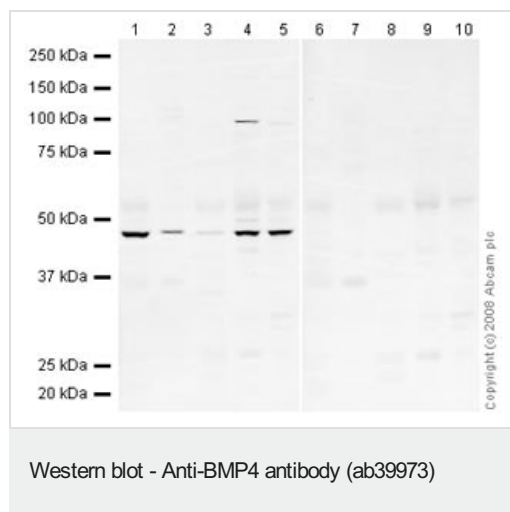
Additional bands at: 42 kDa. We are unsure as to the identity of these extra bands.



Immunocytochemistry/ Immunofluorescence - Anti-BMP4 antibody (ab39973)

This image is courtesy of Ruma Raha-Chowdhury, University Of Cambridge, United Kingdom

ICC/IF image of ab39973 staining primary Rat hippocampal neurons. The cells were 4% PFA fixed (10 min) and then incubated in 1%BSA / 5% normal donkey serum / 0.3M glycine in 0.1% PBS-Tritonx100 for 1h to permeabilise the cells and block non-specific protein-protein interactions. The cells were then incubated with the antibody (ab39973, 1µg/ml) overnight at +4°C. The secondary antibody (green) was Alexa Fluor® 488donkey anti-rabbit IgG (H+L) used at a 1/1000 dilution for 1h. DAPI was used to stain the cell nuclei (blue) at a concentration of 1.43µM.



All lanes : Anti-BMP4 antibody (ab39973) at 1 µg/ml

Lane 1 : Human brain tissue lysate - total protein ([ab29466](#))

Lane 2 : Brain (Mouse) Mouse Tissue Lysate

Lane 3 : Human liver tissue lysate - total protein ([ab29889](#))

Lane 4 : Human heart tissue lysate - total protein ([ab29431](#))

Lane 5 : Human skeletal muscle tissue lysate - total protein ([ab29330](#))

Lane 6 : Human brain tissue lysate - total protein ([ab29466](#)) with Human BMP4 peptide ([ab40140](#)) at 1 µg/ml

Lane 7 : Brain (Mouse) Mouse Tissue Lysate with Human BMP4 peptide ([ab40140](#)) at 1 µg/ml

Lane 8 : Human liver tissue lysate - total protein ([ab29889](#)) with Human BMP4 peptide ([ab40140](#)) at 1 µg/ml

Lane 9 : Human heart tissue lysate - total protein ([ab29431](#)) with Human BMP4 peptide ([ab40140](#)) at 1 µg/ml

Lane 10 : Human skeletal muscle tissue lysate - total protein ([ab29330](#)) with Human BMP4 peptide ([ab40140](#)) at 1 µg/ml

Lysates/proteins at 10 µg per lane.

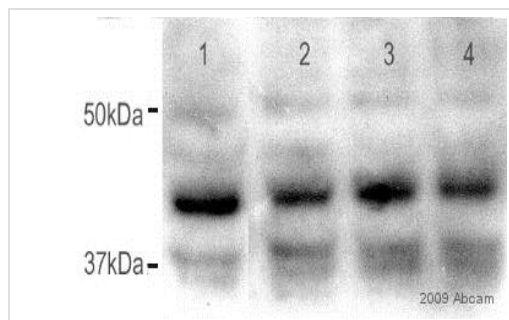
Secondary

All lanes : IRDye 680 Conjugated Goat Anti-Rabbit IgG (H+L) at 1/10000 dilution

Performed under reducing conditions.

Predicted band size: 47 kDa

ab39973 detects a 47kDa band that we believe corresponds to the pre-cleaved form of BMP4 with the immunizing peptide raised against a region located in the propeptide. Abcam welcomes customer feedback and would appreciate any comments regarding this product and the data presented above.



Western blot - Anti-BMP4 antibody (ab39973)

This image is courtesy of Ruma Raha-Chowdhury,
University Of Cambridge, United Kingdom

All lanes : Anti-BMP4 antibody (ab39973) at 1/1000 dilution

All lanes : mouse brain

Lysates/proteins at 20 µg per lane.

Secondary

All lanes : Dako Cytomation P0260

Conjugation: HRP at 1/3000 dilution

Developed using the ECL technique.

Performed under reducing conditions.

Predicted band size: 47 kDa

Exposure time: 1 minute

Please note: All products are "FOR RESEARCH USE ONLY. NOT FOR USE IN DIAGNOSTIC PROCEDURES"

Our Abpromise to you: Quality guaranteed and expert technical support

- Replacement or refund for products not performing as stated on the datasheet
- Valid for 12 months from date of delivery
- Response to your inquiry within 24 hours
- We provide support in Chinese, English, French, German, Japanese and Spanish
- Extensive multi-media technical resources to help you
- We investigate all quality concerns to ensure our products perform to the highest standards

If the product does not perform as described on this datasheet, we will offer a refund or replacement. For full details of the Abpromise, please visit <https://www.abcam.cn/abpromise> or contact our technical team.

Terms and conditions

- Guarantee only valid for products bought direct from Abcam or one of our authorized distributors