



Anti-BMP2 antibody ab14933

★★★★★ [14 Abreviews](#) [161 References](#) [1 图像](#)

概述

产品名称	Anti-BMP2抗体
描述	兔多克隆抗体to BMP2
宿主	Rabbit
特异性	ab14933 detects only the pro-form of the BMP2
经测试应用	适用于: WB
种属反应性	与反应: Human
免疫原	<p>Synthetic peptide corresponding to Mouse BMP2 aa 45-60 (N terminal) conjugated to Keyhole Limpet Haemocyanin (KLH).</p> <p>Sequence:</p> <p>SEDVLSEFELRLLSMF</p> <p>Database link: P21274 (Peptide available as ab80798)</p> <p> Run BLAST with  Run BLAST with</p>
阳性对照	WB: HeLa, THP, HepG2 and Huh7 cells
常规说明	<p>The Life Science industry has been in the grips of a reproducibility crisis for a number of years. Abcam is leading the way in addressing this with our range of recombinant monoclonal antibodies and knockout edited cell lines for gold-standard validation. Please check that this product meets your needs before purchasing.</p> <p>If you have any questions, special requirements or concerns, please send us an inquiry and/or contact our Support team ahead of purchase. Recommended alternatives for this product can be found below, along with publications, customer reviews and Q&As</p>

性能

形式	Liquid
存放说明	Shipped at 4°C. Store at +4°C short term (1-2 weeks). Upon delivery aliquot. Store at -20°C or -80°C. Avoid freeze / thaw cycle.
存储溶液	<p>pH: 7.40</p> <p>Preservative: 0.02% Sodium azide</p> <p>Constituents: 30% Glycerol, 0.75% BSA</p>

The antibody is provided in antibody stabilization buffer containing phosphate buffer, pH 7.4, glycerol, stabilizing proteins and preservatives. The exact buffer contents are considered proprietary.

纯度	Immunogen affinity purified
克隆	多克隆
同种型	IgG

应用

The Abpromise guarantee **Abpromise™** 承诺保证使用 ab14933 于以下的经测试应用

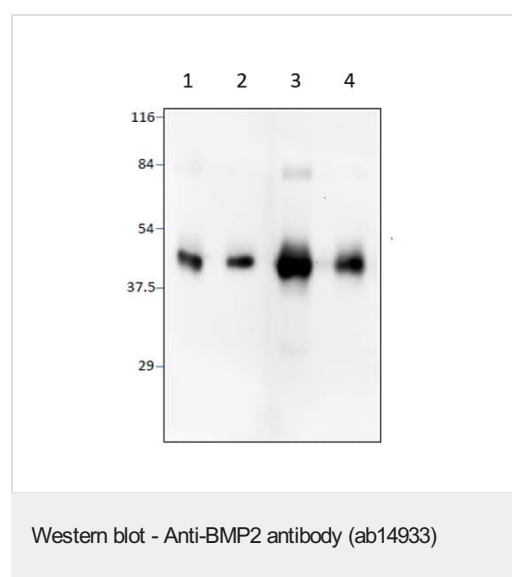
“应用说明”部分 下显示的仅为推荐的起始稀释度;实际最佳的稀释度/浓度应由使用者检定。

应用	Ab 评论	说明
WB	★★★★★ (6)	1/500 - 1/1000. Detects a band of approximately 45 kDa.

靶标

功能	Induces cartilage and bone formation.
组织特异性	Particularly abundant in lung, spleen and colon and in low but significant levels in heart, brain, placenta, liver, skeletal muscle, kidney, pancreas, prostate, ovary and small intestine.
序列相似性	Belongs to the TGF-beta family.
细胞定位	Secreted.

图片



All lanes : Anti-BMP2 antibody (ab14933) at 1/500 dilution

Lane 1 : HeLa cells

Lane 2 : THP cells

Lane 3 : HepG2 cells

Lane 4 : Huh7 cells

Cell extracts were made in protein extraction buffer (Solobuffer) with protease inhibitor cocktail.

Total 40-50ug of protein was applied in each lane on a 10% SDSPAGE,

The gel was transferred on to Immobilon F and blotted with ab14933.

Please note: All products are "FOR RESEARCH USE ONLY. NOT FOR USE IN DIAGNOSTIC PROCEDURES"

Our Abpromise to you: Quality guaranteed and expert technical support

- Replacement or refund for products not performing as stated on the datasheet
- Valid for 12 months from date of delivery
- Response to your inquiry within 24 hours

- We provide support in Chinese, English, French, German, Japanese and Spanish
- Extensive multi-media technical resources to help you
- We investigate all quality concerns to ensure our products perform to the highest standards

If the product does not perform as described on this datasheet, we will offer a refund or replacement. For full details of the Abpromise, please visit <https://www.abcam.cn/abpromise> or contact our technical team.

Terms and conditions

- Guarantee only valid for products bought direct from Abcam or one of our authorized distributors