


### Anti-BMP15 antibody [EPR5137] ab108413

重组 RabMAb

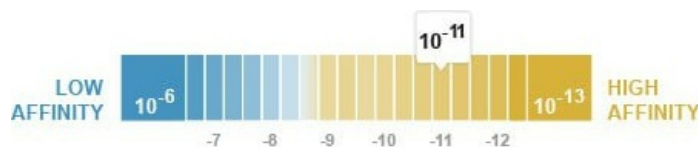
[1 Abreviews](#) [2 References](#) [4 图像](#)

#### 概述

<b>产品名称</b>	Anti-BMP15抗体[EPR5137]
<b>描述</b>	兔单克隆抗体[EPR5137] to BMP15
<b>宿主</b>	Rabbit
<b>经测试应用</b>	<b>适用于:</b> WB, Flow Cyt (Intra) <b>不适用于:</b> ICC/IF, IHC-P or IP
<b>种属反应性</b>	<b>与反应:</b> Human <b>预测可用于:</b> Mouse, Rat 
<b>免疫原</b>	Synthetic peptide. This information is proprietary to Abcam and/or its suppliers.
<b>阳性对照</b>	Ovary cancer, uterus, HL-60, NIH:OVCAR-3, Human testis, and HeLa cell lysates; Hela cells
<b>常规说明</b>	This product is a recombinant monoclonal antibody, which offers several advantages including: <ul style="list-style-type: none"> <li>- High batch-to-batch consistency and reproducibility</li> <li>- Improved sensitivity and specificity</li> <li>- Long-term security of supply</li> <li>- Animal-free production</li> </ul> For more information <a href="#">see here</a> . Our RabMAb <sup>®</sup> technology is a patented hybridoma-based technology for making rabbit monoclonal antibodies. For details on our patents, please refer to <a href="#">RabMAb<sup>®</sup> patents</a> .

#### 性能

<b>形式</b>	Liquid
<b>存放说明</b>	Shipped at 4°C. Store at -20°C. Stable for 12 months at -20°C.
<b>解离常数 (K<sub>D</sub>)</b>	K <sub>D</sub> = 8.80 x 10 <sup>-11</sup> M



[Learn more about K<sub>D</sub>](#)

<b>存储溶液</b>	pH: 7.20
-------------	----------

Preservative: 0.05% Sodium azide  
Constituents: 0.1% BSA, 40% Glycerol (glycerin, glycerine), 9.85% Tris glycine, 50% Tissue culture supernatant

纯度 Protein A purified  
克隆 单克隆  
克隆编号 EPR5137  
同种型 IgG

## 应用

**The Abpromise guarantee** **Abpromise™** 承诺保证使用ab108413于以下的经测试应用

“应用说明”部分 下显示的仅为推荐的起始稀释度;实际最佳的稀释度/浓度应由使用者检定。

应用	Ab评论	说明
WB		1/1000 - 1/10000. Predicted molecular weight: 45 kDa.
Flow Cyt (Intra)		1/10 - 1/100. <b>ab172730</b> - Rabbit monoclonal IgG, is suitable for use as an isotype control with this antibody.

应用说明 Is unsuitable for ICC/IF, IHC-P or IP.

## 靶标

功能 May be involved in follicular development. Oocyte-specific growth/differentiation factor that stimulates folliculogenesis and granulosa cell (GC) growth.

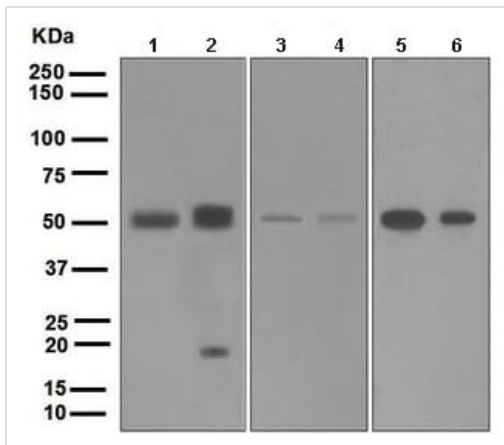
疾病相关 Defects in BMP15 are the cause of ovarian dysgenesis type 2 (ODG2) [MIM:300510]; also known as X-linked hypergonadotropic ovarian dysgenesis or hypergonadotropic ovarian failure due to ovarian dysgenesis. Ovarian dysgenesis leads to ovarian failure and accounts for about half of the cases of primary amenorrhea.

Defects in BMP15 are the cause of premature ovarian failure type 4 (POF4) [MIM:300510]. An ovarian disorder defined as the cessation of ovarian function under the age of 40 years. It is characterized by oligomenorrhea or amenorrhea, in the presence of elevated levels of serum gonadotropins and low estradiol.

序列相似性 Belongs to the TGF-beta family.

细胞定位 Secreted.

## 图片



Western blot - Anti-BMP15 antibody [EPR5137] (ab108413)

**All lanes :** Anti-BMP15 antibody [EPR5137] (ab108413) at 1/1000 dilution

**Lane 1 :** Ovary cancer tissue lysate

**Lane 2 :** Uterus tissue lysate

**Lane 3 :** HL-60 cell lysate

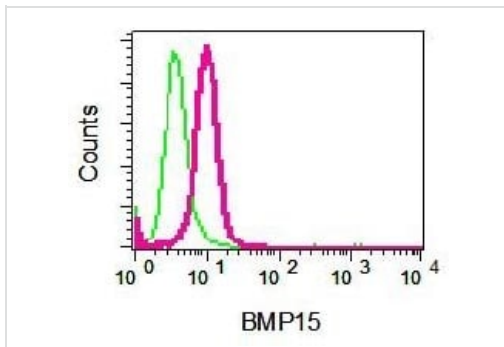
**Lane 4 :** NIH:OVCAR-3 cell lysate

**Lane 5 :** Human testis tissue lysate

**Lane 6 :** HeLa cell lysate

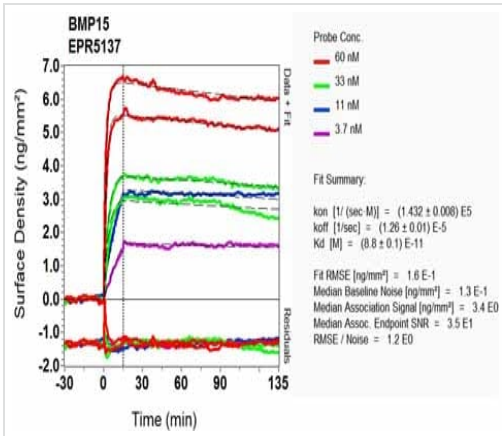
Lysates/proteins at 10 µg per lane.

**Predicted band size:** 45 kDa



Flow Cytometry (Intracellular) - Anti-BMP15 antibody [EPR5137] (ab108413)

Intracellular flow cytometric analysis of BMP15 in permeabilized HeLa cells using ab108413 at 1/10 dilution (red) or a rabbit IgG (negative) (green).



OI-RD Scanning - Anti-BMP15 antibody [EPR5137]  
(ab108413)

Equilibrium disassociation constant ( $K_D$ )

Learn more about  $K_D$

[Click here to learn more about  \$K\_D\$](#)

Why choose a recombinant antibody?

**Research with confidence**  
Consistent and reproducible results

**Long-term and scalable supply**  
Recombinant technology

**Success from the first experiment**  
Confirmed specificity

**Ethical standards compliant**  
Animal-free production

Anti-BMP15 antibody [EPR5137] (ab108413)

**Please note:** All products are "FOR RESEARCH USE ONLY. NOT FOR USE IN DIAGNOSTIC PROCEDURES"

### Our Abpromise to you: Quality guaranteed and expert technical support

- Replacement or refund for products not performing as stated on the datasheet
- Valid for 12 months from date of delivery
- Response to your inquiry within 24 hours
- We provide support in Chinese, English, French, German, Japanese and Spanish
- Extensive multi-media technical resources to help you
- We investigate all quality concerns to ensure our products perform to the highest standards

If the product does not perform as described on this datasheet, we will offer a refund or replacement. For full details of the Abpromise, please visit <https://www.abcam.cn/abpromise> or contact our technical team.

### Terms and conditions

- Guarantee only valid for products bought direct from Abcam or one of our authorized distributors