



Anti-Bmf antibody ab9655

★★★★☆ [4 Abreviews](#) [9 References](#) [4 图像](#)

概述

产品名称	Anti-Bmf抗体
描述	兔多克隆抗体to Bmf
宿主	Rabbit
经测试应用	适用于: WB, ICC/IF, IHC-P
种属反应性	与反应: Mouse, Rat, Human
免疫原	Synthetic peptide: EPSQCVEELEDV , corresponding to amino acids 2-14 of Human Bmf. (Peptide available as ab9656).  Run BLAST with  Run BLAST with

常规说明

The Life Science industry has been in the grips of a reproducibility crisis for a number of years. Abcam is leading the way in addressing this with our range of recombinant monoclonal antibodies and knockout edited cell lines for gold-standard validation. Please check that this product meets your needs before purchasing.

If you have any questions, special requirements or concerns, please send us an inquiry and/or contact our Support team ahead of purchase. Recommended alternatives for this product can be found below, along with publications, customer reviews and Q&As

性能

形式	Liquid
存放说明	Shipped at 4°C. Upon delivery aliquot and store at -20°C or -80°C. Avoid repeated freeze / thaw cycles.
存储溶液	pH: 7.2 Preservative: 0.02% Sodium azide
纯度	Immunogen affinity purified
克隆	多克隆
同种型	IgG

应用

The Abpromise guarantee **Abpromise™**承诺保证使用ab9655于以下的经测试应用

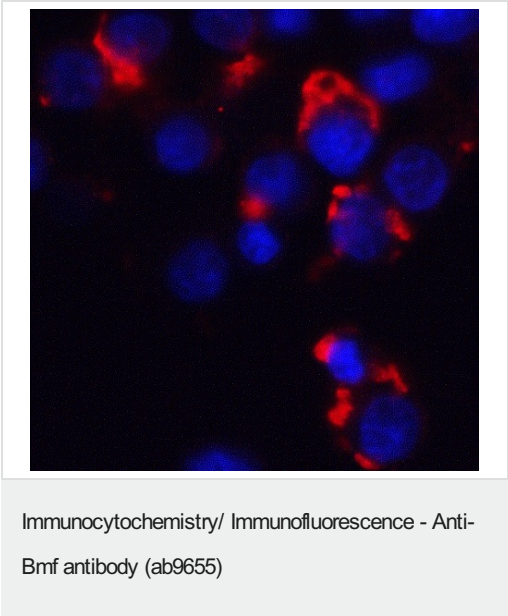
“应用说明”部分 下显示的仅为推荐的起始稀释度;实际最佳的稀释度/浓度应由使用者检定。

应用	Ab评论	说明
WB	★★★★★ (3)	Use a concentration of 2 µg/ml. Detects a band of approximately 25 kDa.
ICC/IF	★★★★★ (1)	Use a concentration of 10 µg/ml.
IHC-P		Use at an assay dependent concentration. PubMed: 14668207 Note: this was tested against sections embedded in polyester wax.

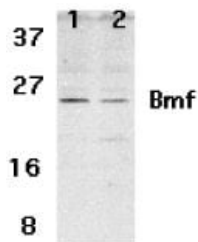
靶标

功能	May play a role in apoptosis. Isoform 1 seems to be the main initiator.
组织特异性	Isoform 1 is mainly expressed in B-lymphoid cells. Isoform 2 and isoform 3 are mainly expressed in B-CLL and normal B-cells.
序列相似性	Belongs to the Bcl-2 family.

图片



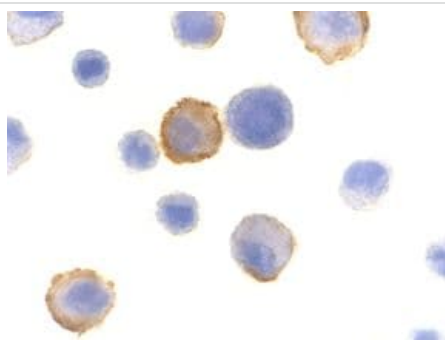
Immunocytochemistry/Immunofluorescence of HeLa cells labeling Bmf with Anti-Bmf antibody (ab9655) at 5µg/ml.



Western blot - Anti-Bmf antibody (ab9655)

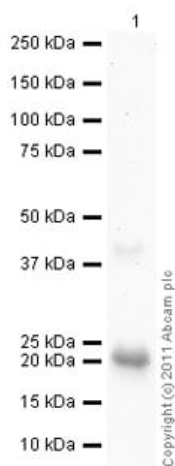
Western blot analysis of Bmf expression in human HepG2 (lane 1) and 293 (lane 2) cell lysates with anti-Bmf at 2 µg /ml.

Western blot analysis of Bmf expression in human HepG2 (lane 1) and 293 (lane 2) cell lysates with anti-Bmf at 2 µg /ml.



Immunocytochemistry/ Immunofluorescence - Anti-Bmf antibody (ab9655)

ab9655 at 10µg/ml staining Bmf in human Hela cells by Immunocytochemistry.



Western blot - Anti-Bmf antibody (ab9655)

Please note: All products are "FOR RESEARCH USE ONLY. NOT FOR USE IN DIAGNOSTIC PROCEDURES"

Our Abpromise to you: Quality guaranteed and expert technical support

- Replacement or refund for products not performing as stated on the datasheet
- Valid for 12 months from date of delivery
- Response to your inquiry within 24 hours
- We provide support in Chinese, English, French, German, Japanese and Spanish

- Extensive multi-media technical resources to help you
- We investigate all quality concerns to ensure our products perform to the highest standards

If the product does not perform as described on this datasheet, we will offer a refund or replacement. For full details of the Abpromise, please visit <https://www.abcam.cn/abpromise> or contact our technical team.

Terms and conditions

- Guarantee only valid for products bought direct from Abcam or one of our authorized distributors