

Anti-Blooms Syndrome Protein Blm antibody ab2179

★★★★★ 12 Abreviews 45 References 3 图像

概述

产品名称	Anti-Blooms Syndrome蛋白Blm抗体
描述	兔多克隆抗体to Blooms Syndrome蛋白Blm
宿主	Rabbit
经测试应用	适用于: WB, IP
种属反应性	与反应: Mouse, Human
免疫原	Synthetic peptide. This information is proprietary to Abcam and/or its suppliers.
阳性对照	WB: HEK-293T, K-562, TCMK-1, NIH/3T3 and Jurkat whole cell lysate. IP: Blooms Syndrome Protein Blm in HEK-293T whole cell lysate.
常规说明	<p>The Life Science industry has been in the grips of a reproducibility crisis for a number of years. Abcam is leading the way in addressing this with our range of recombinant monoclonal antibodies and knockout edited cell lines for gold-standard validation. Please check that this product meets your needs before purchasing.</p> <p>If you have any questions, special requirements or concerns, please send us an inquiry and/or contact our Support team ahead of purchase. Recommended alternatives for this product can be found below, along with publications, customer reviews and Q&amp;As</p>

性能

形式	Liquid
存放说明	Shipped at 4°C. Upon delivery aliquot and store at -20°C. Avoid freeze / thaw cycles.
存储溶液	pH: 7 Preservative: 0.1% Sodium azide
纯度	Immunogen affinity purified
克隆	多克隆
同种型	IgG

应用

The Abpromise guarantee      Abpromise™承诺保证使用ab2179于以下的经测试应用

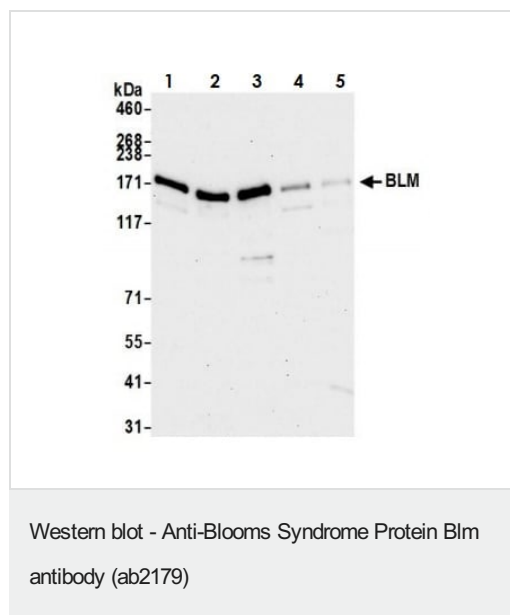
“应用说明”部分 下显示的仅为推荐的起始稀释度;实际最佳的稀释度/浓度应由使用者检定。

应用	Ab评论	说明
WB	★★★★★ (6)	1/2000 - 1/10000. Detects a band of approximately 170 kDa (predicted molecular weight: 159 kDa).
IP	★★★★★ (1)	Use at 2-10 µg/mg of lysate.

## 靶标

功能	Participates in DNA replication and repair. Exhibits a magnesium-dependent ATP-dependent DNA-helicase activity that unwinds single- and double-stranded DNA in a 3'-5' direction.
疾病相关	Defects in BLM are the cause of Bloom syndrome (BLM) [MIM:210900]. BLM is an autosomal recessive disorder characterized by proportionate pre- and postnatal growth deficiency, sun-sensitive telangiectatic hypo- and hyperpigmented skin, predisposition to malignancy, and chromosomal instability.
序列相似性	Belongs to the helicase family. RecQ subfamily. Contains 1 helicase ATP-binding domain. Contains 1 helicase C-terminal domain. Contains 1 HRDC domain.
翻译后修饰	Phosphorylated in response to DNA damage. Phosphorylation requires the FANCA-FANCC-FANCE-FANCF-FANCG protein complex, as well as the presence of RMI1.
细胞定位	Nucleus.

## 图片



**All lanes :** Anti-Blooms Syndrome Protein Blm antibody (ab2179) at 0.1 µg/ml

**Lane 1 :** HEK-293T (Human epithelial cell line from embryonic kidney transformed with large T antigen) whole cell lysate

**Lane 2 :** K-562 (Human chronic myelogenous leukemia lymphoblast cell line) whole cell lysate

**Lane 3 :** Jurkat (Human T cell leukemia cell line from peripheral blood) whole cell lysate

**Lane 4 :** HeLa (Human epithelial cell line from cervix adenocarcinoma) whole cell lysate

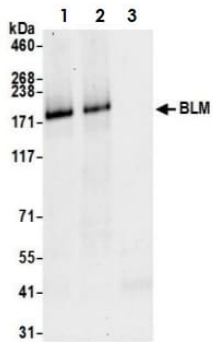
**Lane 5 :** A549 (Human lung carcinoma cell line) whole cell lysate

Lysates/proteins at 15 µg per lane.

**Predicted band size:** 159 kDa

**Exposure time:** 30 seconds

Lysates prepared using NETN lysis buffer.



Immunoprecipitation - Anti-Blooms Syndrome  
Protein BLM antibody (ab2179)

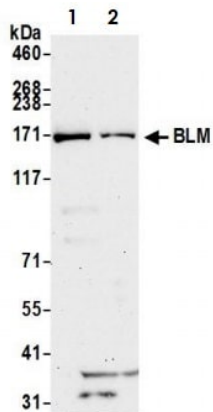
Samples: Whole cell lysate (1.0 mg per IP reaction; 20% of IP loaded) from HEK-293T cells prepared using NETN lysis buffer.

Antibodies: ab2179 used for IP at 6 µg per reaction.

Two lots tested (Lanes 1 and 2).

Lane 3 is Control IgG.

For blotting immunoprecipitated BLM, ab2179 was used at 0.1 µg/ml. Detection: Chemiluminescence with an exposure time of 10 seconds.



Western blot - Anti-Blooms Syndrome Protein BLM  
antibody (ab2179)

**All lanes :** Anti-Blooms Syndrome Protein BLM antibody (ab2179) at 0.1 µg/ml

**Lane 1 :** TCMK-1 (Mouse kidney epithelial cell line) whole cell lysate

**Lane 2 :** NIH/3T3 (Mouse embryonic fibroblast cell line) whole cell lysate

Lysates/proteins at 50 µg per lane.

**Predicted band size:** 159 kDa

**Exposure time:** 75 seconds

Lysates prepared using NETN lysis buffer.

**Please note:** All products are "FOR RESEARCH USE ONLY. NOT FOR USE IN DIAGNOSTIC PROCEDURES"

#### Our Abpromise to you: Quality guaranteed and expert technical support

- Replacement or refund for products not performing as stated on the datasheet
- Valid for 12 months from date of delivery

- Response to your inquiry within 24 hours
- We provide support in Chinese, English, French, German, Japanese and Spanish
- Extensive multi-media technical resources to help you
- We investigate all quality concerns to ensure our products perform to the highest standards

If the product does not perform as described on this datasheet, we will offer a refund or replacement. For full details of the Abpromise, please visit <https://www.abcam.cn/abpromise> or contact our technical team.

#### **Terms and conditions**

---

- Guarantee only valid for products bought direct from Abcam or one of our authorized distributors