

Anti-Blood Group Lewis b antibody [2-25LE] ab3968

★★★★★ [1 Abreviews](#) [17 References](#) [1 图像](#)

概述

产品名称	Anti-Blood Group Lewis b抗体[2-25LE]
描述	小鼠单克隆抗体[2-25LE] to Blood Group Lewis b
宿主	Mouse
经测试应用	适用于: WB, ELISA, Flow Cyt, ICC/IF, IHC-P
种属反应性	与反应: Human
免疫原	Full length native protein (purified) corresponding to Human Blood Group Lewis b. Mucin isolated by size exclusion chromatography from an ovarian cyst fluid (pure endocervical type according to the Fenoglio.s classification).
阳性对照	IHC: Human colon adenocarcinoma
常规说明	<p>The Life Science industry has been in the grips of a reproducibility crisis for a number of years. Abcam is leading the way in addressing this with our range of recombinant monoclonal antibodies and knockout edited cell lines for gold-standard validation. Please check that this product meets your needs before purchasing.</p> <p>If you have any questions, special requirements or concerns, please send us an inquiry and/or contact our Support team ahead of purchase. Recommended alternatives for this product can be found below, along with publications, customer reviews and Q&As</p>

性能

形式	Liquid
存放说明	Shipped at 4°C. Store at +4°C short term (1-2 weeks). Upon delivery aliquot. Store at -20°C or -80°C. Avoid freeze / thaw cycle.
存储溶液	pH: 7.40 Preservative: 0.097% Sodium azide Constituent: PBS
纯度	Protein A purified
纯化说明	Purified from hybridoma culture supernatant. Purity >95% by SDS-PAGE.
克隆	单克隆
克隆编号	2-25LE
骨髓瘤	unknown

同种型 IgG1
轻链类型 unknown

应用

The Abpromise guarantee **Abpromise™**承诺保证使用ab3968于以下的经测试应用

“应用说明”部分 下显示的仅为推荐的起始稀释度;实际最佳的稀释度/浓度应由使用者检定。

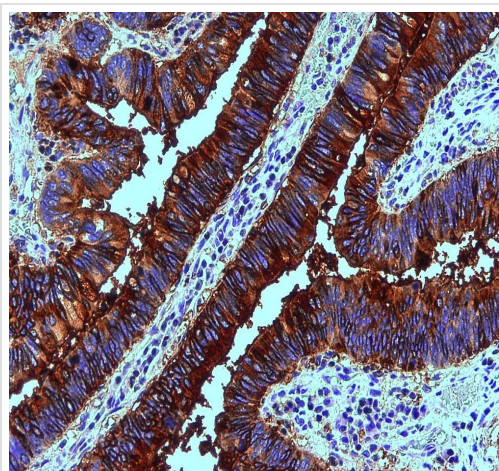
应用	Ab评论	说明
WB		Use at an assay dependent concentration.
ELISA		Use at an assay dependent concentration.
Flow Cyt		Use at an assay dependent concentration. PubMed: 23144050 ab170190 - Mouse monoclonal IgG1, is suitable for use as an isotype control with this antibody.
ICC/IF	★★★★★ (1)	Use at an assay dependent concentration. PubMed: 17202152
IHC-P		Use a concentration of 5 - 10 µg/ml.

靶标

相关性 Blood group Lewis b is a carbohydrate determinant carried on both glycolipids and glycoproteins, detected on erythrocytes, certain epithelial cells, and in secretions of certain individuals.

细胞定位 Plasma membrane - adsorbed onto the surface of erythrocytes.

图片



Immunohistochemistry (Formalin/PFA-fixed paraffin-embedded sections) analysis of human colon adenocarcinoma tissue labelling Blood Group Lewis b with ab3968 at 10 µg/mL.

Immunohistochemistry (Formalin/PFA-fixed paraffin-embedded sections) - Anti-Blood Group Lewis b antibody [2-25LE] (ab3968)

Please note: All products are "FOR RESEARCH USE ONLY. NOT FOR USE IN DIAGNOSTIC PROCEDURES"

Our Abpromise to you: Quality guaranteed and expert technical support

- Replacement or refund for products not performing as stated on the datasheet
- Valid for 12 months from date of delivery
- Response to your inquiry within 24 hours

- We provide support in Chinese, English, French, German, Japanese and Spanish
- Extensive multi-media technical resources to help you
- We investigate all quality concerns to ensure our products perform to the highest standards

If the product does not perform as described on this datasheet, we will offer a refund or replacement. For full details of the Abpromise, please visit <https://www.abcam.cn/abpromise> or contact our technical team.

Terms and conditions

- Guarantee only valid for products bought direct from Abcam or one of our authorized distributors