

Biotin Anti-VCAM1 antibody [M/K-2] ab24942

1 图像

概述

产品名称	生物素Anti-VCAM1抗体[M/K-2]
描述	生物素大鼠单克隆抗体[M/K-2] to VCAM1
宿主	Rat
偶联物	Biotin
经测试应用	适用于: Flow Cyt
种属反应性	与反应: Mouse
免疫原	Tissue, cells or virus corresponding to VCAM1. BALB/3T3 and +/-2.4 cells
阳性对照	Flow Cyt: BALB/c mouse bone marrow cells.
常规说明	<p>The Life Science industry has been in the grips of a reproducibility crisis for a number of years. Abcam is leading the way in addressing this with our range of recombinant monoclonal antibodies and knockout edited cell lines for gold-standard validation. Please check that this product meets your needs before purchasing.</p> <p>If you have any questions, special requirements or concerns, please send us an inquiry and/or contact our Support team ahead of purchase. Recommended alternatives for this product can be found below, along with publications, customer reviews and Q&As</p>

性能

形式	Liquid
存放说明	Shipped at 4°C. Store at +4°C short term (1-2 weeks). Upon delivery aliquot. Store at -20°C long term. Avoid freeze / thaw cycle. Store In the Dark.
存储溶液	pH: 7.4 Preservative: 0.1% Sodium azide Constituent: PBS
纯度	Affinity purified
克隆	单克隆
克隆编号	M/K-2
同种型	IgG1
轻链类型	kappa

应用

The Abpromise guarantee **Abpromise™** 承诺保证使用 ab24942 于以下的经测试应用

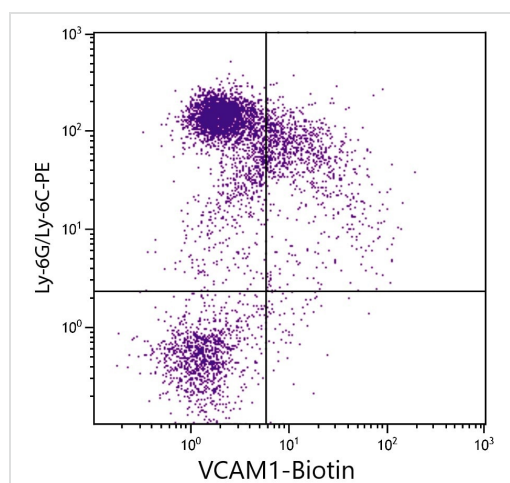
“应用说明”部分 下显示的仅为推荐的起始稀释度;实际最佳的稀释度/浓度应由使用者检定。

应用	Ab评论	说明
Flow Cyt		Use 1 µg for 10 ⁶ cells. ab18403 - Rat monoclonal IgG1, is suitable for use as an isotype control with this antibody.

靶标

功能	Important in cell-cell recognition. Appears to function in leukocyte-endothelial cell adhesion. Interacts with the beta-1 integrin VLA4 on leukocytes, and mediates both adhesion and signal transduction. The VCAM1/VLA4 interaction may play a pathophysiologic role both in immune responses and in leukocyte emigration to sites of inflammation.
组织特异性	Expressed on inflamed vascular endothelium, as well as on macrophage-like and dendritic cell types in both normal and inflamed tissue.
序列相似性	Contains 7 Ig-like C2-type (immunoglobulin-like) domains.
结构域	Either the first or the fourth Ig-like C2-type domain is required for VLA4-dependent cell adhesion.
翻译后修饰	Sialoglycoprotein.
细胞定位	Membrane.

图片



Flow Cytometry - Biotin Anti-VCAM1 antibody [M/K-2] (ab24942)

BALB/c mouse bone marrow cells were stained with Anti-VCAM1 antibody [M/K-2] (Biotin) (ab24942) and Rat Anti-Mouse Ly-6G/Ly-6C-PE followed by Streptavidin-FITC.

Please note: All products are "FOR RESEARCH USE ONLY. NOT FOR USE IN DIAGNOSTIC PROCEDURES"

Our Abpromise to you: Quality guaranteed and expert technical support

- Replacement or refund for products not performing as stated on the datasheet
- Valid for 12 months from date of delivery
- Response to your inquiry within 24 hours

- We provide support in Chinese, English, French, German, Japanese and Spanish
- Extensive multi-media technical resources to help you
- We investigate all quality concerns to ensure our products perform to the highest standards

If the product does not perform as described on this datasheet, we will offer a refund or replacement. For full details of the Abpromise, please visit <https://www.abcam.cn/abpromise> or contact our technical team.

Terms and conditions

- Guarantee only valid for products bought direct from Abcam or one of our authorized distributors