

Biotin Anti-PDGFR alpha antibody [APA5] ab93530

[2 References](#) [1 图像](#)

概述

产品名称	生物素Anti-PDGFR alpha抗体[APA5]
描述	生物素大鼠单克隆抗体[APA5] to PDGFR alpha
宿主	Rat
偶联物	Biotin
经测试应用	适用于: Flow Cyt
种属反应性	与反应: Mouse
免疫原	Recombinant fragment corresponding to Mouse PDGFR alpha. Extracellular domain of PDGFRa and the Fc portion of human IgG1
阳性对照	NIH/3T3 cell line
常规说明	<p>The Life Science industry has been in the grips of a reproducibility crisis for a number of years. Abcam is leading the way in addressing this with our range of recombinant monoclonal antibodies and knockout edited cell lines for gold-standard validation. Please check that this product meets your needs before purchasing.</p> <p>If you have any questions, special requirements or concerns, please send us an inquiry and/or contact our Support team ahead of purchase. Recommended alternatives for this product can be found below, along with publications, customer reviews and Q&As</p>

性能

形式	Liquid
存放说明	Shipped at 4°C. Store at +4°C short term (1-2 weeks). Store at -20°C or -80°C. Avoid freeze / thaw cycle.
存储溶液	pH: 7.20 Preservative: 0.09% Sodium azide Constituents: 0.87% Sodium chloride, PBS
纯度	Protein G purified
克隆	单克隆
克隆编号	APA5
同种型	IgG2a
轻链类型	kappa

应用

The Abpromise guarantee **Abpromise™**承诺保证使用ab93530于以下的经测试应用

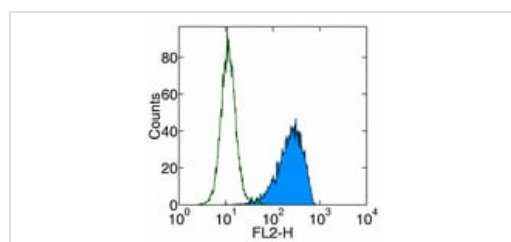
“应用说明”部分 下显示的仅为推荐的起始稀释度;实际最佳的稀释度/浓度应由使用者检定。

应用	Ab评论	说明
Flow Cyt		Use 0.5-1µg for 10 ⁵⁻⁸ cells. A final volume of 100 µl is recommended for staining the cell sample.

靶标

功能	Receptor that binds both PDGFA and PDGFB and has a tyrosine-protein kinase activity.
组织特异性	Expressed in primary and metastatic colon tumors and in normal colon tissue. Tumors may express a different isoform to that found in normal tissue.
疾病相关	Note=A chromosomal aberration involving PDGFRA is found in some cases of hypereosinophilic syndrome. Interstitial chromosomal deletion del(4)(q12q12) causes the fusion of FIP1L1 and PDGFRA (FIP1L1-PDGFR).
序列相似性	Belongs to the protein kinase superfamily. Tyr protein kinase family. CSF-1/PDGF receptor subfamily. Contains 5 Ig-like C2-type (immunoglobulin-like) domains. Contains 1 protein kinase domain.
细胞定位	Membrane.

图片



Flow Cytometry - Biotin Anti-PDGFR alpha antibody
[APA5] (ab93530)

Staining of NIH/3T3 cell line with 0.5 µg of ab93530 followed by Streptavidin PE. Appropriate isotype controls were used (open histogram). Total viable cells were used for analysis.

Please note: All products are "FOR RESEARCH USE ONLY. NOT FOR USE IN DIAGNOSTIC PROCEDURES"

Our Abpromise to you: Quality guaranteed and expert technical support

- Replacement or refund for products not performing as stated on the datasheet
- Valid for 12 months from date of delivery
- Response to your inquiry within 24 hours

- We provide support in Chinese, English, French, German, Japanese and Spanish
- Extensive multi-media technical resources to help you
- We investigate all quality concerns to ensure our products perform to the highest standards

If the product does not perform as described on this datasheet, we will offer a refund or replacement. For full details of the Abpromise, please visit <https://www.abcam.cn/abpromise> or contact our technical team.

Terms and conditions

- Guarantee only valid for products bought direct from Abcam or one of our authorized distributors