

Biotin Anti-Macrophage inflammatory protein 5 antibody ab83433

2 图像

概述

产品名称	生物素Anti-Macrophage inflammatory蛋白5抗体
描述	生物素山羊多克隆抗体to Macrophage inflammatory蛋白5
宿主	Goat
偶联物	Biotin
经测试应用	适用于: Sandwich ELISA, WB
种属反应性	与反应: Recombinant fragment
免疫原	Recombinant full length protein corresponding to Human Macrophage inflammatory protein 5 aa 22-113. Highly pure (>98%) Sequence: QFTNDAETEL MMSKLPLENP VVLNSFHFAA DCCTSYISQS IPCSLMKSYP ETSSECSKPG VIIFLTKKGRQ VCAKPSGPGV QDCMKKLPY SI

Database link: [Q16663](#)

 [Run BLAST with](#)

 [Run BLAST with](#)

常规说明

The Life Science industry has been in the grips of a reproducibility crisis for a number of years. Abcam is leading the way in addressing this with our range of recombinant monoclonal antibodies and knockout edited cell lines for gold-standard validation. Please check that this product meets your needs before purchasing.

If you have any questions, special requirements or concerns, please send us an inquiry and/or contact our Support team ahead of purchase. Recommended alternatives for this product can be found below, along with publications, customer reviews and Q&As

性能

形式	Lyophilized: Reconstitute in sterile PBS containing 0.1% BSA to a concentration of 0.1-1.0 mg/ml.
存放说明	Shipped at 4°C. Store at +4°C short term (1-2 weeks). Store at -20°C or -80°C. Avoid freeze / thaw cycle.
存储溶液	pH: 7.20 Constituent: PBS
纯度	IgG fraction

纯化说明	ab83433 is sterile filtered. This antibody was purified by affinity chromatography and then biotinylated.
克隆	多克隆
同种型	IgG

应用

The Abpromise guarantee **Abpromise™**承诺保证使用ab83433于以下的经测试应用

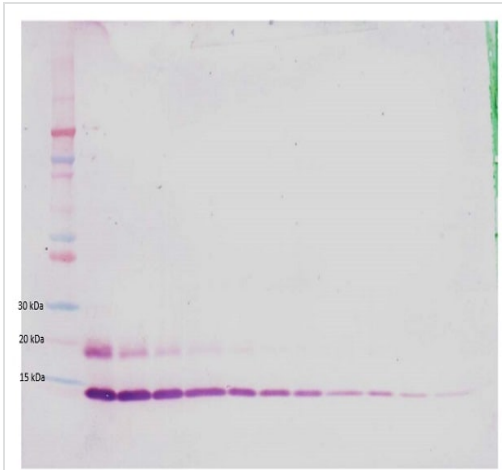
“应用说明”部分 下显示的仅为推荐的起始稀释度;实际最佳的稀释度/浓度应由使用者检定。

应用	Ab评论	说明
Sandwich ELISA		Use a concentration of 0.25 - 1 µg/ml. Allows the detection of at least 0.2 - 0.4 ng/well of recombinant human Macrophage inflammatory protein 5.
WB		Use a concentration of 0.1 - 0.2 µg/ml. Predicted molecular weight: 12 kDa. The detection limit for recombinant human Macrophage inflammatory protein 5 is 1.5 - 3.0 ng/lane, under either reducing or non-reducing conditions.

靶标

功能	Chemotactic factor that attracts T-cells and monocytes, but not neutrophils, eosinophils, or B-cells. Acts mainly via CC chemokine receptor CCR1. Also binds to CCR3. CCL15(22-92), CCL15(25-92) and CCL15(29-92) are more potent chemoattractants than the small-inducible cytokine A15.
组织特异性	Most abundant in heart, skeletal muscle and adrenal gland. Lower levels in placenta, liver, pancreas and bone marrow. CCL15(22-92), CCL15(25-92) and CCL15(29-92) are found in high levels in synovial fluids from rheumatoid patients.
序列相似性	Belongs to the intercrine beta (chemokine CC) family.
细胞定位	Secreted.

图片

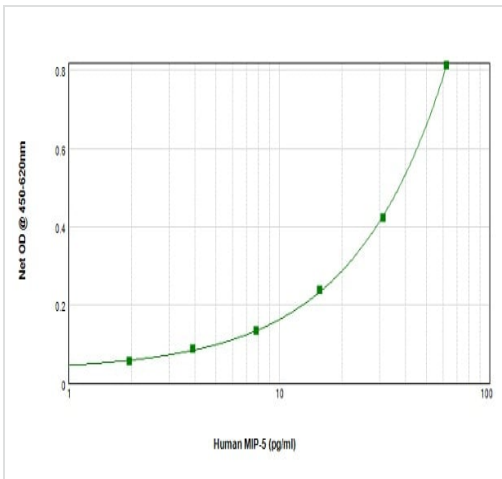


Western blot - Biotin Anti-Macrophage inflammatory protein 5 antibody (ab83433)

To detect human Macrophage inflammatory protein 5 by Western Blot analysis ab83433 can be used at a concentration of 0.1 - 0.2 µg/ml. Used in conjunction with compatible secondary reagents the detection limit for recombinant human Macrophage inflammatory protein 5 is 1.5 - 3.0 ng/lane, under either reducing or non-reducing conditions.

Image shown is non-reducing conditions; human recombinant Macrophage inflammatory protein 5 protein at 250 - 0.24 ng/ml.

Lane 1 is MW marker, lanes 2-12 human recombinant Macrophage inflammatory protein 5 protein.



Sandwich ELISA - Biotin Anti-Macrophage inflammatory protein 5 antibody (ab83433)

To detect human Macrophage inflammatory protein 5 by sandwich ELISA (using 100 µl/well antibody solution) a concentration of 0.25 – 1.0 µg/ml of ab83433 is required. This biotinylated polyclonal antibody, in conjunction with an appropriate anti-Macrophage inflammatory protein 5 as a capture antibody, allows the detection of at least 0.2 – 0.4 ng/well of recombinant human Macrophage inflammatory protein 5.

Please note: All products are "FOR RESEARCH USE ONLY. NOT FOR USE IN DIAGNOSTIC PROCEDURES"

Our Abpromise to you: Quality guaranteed and expert technical support

- Replacement or refund for products not performing as stated on the datasheet
- Valid for 12 months from date of delivery
- Response to your inquiry within 24 hours

- We provide support in Chinese, English, French, German, Japanese and Spanish
- Extensive multi-media technical resources to help you
- We investigate all quality concerns to ensure our products perform to the highest standards

If the product does not perform as described on this datasheet, we will offer a refund or replacement. For full details of the Abpromise, please visit <https://www.abcam.cn/abpromise> or contact our technical team.

Terms and conditions

- Guarantee only valid for products bought direct from Abcam or one of our authorized distributors