

Biotin Anti-Human Serum Albumin antibody [AL-01] ab81426

1 References [1 图像](#)

概述

产品名称	生物素抗人Serum Albumin抗体[AL-01]
描述	生物素小鼠单克隆抗体[AL-01] 到人Serum Albumin
宿主	Mouse
偶联物	Biotin
特异性	Reacts only with Human Serum Albumin. No cross-reactivity was observed with other serum proteins.
经测试应用	适用于: WB
种属反应性	与反应: Human 不与反应: Mammals
免疫原	Full length native protein (purified) corresponding to Human Human Serum Albumin. Fraction of proteins containing Albumin after ammonium sulphate precipitation and DEAE-chromatography of Human serum.
阳性对照	WB: Human plasma.
常规说明	<p>The Life Science industry has been in the grips of a reproducibility crisis for a number of years. Abcam is leading the way in addressing this with our range of recombinant monoclonal antibodies and knockout edited cell lines for gold-standard validation. Please check that this product meets your needs before purchasing.</p> <p>If you have any questions, special requirements or concerns, please send us an inquiry and/or contact our Support team ahead of purchase. Recommended alternatives for this product can be found below, along with publications, customer reviews and Q&As</p>

性能

形式	Liquid
存放说明	Shipped at 4°C. Store at +4°C short term (1-2 weeks). Store at -20°C or -80°C. Avoid freeze / thaw cycle.
存储溶液	pH: 7.40 Preservative: 0.097% Sodium azide Constituent: PBS
纯度	Size exclusion
克隆	单克隆

克隆编号	AL-01
同种型	IgG1

应用

The Abpromise guarantee Abpromise™承诺保证使用ab81426于以下的经测试应用

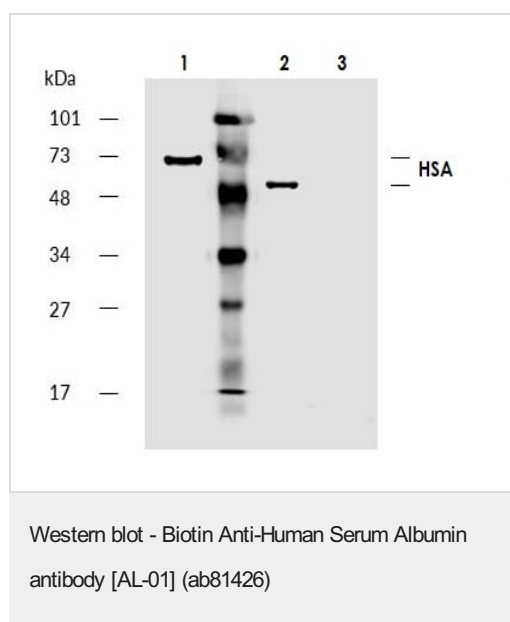
“应用说明”部分 下显示的仅为推荐的起始稀释度;实际最佳的稀释度/浓度应由使用者检定。

应用	Ab评论	说明
WB		Use a concentration of 2 - 5 µg/ml. Predicted molecular weight: 69 kDa.

靶标

功能	Serum albumin, the main protein of plasma, has a good binding capacity for water, Ca(2+), Na(+), K(+), fatty acids, hormones, bilirubin and drugs. Its main function is the regulation of the colloidal osmotic pressure of blood. Major zinc transporter in plasma, typically binds about 80% of all plasma zinc.
组织特异性	Plasma.
疾病相关	Defects in ALB are a cause of familial dysalbuminemic hyperthyroxinemia (FDH) [MIM:103600]. FDH is a form of euthyroid hyperthyroxinemia that is due to increased affinity of ALB for T(4). It is the most common cause of inherited euthyroid hyperthyroxinemia in Caucasian population.
序列相似性	Belongs to the ALB/AFP/VDB family. Contains 3 albumin domains.
翻译后修饰	Kenitra variant is partially O-glycosylated at Thr-620. It has two new disulfide bonds Cys-600 to Cys-602 and Cys-601 to Cys-606. Glycated in diabetic patients. Phosphorylation sites are present in the extracellular medium. Acetylated on Lys-223 by acetylsalicylic acid.
细胞定位	Secreted.

图片



All lanes : Biotin Anti-Human Serum Albumin antibody [AL-01] (ab81426) at 5 µg/ml

Lane 1 : Human plasma (non-reducing conditions)

Lane 2 : Human plasma (reducing conditions)

Lane 3 : HeLa (Human epithelial cell line from cervix adenocarcinoma) cell lysate (reducing conditions)

Secondary

All lanes : IRDye800-conjugated Streptavidin

Predicted band size: 69 kDa

The experiment was conducted under reducing and non-reducing conditions.

Negative control: HeLa cell lysate.

Please note: All products are "FOR RESEARCH USE ONLY. NOT FOR USE IN DIAGNOSTIC PROCEDURES"

Our Abpromise to you: Quality guaranteed and expert technical support

- Replacement or refund for products not performing as stated on the datasheet
- Valid for 12 months from date of delivery
- Response to your inquiry within 24 hours
- We provide support in Chinese, English, French, German, Japanese and Spanish
- Extensive multi-media technical resources to help you
- We investigate all quality concerns to ensure our products perform to the highest standards

If the product does not perform as described on this datasheet, we will offer a refund or replacement. For full details of the Abpromise, please visit <https://www.abcam.cn/abpromise> or contact our technical team.

Terms and conditions

- Guarantee only valid for products bought direct from Abcam or one of our authorized distributors