

Biotin Anti-Human Serum Albumin antibody ab24207

★★★★★ [1 Abreviews](#) [2 References](#) [1 图像](#)

概述

产品名称	生物素抗人Serum Albumin抗体
描述	生物素兔多克隆抗体到人Serum Albumin
宿主	Rabbit
偶联物	Biotin
经测试应用	适用于: ELISA, IHC-P, WB, ICC/IF
种属反应性	与反应: Human
免疫原	Full length protein corresponding to Human Human Serum Albumin.
常规说明	<p>The Life Science industry has been in the grips of a reproducibility crisis for a number of years. Abcam is leading the way in addressing this with our range of recombinant monoclonal antibodies and knockout edited cell lines for gold-standard validation. Please check that this product meets your needs before purchasing.</p> <p>If you have any questions, special requirements or concerns, please send us an inquiry and/or contact our Support team ahead of purchase. Recommended alternatives for this product can be found below, along with publications, customer reviews and Q&As</p>

性能

形式	Liquid
存放说明	Shipped at 4°C. Store at +4°C short term (1-2 weeks). Store at -20°C or -80°C. Avoid freeze / thaw cycle.
存储溶液	Preservative: 0.01% Sodium azide Constituents: 0.42% Potassium phosphate, 0.87% Sodium chloride, 1% Polyethylene glycol
纯度	Protein A purified
纯化说明	Purified from monospecific antiserum by Protein A Sepharose Fast Flow followed by POROS EP antigen resin affinity purification. The eluate was conjugated to biotin, re-purified, and then dialyzed against PBS with sodium azide prior to lyophilization.
克隆	多克隆
同种型	IgG

应用

The Abpromise guarantee

Abpromise™承诺保证使用ab24207于以下的经测试应用

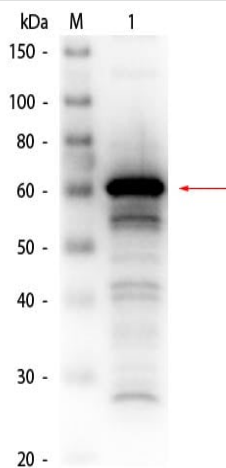
“应用说明”部分下显示的仅为推荐的起始稀释度;实际最佳的稀释度/浓度应由使用者检定。

应用	Ab评论	说明
ELISA	★★★★★ (1)	Use at an assay dependent concentration.
IHC-P		Use at an assay dependent concentration.
WB		1/1000 - 1/5000. Predicted molecular weight: 69 kDa.
ICC/IF		Use at an assay dependent concentration.

靶标

功能	Serum albumin, the main protein of plasma, has a good binding capacity for water, Ca(2+), Na(+), K(+), fatty acids, hormones, bilirubin and drugs. Its main function is the regulation of the colloidal osmotic pressure of blood. Major zinc transporter in plasma, typically binds about 80% of all plasma zinc.
组织特异性	Plasma.
疾病相关	Defects in ALB are a cause of familial dysalbuminemic hyperthyroxinemia (FDH) [MIM:103600]. FDH is a form of euthyroid hyperthyroxinemia that is due to increased affinity of ALB for T(4). It is the most common cause of inherited euthyroid hyperthyroxinemia in Caucasian population.
序列相似性	Belongs to the ALB/AFP/VDB family. Contains 3 albumin domains.
翻译后修饰	Kenitra variant is partially O-glycosylated at Thr-620. It has two new disulfide bonds Cys-600 to Cys-602 and Cys-601 to Cys-606. Glycated in diabetic patients. Phosphorylation sites are present in the extracellular medium. Acetylated on Lys-223 by acetylsalicylic acid.
细胞定位	Secreted.

图片



Western blot - Biotin Anti-Human Serum Albumin antibody (ab24207)

Biotin Anti-Human Serum Albumin antibody (ab24207) at 1/1000 dilution + Human Serum Albumin at 0.05 μ g

Secondary

HRP Streptavidin at 1/40000 dilution

Predicted band size: 69 kDa

Observed band size: 61 kDa

Please note: All products are "FOR RESEARCH USE ONLY. NOT FOR USE IN DIAGNOSTIC PROCEDURES"

Our Abpromise to you: Quality guaranteed and expert technical support

- Replacement or refund for products not performing as stated on the datasheet
- Valid for 12 months from date of delivery
- Response to your inquiry within 24 hours

- We provide support in Chinese, English, French, German, Japanese and Spanish
- Extensive multi-media technical resources to help you
- We investigate all quality concerns to ensure our products perform to the highest standards

If the product does not perform as described on this datasheet, we will offer a refund or replacement. For full details of the Abpromise, please visit <https://www.abcam.cn/abpromise> or contact our technical team.

Terms and conditions

- Guarantee only valid for products bought direct from Abcam or one of our authorized distributors