

Biotin Anti-HLA G antibody [MEM-G/1] ab26034

4 References [1 图像](#)

概述

| | |
|-------|---|
| 产品名称 | 生物素Anti-HLA G抗体[MEM-G/1] |
| 描述 | 生物素小鼠单克隆抗体[MEM-G/1] to HLA G |
| 宿主 | Mouse |
| 偶联物 | Biotin |
| 特异性 | ab26034 reacts with denaturated HLA-G heavy chain. |
| 经测试应用 | 适用于: WB |
| 种属反应性 | 与反应: Recombinant fragment |
| 免疫原 | Recombinant HLA-G denaturated heavy chain (Human) |
| 常规说明 | <p>The purified antibody is conjugated with Biotin-LC-NHS under optimum conditions. The reagent is free of unconjugated biotin.</p> <p>The Life Science industry has been in the grips of a reproducibility crisis for a number of years. Abcam is leading the way in addressing this with our range of recombinant monoclonal antibodies and knockout edited cell lines for gold-standard validation. Please check that this product meets your needs before purchasing.</p> <p>If you have any questions, special requirements or concerns, please send us an inquiry and/or contact our Support team ahead of purchase. Recommended alternatives for this product can be found below, along with publications, customer reviews and Q&As</p> |

性能

| | |
|------|---|
| 形式 | Liquid |
| 存放说明 | Shipped at 4°C. Store at +4°C short term (1-2 weeks). Store at -20°C or -80°C. Avoid freeze / thaw cycle. |
| 存储溶液 | <p>pH: 7.40</p> <p>Preservative: 0.097% Sodium azide</p> <p>Constituent: PBS</p> |
| 纯度 | Protein A purified |
| 克隆 | 单克隆 |
| 克隆编号 | MEM-G/1 |
| 同种型 | IgG1 |

应用

The Abpromise guarantee **Abpromise™**承诺保证使用ab26034于以下的经测试应用

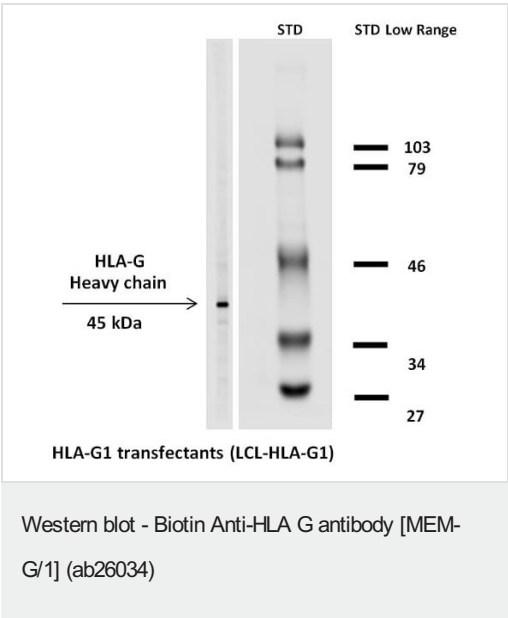
“应用说明”部分 下显示的仅为推荐的起始稀释度;实际最佳的稀释度/浓度应由使用者检定。

| 应用 | Ab评论 | 说明 |
|----|------|--|
| WB | | 1/100. Predicted molecular weight: 38 kDa. |

靶标

| | |
|-------|--|
| 功能 | Involved in the presentation of foreign antigens to the immune system. Plays a role in maternal tolerance of the fetus by mediating protection from the deleterious effects of natural killer cells, cytotoxic T lymphocytes, macrophages and mononuclear cells. |
| 组织特异性 | Expressed in trophoblasts. |
| 序列相似性 | Belongs to the MHC class I family. Contains 1 Ig-like C1-type (immunoglobulin-like) domain. |
| 细胞定位 | Membrane. |

图片



Western Blot of HLA-G1 transfectant cells labeling HLA G with Anti-HLA G antibody [MEM-G/1] (Biotin) (ab26034).

Please note: All products are "FOR RESEARCH USE ONLY. NOT FOR USE IN DIAGNOSTIC PROCEDURES"

Our Abpromise to you: Quality guaranteed and expert technical support

- Replacement or refund for products not performing as stated on the datasheet
- Valid for 12 months from date of delivery

- Response to your inquiry within 24 hours
- We provide support in Chinese, English, French, German, Japanese and Spanish
- Extensive multi-media technical resources to help you
- We investigate all quality concerns to ensure our products perform to the highest standards

If the product does not perform as described on this datasheet, we will offer a refund or replacement. For full details of the Abpromise, please visit <https://www.abcam.cn/abpromise> or contact our technical team.

Terms and conditions

- Guarantee only valid for products bought direct from Abcam or one of our authorized distributors