

Biotin Anti-FGF1 antibody ab83163

2 图像

概述

| | |
|-------|---|
| 产品名称 | 生物素Anti-FGF1抗体 |
| 描述 | 生物素兔多克隆抗体to FGF1 |
| 宿主 | Rabbit |
| 偶联物 | Biotin |
| 经测试应用 | 适用于: Sandwich ELISA, WB |
| 种属反应性 | 与反应: Recombinant fragment |
| 免疫原 | Highly pure (>98%) recombinant human FGF acidic |
| 常规说明 | <p>The Life Science industry has been in the grips of a reproducibility crisis for a number of years. Abcam is leading the way in addressing this with our range of recombinant monoclonal antibodies and knockout edited cell lines for gold-standard validation. Please check that this product meets your needs before purchasing.</p> <p>If you have any questions, special requirements or concerns, please send us an inquiry and/or contact our Support team ahead of purchase. Recommended alternatives for this product can be found below, along with publications, customer reviews and Q&As</p> |

性能

| | |
|------|--|
| 形式 | Lyophilized:Centrifuge vial prior to opening. Reconstitute in sterile PBS containing 0.1% BSA to a concentration of 0.1-1.0 mg/ml. |
| 存放说明 | Shipped at 4°C. Store at +4°C short term (1-2 weeks). Store at -20°C or -80°C. Avoid freeze / thaw cycle. |
| 存储溶液 | Constituent: PBS |
| 纯度 | Protein A purified |
| 纯化说明 | ab83163 is sterile filtered. |
| 克隆 | 多克隆 |
| 同种型 | IgG |

应用

The Abpromise guarantee

Abpromise™ 承诺保证使用ab83163于以下的经测试应用

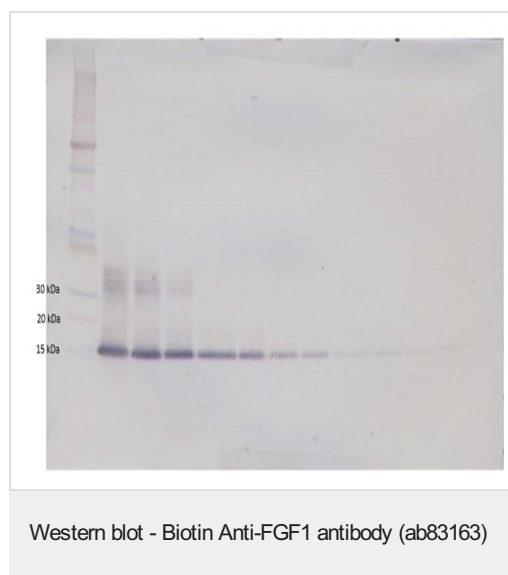
“应用说明”部分 下显示的仅为推荐的起始稀释度;实际最佳的稀释度/浓度应由使用者检定。

| 应用 | Ab评论 | 说明 |
|-----------------------|------|---|
| Sandwich ELISA | | Use a concentration of 0.25 - 1 µg/ml. Allows the detection of at least 0.2 - 0.4 ng/well of recombinant human FGF acidic. |
| WB | | Use a concentration of 0.1 - 0.2 µg/ml. Predicted molecular weight: 17 kDa. The detection limit for recombinant human FGF acidic is 1.5 - 3.0 ng/lane, under either reducing or non-reducing conditions. |

靶标

| | |
|--------------|--|
| 功能 | The heparin-binding fibroblast growth factors play important roles in the regulation of cell survival, cell division, angiogenesis, cell differentiation and cell migration. They are potent mitogens in vitro. |
| 序列相似性 | Belongs to the heparin-binding growth factors family. |
| 细胞定位 | Secreted. Cytoplasm. Cytoplasm > cell cortex. Lacks a cleavable signal sequence. Within the cytoplasm, it is transported to the cell membrane and then secreted by a non-classical pathway that requires Cu(2+) ions and S100A13. Secreted in a complex with SYT1. |

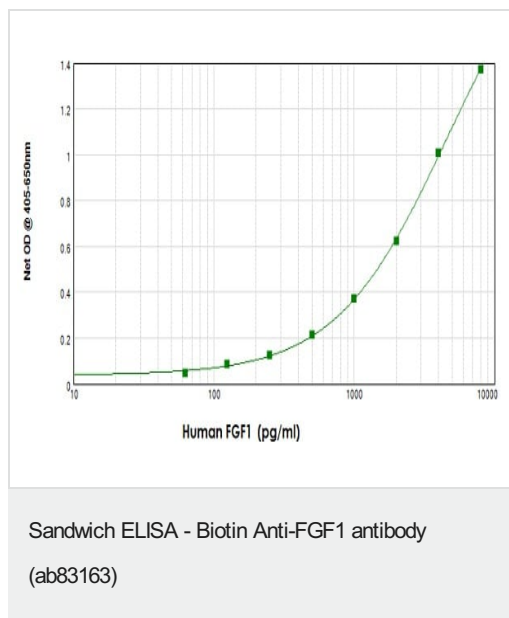
图片



To detect human FGF1 by Western Blot analysis ab83163 can be used at a concentration of 0.1 - 0.2 µg/ml. Used in conjunction with compatible secondary reagents the detection limit for recombinant human FGF1 is 1.5 - 3.0 ng/lane, under either reducing or non-reducing conditions.

Image shown is non-reducing conditions; Human recombinant FGF1 protein at 250 - 0.24 ng/ml.

Lane 1 is MW marker, lanes 2-12 human recombinant FGF1 protein.



To detect human FGF1 by sandwich ELISA (using 100 µl/well antibody solution) a concentration of 0.25 – 1.0 µg/ml of ab83163 is required. This biotinylated polyclonal antibody, in conjunction with an anti-FGF1 ([ab9588](#)) as a capture antibody, allows the detection of at least 0.2 – 0.4 ng/well of recombinant human FGF1.

Please note: All products are "FOR RESEARCH USE ONLY. NOT FOR USE IN DIAGNOSTIC PROCEDURES"

Our Abpromise to you: Quality guaranteed and expert technical support

- Replacement or refund for products not performing as stated on the datasheet
- Valid for 12 months from date of delivery
- Response to your inquiry within 24 hours
- We provide support in Chinese, English, French, German, Japanese and Spanish
- Extensive multi-media technical resources to help you
- We investigate all quality concerns to ensure our products perform to the highest standards

If the product does not perform as described on this datasheet, we will offer a refund or replacement. For full details of the Abpromise, please visit <https://www.abcam.cn/abpromise> or contact our technical team.

Terms and conditions

- Guarantee only valid for products bought direct from Abcam or one of our authorized distributors