



Biotin Anti-Fc epsilon RI/FCER1A antibody [CRA1] ab122882

4 References **1 图像**

概述

产品名称	生物素Anti-Fc epsilon RI/FCER1A抗体[CRA1]
描述	生物素小鼠单克隆抗体[CRA1] to Fc epsilon RI/FCER1A
宿主	Mouse
偶联物	Biotin
经测试应用	适用于: Flow Cyt
种属反应性	与反应: Human
免疫原	Recombinant fragment corresponding to Human Fc epsilon RI/FCER1A aa 1-100.  Run BLAST with ExPASy  Run BLAST with NCBI
表位	corresponds to Amino acids 1-84 of Human Fc epsilon RI/FCER1A
阳性对照	CHO/alpha beta gamma cells
常规说明	[biotin]/[IgG] = 8.9 The Life Science industry has been in the grips of a reproducibility crisis for a number of years. Abcam is leading the way in addressing this with our range of recombinant monoclonal antibodies and knockout edited cell lines for gold-standard validation. Please check that this product meets your needs before purchasing. If you have any questions, special requirements or concerns, please send us an inquiry and/or contact our Support team ahead of purchase. Recommended alternatives for this product can be found below, along with publications, customer reviews and Q&As

性能

形式	Liquid
存放说明	Shipped at 4°C. Store at +4°C short term (1-2 weeks). Store at -20°C or -80°C. Avoid freeze / thaw cycle.
存储溶液	pH: 6 Constituents: 49% PBS, 50% Glycerol (glycerin, glycerine)
纯度	Ion Exchange Chromatography
纯化说明	The IgG fraction was purified from serum free culture medium of mouse hybridoma (CRA1) by propriety chromatography under mild conditions. Filter sterilized.
克隆	单克隆

克隆编号	CRA1
同种型	IgG2b
轻链类型	kappa

应用

The Abpromise guarantee **Abpromise™**承诺保证使用ab122882于以下的经测试应用

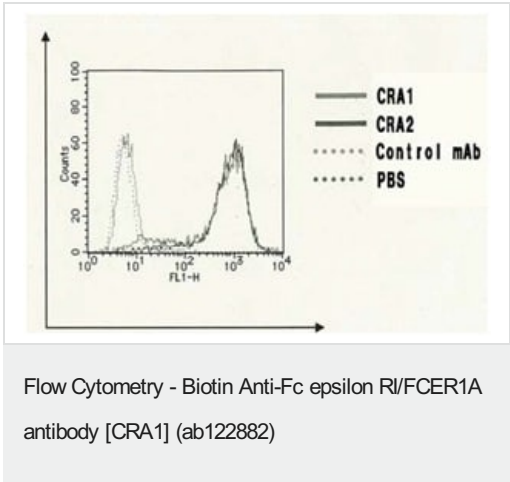
“应用说明”部分 下显示的仅为推荐的起始稀释度;实际最佳的稀释度/浓度应由使用者检定。

应用	Ab评论	说明
Flow Cyt		Use at an assay dependent concentration. ab18418 - Mouse monoclonal IgG2b, is suitable for use as an isotype control with this antibody.

靶标

功能	Binds to the Fc region of immunoglobulins epsilon. High affinity receptor. Responsible for initiating the allergic response. Binding of allergen to receptor-bound IgE leads to cell activation and the release of mediators (such as histamine) responsible for the manifestations of allergy. The same receptor also induces the secretion of important lymphokines.
序列相似性	Contains 2 Ig-like (immunoglobulin-like) domains.
细胞定位	Cell membrane.

图片



FACS analysis of CHO/alpha beta gamma cells (1x10⁵) with CRA1 and CRA2 antibodies by indirect-immunostaining, using FITC-labeled secondary antibody.

Please note: All products are "FOR RESEARCH USE ONLY. NOT FOR USE IN DIAGNOSTIC PROCEDURES"

Our Abpromise to you: Quality guaranteed and expert technical support

- Replacement or refund for products not performing as stated on the datasheet

- Valid for 12 months from date of delivery
- Response to your inquiry within 24 hours
- We provide support in Chinese, English, French, German, Japanese and Spanish
- Extensive multi-media technical resources to help you
- We investigate all quality concerns to ensure our products perform to the highest standards

If the product does not perform as described on this datasheet, we will offer a refund or replacement. For full details of the Abpromise, please visit <https://www.abcam.cn/abpromise> or contact our technical team.

Terms and conditions

- Guarantee only valid for products bought direct from Abcam or one of our authorized distributors