

# Biotin Anti-DMPO Nitron Adduct antibody [N1664A] ab110430

[1 References](#) [2 图像](#)

### 概述

产品名称	生物素Anti-DMPO Nitron Adduct抗体[N1664A]
描述	生物素小鼠单克隆抗体[N1664A] to DMPO Nitron Adduct
宿主	Mouse
偶联物	Biotin
特异性	Recognizes DMPO, DMPO-octanoic acid, DMPO-protein adducts and DMPO-DNA adducts. Does not cross-react with non-adducted proteins or DNA.
经测试应用	适用于: IP, ICC/IF, WB
种属反应性	与反应: Species independent
免疫原	Chemical/ Small Molecule corresponding to DMPO Nitron Adduct conjugated to ovalbumin. 5,5-dimethyl-2-(8-octanoic acid)-1-pyrrolone-N-oxide conjugated to Ovalbumin.
阳性对照	ICC/IF: RAW 264.7 cells.
常规说明	<p>The Life Science industry has been in the grips of a reproducibility crisis for a number of years. Abcam is leading the way in addressing this with our range of recombinant monoclonal antibodies and knockout edited cell lines for gold-standard validation. Please check that this product meets your needs before purchasing.</p> <p>If you have any questions, special requirements or concerns, please send us an inquiry and/or contact our Support team ahead of purchase. Recommended alternatives for this product can be found below, along with publications, customer reviews and Q&amp;As</p>

### 性能

形式	Liquid
存放说明	Shipped at 4°C. Store at +4°C short term (1-2 weeks). Upon delivery aliquot. Store at -20°C or -80°C. Avoid freeze / thaw cycle.
存储溶液	pH: 7.40 Preservative: 0.09% Sodium azide Constituents: PBS, 50% Glycerol
纯度	Protein G purified
克隆	单克隆
克隆编号	N1664A

同种型

IgG1

应用

The Abpromise guarantee

Abpromise™承诺保证使用ab110430于以下的经测试应用

“应用说明”部分 下显示的仅为推荐的起始稀释度;实际最佳的稀释度/浓度应由使用者检定。

应用	Ab评论	说明
IP		Use at an assay dependent concentration.
ICC/IF		Use at an assay dependent concentration.
WB		Use at an assay dependent concentration.

靶标

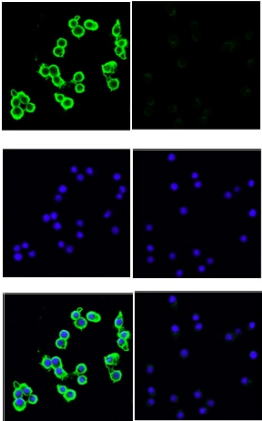
相关性

For measurement of protein radicals; some proteins with endogenous peroxidase activity are especially susceptible to forming DMPO adducts.

图片

plus DMPO

no DMPO

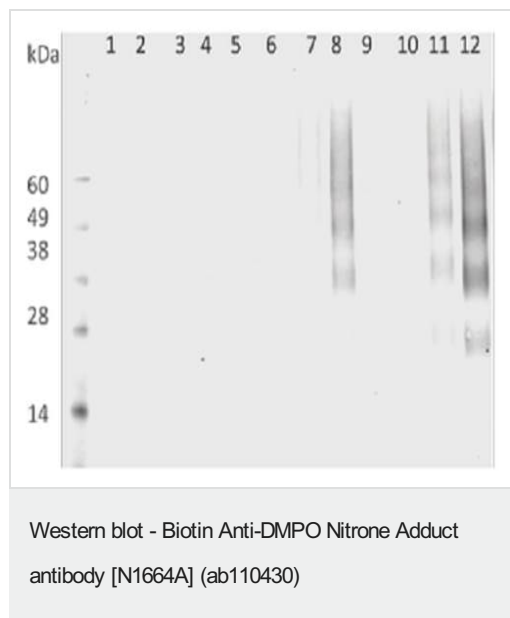


Immunocytochemistry/ Immunofluorescence - Biotin

Anti-DMPO Nitron Adduct antibody [N1664A]

(ab110430)

RAW 264.7 (Mouse macrophage cell line transformed with Abelson murine leukemia virus) cells stained for DMPO Nitron Adduct using the unconjugated version of ab110430 at a dilution of 1/100 in ICC/IF. Secondary used is an Alexa-Fluor®488-conjugated Goat Anti-Mouse IgG (Green). Counterstain: DAPI (Blue) nuclear stain.



**All lanes :** Unconjugated version of ab110430 at 1/200 dilution

**Lane 1 :** 10  $\mu$ m hemoglobin

**Lane 2 :** 10  $\mu$ m hemoglobin + 100  $\mu$ M HOCl

**Lane 3 :** 10  $\mu$ m hemoglobin + 500  $\mu$ M HOCl

**Lane 4 :** 10  $\mu$ m hemoglobin + 1000  $\mu$ M HOCl

**Lane 5 :** 10  $\mu$ m hemoglobin + 20 mM DMPO

**Lane 6 :** 10  $\mu$ m hemoglobin + 100  $\mu$ M HOCl + 20 mM DMPO

**Lane 7 :** 10  $\mu$ m hemoglobin + 500  $\mu$ M HOCl + 20 mM DMPO

**Lane 8 :** 10  $\mu$ m hemoglobin + 1000  $\mu$ M HOCl + 20 mM DMPO

**Lane 9 :** 10  $\mu$ m hemoglobin + 100 mM DMPO

**Lane 10 :** 10  $\mu$ m hemoglobin + 100  $\mu$ M HOCl + 100 mM DMPO

**Lane 11 :** 10  $\mu$ m hemoglobin + 500  $\mu$ M HOCl + 100 mM DMPO

**Lane 12 :** 10  $\mu$ m hemoglobin + 1000  $\mu$ M HOCl + 100 mM DMPO

**Please note:** All products are "FOR RESEARCH USE ONLY. NOT FOR USE IN DIAGNOSTIC PROCEDURES"

### Our Abpromise to you: Quality guaranteed and expert technical support

- Replacement or refund for products not performing as stated on the datasheet
- Valid for 12 months from date of delivery
- Response to your inquiry within 24 hours
- We provide support in Chinese, English, French, German, Japanese and Spanish
- Extensive multi-media technical resources to help you
- We investigate all quality concerns to ensure our products perform to the highest standards

If the product does not perform as described on this datasheet, we will offer a refund or replacement. For full details of the Abpromise, please visit <https://www.abcam.cn/abpromise> or contact our technical team.

### Terms and conditions

- Guarantee only valid for products bought direct from Abcam or one of our authorized distributors