


Biotin Anti-Cytokeratin 18 antibody [C-04] ab27553

★★★★★ [2 Abreviews](#) [4 References](#) [1 图像](#)

概述

产品名称	生物素Anti-Cytokeratin 18抗体[C-04]
描述	生物素小鼠单克隆抗体[C-04] to Cytokeratin 18
宿主	Mouse
偶联物	Biotin
经测试应用	适用于: WB
种属反应性	与反应: Human 预测可用于: Mammals 
免疫原	Tissue, cells or virus corresponding to Human Cytokeratin 18. Cytoskeleton preparation of epidermal carcinoma cell line A431
阳性对照	WB: HT-29 (reducing and non-reducing conditions) cell lysate.
常规说明	<p>The Life Science industry has been in the grips of a reproducibility crisis for a number of years. Abcam is leading the way in addressing this with our range of recombinant monoclonal antibodies and knockout edited cell lines for gold-standard validation. Please check that this product meets your needs before purchasing.</p> <p>If you have any questions, special requirements or concerns, please send us an inquiry and/or contact our Support team ahead of purchase. Recommended alternatives for this product can be found below, along with publications, customer reviews and Q&As</p>

性能

形式	Liquid
存放说明	Shipped at 4°C. Store at +4°C short term (1-2 weeks). Store at -20°C or -80°C. Avoid freeze / thaw cycle.
存储溶液	pH: 7.40 Preservative: 0.097% Sodium azide Constituent: PBS
纯度	Size exclusion
纯化说明	Purity >95% by SDS-PAGE.
克隆	单克隆
克隆编号	C-04

同种型IgG1

应用

The Abpromise guaranteeAbpromise™承诺保证使用ab27553于以下的经测试应用

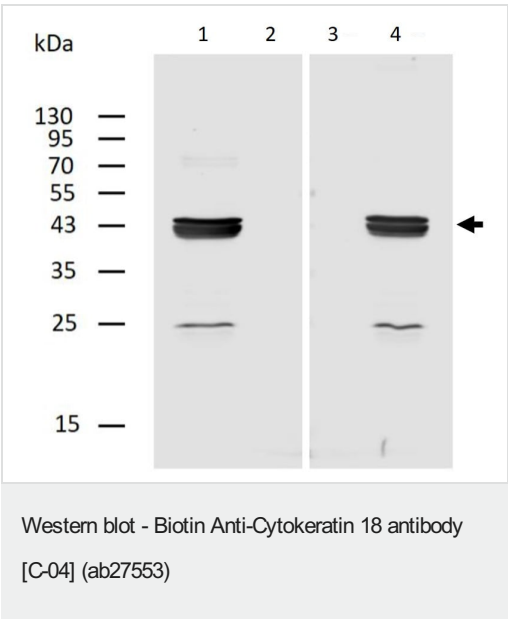
“应用说明”部分 下显示的仅为推荐的起始稀释度;实际最佳的稀释度/浓度应由使用者检定。

应用	Ab评论	说明
WB		1/500. Predicted molecular weight: 47 kDa.

靶标

功能	Involved in the uptake of thrombin-antithrombin complexes by hepatic cells (By similarity). When phosphorylated, plays a role in filament reorganization. Involved in the delivery of mutated CFTR to the plasma membrane. Together with KRT8, is involved in interleukin-6 (IL-6)-mediated barrier protection.
组织特异性	Expressed in colon, placenta, liver and very weakly in exocervix. Increased expression observed in lymph nodes of breast carcinoma.
疾病相关	Defects in KRT18 are a cause of cirrhosis (CIRRH) [MIM:215600].
序列相似性	Belongs to the intermediate filament family.
翻译后修饰	Phosphorylation at Ser-34 increases during mitosis. Hyperphosphorylated at Ser-53 in diseased cirrhosis liver. Phosphorylation increases by IL-6. Proteolytically cleaved by caspases during epithelial cell apoptosis. Cleavage occurs at Asp-238 by either caspase-3, caspase-6 or caspase-7. O-glycosylated at multiple sites; glycans consist of single N-acetylglucosamine residues.
细胞定位	Cytoplasm > perinuclear region.

图片



All lanes : Biotin Anti-Cytokeratin 18 antibody [C-04] (ab27553) at 2 µg/ml

- Lane 1 : HT-29 (Human colorectal adenocarcinoma cell line) whole cell lysate (reducing conditions)
- Lane 2 : MOLT-4 (Human lymphoblastic leukemia cell line) whole cell lysate (reducing conditions)
- Lane 3 : MOLT-4 (Human lymphoblastic leukemia cell line) whole cell lysate (non-reducing conditions)
- Lane 4 : HT-29 (Human colorectal adenocarcinoma cell line) whole cell lysate (non-reducing conditions)

SecondaryAll lanes : Conjugated Streptavidin

Predicted band size: 47 kDa

Observed band size: 46 kDa

Proteolytic fragment observed at approximately 25 kDa.

Please note: All products are "FOR RESEARCH USE ONLY. NOT FOR USE IN DIAGNOSTIC PROCEDURES"

Our Abpromise to you: Quality guaranteed and expert technical support

- Replacement or refund for products not performing as stated on the datasheet
- Valid for 12 months from date of delivery
- Response to your inquiry within 24 hours
- We provide support in Chinese, English, French, German, Japanese and Spanish
- Extensive multi-media technical resources to help you
- We investigate all quality concerns to ensure our products perform to the highest standards

If the product does not perform as described on this datasheet, we will offer a refund or replacement. For full details of the Abpromise, please visit <https://www.abcam.cn/abpromise> or contact our technical team.

Terms and conditions

- Guarantee only valid for products bought direct from Abcam or one of our authorized distributors