

Biotin Anti-CD103 antibody [2E7] ab25211

[1 References](#) [1 图像](#)

概述

产品名称	生物素Anti-CD103抗体[2E7]
描述	生物素亚美尼亚仓鼠单克隆抗体[2E7] to CD103
宿主	Armenian hamster
偶联物	Biotin
经测试应用	适用于: Flow Cyt
种属反应性	与反应: Mouse
免疫原	Tissue, cells or virus corresponding to CD103. C57BL/6J mouse intestinal intraepithelial lymphocytes (IEL)
常规说明	<p>The Life Science industry has been in the grips of a reproducibility crisis for a number of years. Abcam is leading the way in addressing this with our range of recombinant monoclonal antibodies and knockout edited cell lines for gold-standard validation. Please check that this product meets your needs before purchasing.</p> <p>If you have any questions, special requirements or concerns, please send us an inquiry and/or contact our Support team ahead of purchase. Recommended alternatives for this product can be found below, along with publications, customer reviews and Q&As</p>

性能

形式	Liquid
存放说明	Shipped at 4°C. Store at +4°C short term (1-2 weeks). Upon delivery aliquot. Store at -20°C long term. Avoid freeze / thaw cycle. Store In the Dark.
存储溶液	<p>pH: 7.4</p> <p>Preservative: 0.1% Sodium azide</p> <p>Constituent: PBS</p>
纯度	Affinity purified
克隆	单克隆
克隆编号	2E7
同种型	IgG

应用

The Abpromise guarantee

Abpromise™ 承诺保证使用ab25211于以下的经测试应用

“应用说明”部分 下显示的仅为推荐的起始稀释度;实际最佳的稀释度/浓度应由使用者检定。

应用	Ab评论	说明
Flow Cyt		

应用说明

Flow Cyt: Use at an assay dependent dilution. Use up to 1ug/10⁶ cells.

IHC-Fr: Use at an assay dependent dilution.

IP: Use at an assay dependent dilution.

In vivo activation: Use at an assay dependent dilution.

Not yet tested in other applications.

Optimal dilutions/concentrations should be determined by the end user.

靶标

功能

Integrin alpha-E/beta-7 is a receptor for E-cadherin. It mediates adhesion of intra-epithelial T-lymphocytes to epithelial cell monolayers.

组织特异性

Expressed on a subclass of T-lymphocytes known as intra-epithelial lymphocytes which are located between mucosal epithelial cells.

序列相似性

Belongs to the integrin alpha chain family.

Contains 7 FG-GAP repeats.

Contains 1 VWFA domain.

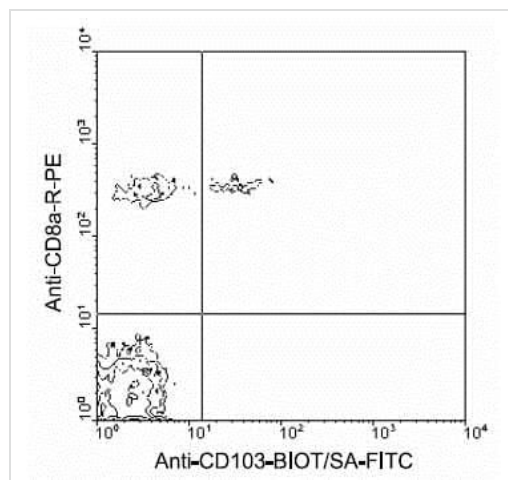
结构域

The integrin I-domain (insert) is a VWFA domain. Integrins with I-domains do not undergo protease cleavage.

细胞定位

Membrane.

图片



Flow Cytometry - Biotin Anti-CD103 antibody [2E7]

(ab25211)

BALB/c mesenteric lymph node cells were first labeled with ab25211 at 0.1 µg/10⁶ cells, and then double-stained with streptavidin-FITC and rat anti-mouse CD8a-R-PE ([ab25498](#)). Small lymphocytes were gated and analyzed on a FACScan flow cytometer (BDIS, San Jose, CA).

Please note: All products are "FOR RESEARCH USE ONLY. NOT FOR USE IN DIAGNOSTIC PROCEDURES"

Our Abpromise to you: Quality guaranteed and expert technical support

- Replacement or refund for products not performing as stated on the datasheet
- Valid for 12 months from date of delivery
- Response to your inquiry within 24 hours

- We provide support in Chinese, English, French, German, Japanese and Spanish
- Extensive multi-media technical resources to help you
- We investigate all quality concerns to ensure our products perform to the highest standards

If the product does not perform as described on this datasheet, we will offer a refund or replacement. For full details of the Abpromise, please visit <https://www.abcam.cn/abpromise> or contact our technical team.

Terms and conditions

- Guarantee only valid for products bought direct from Abcam or one of our authorized distributors