

Anti-BIN1 antibody ab27796

[2 References](#) [1 图像](#)

概述

产品名称	Anti-BIN1抗体
描述	兔多克隆抗体to BIN1
宿主	Rabbit
经测试应用	适用于: WB
种属反应性	与反应: Human
免疫原	Synthetic peptide corresponding to Mouse BIN1. Corresponding to region surrounding amino acid 578 Database link: O08539-1
阳性对照	Jurkat cells
常规说明	<p>This product is manufactured by BioVision, an Abcam company and was previously called 3672 Bin1 Antibody. 3672-100 is the same size as the 100 µg size of ab27796.</p> <p>The Life Science industry has been in the grips of a reproducibility crisis for a number of years. Abcam is leading the way in addressing this with our range of recombinant monoclonal antibodies and knockout edited cell lines for gold-standard validation. Please check that this product meets your needs before purchasing.</p> <p>If you have any questions, special requirements or concerns, please send us an inquiry and/or contact our Support team ahead of purchase. Recommended alternatives for this product can be found below, along with publications, customer reviews and Q&As</p>

性能

形式	Liquid
存放说明	Shipped at 4°C. Store at +4°C short term (1-2 weeks). Upon delivery aliquot. Store at -20°C long term.
存储溶液	Preservative: 0.02% Thimerosal (merthiolate) Constituents: PBS, 20% Glycerol (glycerin, glycerine), 0.1% BSA
纯度	Immunogen affinity purified
克隆	多克隆
同种型	IgG

应用

The Abpromise guarantee **Abpromise™**承诺保证使用ab27796于以下的经测试应用

“应用说明”部分 下显示的仅为推荐的起始稀释度;实际最佳的稀释度/浓度应由使用者检定。

应用	Ab评论	说明
WB		

应用说明

WB: Use at a concentration of 0.5 - 2.0 µg/ml. Predicted molecular weight: 65 kDa and a 45kDa fragment can be detected in apoptotic samples.

Not yet tested in other applications.

Optimal dilutions/concentrations should be determined by the end user.

靶标

功能

May be involved in regulation of synaptic vesicle endocytosis. May act as a tumor suppressor and inhibits malignant cell transformation.

组织特异性

Ubiquitous. Highest expression in the brain and muscle. Isoform IIA is expressed only in the brain where it is concentrated in axon initial segments and nodes of Ranvier. Isoform BIN1 is widely expressed with highest expression in skeletal muscle.

疾病相关

Defects in BIN1 are the cause of centronuclear myopathy autosomal recessive (ARCNM) [MIM:255200]; also known as autosomal recessive myotubular myopathy. Centronuclear myopathies are congenital muscle disorders characterized by progressive muscular weakness and wasting involving mainly limb girdle, trunk, and neck muscles. It may also affect distal muscles. Weakness may be present during childhood or adolescence or may not become evident until the third decade of life. Ptosis is a frequent clinical feature. The most prominent histopathologic features include high frequency of centrally located nuclei in muscle fibers not secondary to regeneration, radial arrangement of sarcoplasmic strands around the central nuclei, and predominance and hypotrophy of type 1 fibers.

序列相似性

Contains 1 BAR domain.

Contains 1 SH3 domain.

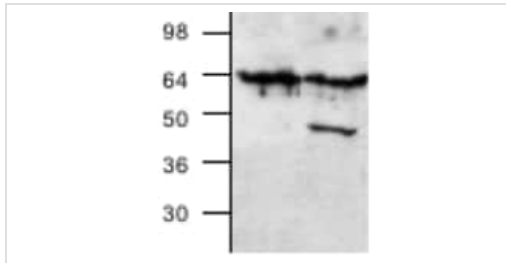
翻译后修饰

Phosphorylated by protein kinase C.

细胞定位

Cytoplasm and Nucleus.

图片



Western blot - Anti-BIN1 antibody (ab27796)

All lanes : Anti-BIN1 antibody (ab27796) at 2 µg/ml

Lane 1 : Jurkat whole cell lysate (**ab7899**)

Lane 2 : Jurkat cells treated with camptothecin for 6 hours

Predicted band size: 65 kDa

Observed band size: 64 kDa

Additional bands at: 48 kDa (possible cleavage fragment)

Please note: All products are "FOR RESEARCH USE ONLY. NOT FOR USE IN DIAGNOSTIC PROCEDURES"

Our Abpromise to you: Quality guaranteed and expert technical support

- Replacement or refund for products not performing as stated on the datasheet
- Valid for 12 months from date of delivery
- Response to your inquiry within 24 hours
- We provide support in Chinese, English, French, German, Japanese and Spanish
- Extensive multi-media technical resources to help you
- We investigate all quality concerns to ensure our products perform to the highest standards

If the product does not perform as described on this datasheet, we will offer a refund or replacement. For full details of the Abpromise, please visit <https://www.abcam.cn/abpromise> or contact our technical team.

Terms and conditions

- Guarantee only valid for products bought direct from Abcam or one of our authorized distributors