

Anti-Bid antibody ab62469

★★★★★ 2 Abreviews 6 References 4 图像

概述

产品名称	Anti-Bid抗体
描述	兔多克隆抗体to Bid
宿主	Rabbit
经测试应用	适用于: ICC/IF, WB, IHC-P
种属反应性	与反应: Mouse
免疫原	A 14 amino acid synthetic peptide from near the carboxy-terminus of human Bid
阳性对照	Mouse lung cell lysates and mouse lung tissue
常规说明	<p>The Life Science industry has been in the grips of a reproducibility crisis for a number of years. Abcam is leading the way in addressing this with our range of recombinant monoclonal antibodies and knockout edited cell lines for gold-standard validation. Please check that this product meets your needs before purchasing.</p> <p>If you have any questions, special requirements or concerns, please send us an inquiry and/or contact our Support team ahead of purchase. Recommended alternatives for this product can be found below, along with publications, customer reviews and Q&amp;As</p>

性能

形式	Liquid
存放说明	Shipped at 4°C. Store at +4°C.
存储溶液	pH: 7.2 Preservative: 0.02% Sodium azide Constituent: PBS
纯度	Ion Exchange Chromatography
克隆	多克隆
同种型	IgG

应用

The Abpromise guarantee      Abpromise™承诺保证使用ab62469于以下的经测试应用

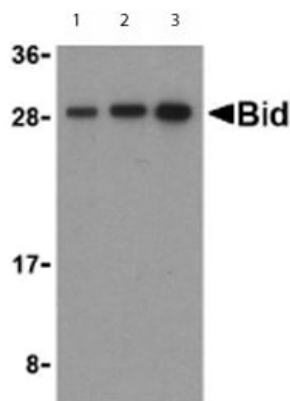
“应用说明”部分 下显示的仅为推荐的起始稀释度;实际最佳的稀释度/浓度应由使用者检定。

应用	Ab评论	说明
ICC/IF		Use a concentration of 20 µg/ml.
WB	★★★★★ (2)	Use a concentration of 0.5 - 1 µg/ml. Detects a band of approximately 28 kDa (predicted molecular weight: 22 kDa).
IHC-P		Use a concentration of 2 µg/ml.

## 靶标

功能	The major proteolytic product p15 BID allows the release of cytochrome c (By similarity). Isoform 1, isoform 2 and isoform 4 induce ICE-like proteases and apoptosis. Isoform 3 does not induce apoptosis. Counters the protective effect of Bcl-2.
组织特异性	Isoform 2 and isoform 3 are expressed in spleen, bone marrow, cerebral and cerebellar cortex. Isoform 2 is expressed in spleen, pancreas and placenta (at protein level). Isoform 3 is expressed in lung, pancreas and spleen (at protein level). Isoform 4 is expressed in lung and pancreas (at protein level).
结构域	Intact BH3 motif is required by BIK, BID, BAK, BAD and BAX for their pro-apoptotic activity and for their interaction with anti-apoptotic members of the Bcl-2 family.
翻译后修饰	TNF-alpha induces a caspase-mediated cleavage of p22 BID into a major p15 and minor p13 and p11 products. Phosphorylated upon DNA damage, probably by ATM or ATR. p15 BID is ubiquitinated by ITCH; ubiquitination results in proteasome-dependent degradation.
细胞定位	Cytoplasm; Cytoplasm. Mitochondrion membrane. When uncleaved, it is predominantly cytoplasmic; Mitochondrion membrane. A significant proportion of isoform 2 localizes to mitochondria, it may be cleaved constitutively; Mitochondrion membrane. Associated with the mitochondrial membrane and Mitochondrion membrane. Translocates to mitochondria as an integral membrane protein.

## 图片



Western blot - Anti-Bid antibody - Carboxyterminal end (ab62469)

**Lane 1 :** Anti-Bid antibody (ab62469) at 0.5 µg/ml

**Lane 2 :** Anti-Bid antibody (ab62469) at 1 µg/ml

**Lane 3 :** Anti-Bid antibody (ab62469) at 2 µg/ml

**All lanes :** Mouse lung cell lysates

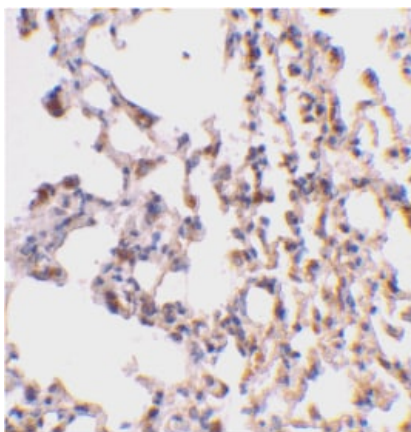
Lysates/proteins at 15 µg per lane.

**Secondary**

**All lanes :** Anti rabbit IgG secondary antibody

**Predicted band size:** 22 kDa

**Observed band size:** 28 kDa

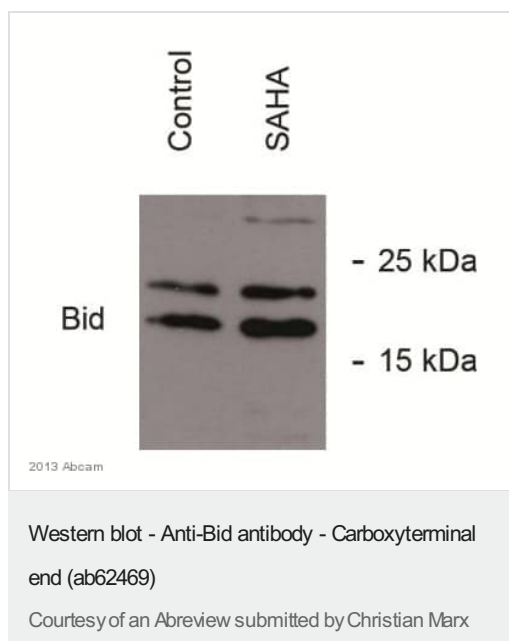


Immunohistochemistry (Formalin/PFA-fixed paraffin-embedded sections) - Anti-Bid antibody - Carboxyterminal end (ab62469)

Immunohistochemical staining of mouse lung tissue using ab62469 antibody at 2 µg/ml.

Immunocytochemistry/ Immunofluorescence - Anti-Bid antibody - Carboxyterminal end (ab62469)

Immunofluorescence of Bid in Mouse Lung cells using ab62469 at 10 µg/ml.



**All lanes :** Anti-Bid antibody (ab62469) at 1/1000 dilution

**Lane 1 :** HCT116 colon cancer cell line treated with DMSO (control)

**Lane 2 :** HCT116 colon cancer cell line treated with 2  $\mu$ M SAHA for 24 hrs

Lysates/proteins at 30  $\mu$ g per lane.

#### Secondary

**All lanes :** Goat Anti-Rabbit IgG H&L (HRP) ([ab97051](#)) at 1/10000 dilution

Developed using the ECL technique.

Performed under reducing conditions.

**Predicted band size:** 22 kDa

**Exposure time:** 10 seconds

**Please note:** All products are "FOR RESEARCH USE ONLY. NOT FOR USE IN DIAGNOSTIC PROCEDURES"

#### Our Abpromise to you: Quality guaranteed and expert technical support

- Replacement or refund for products not performing as stated on the datasheet
- Valid for 12 months from date of delivery
- Response to your inquiry within 24 hours
- We provide support in Chinese, English, French, German, Japanese and Spanish
- Extensive multi-media technical resources to help you
- We investigate all quality concerns to ensure our products perform to the highest standards

If the product does not perform as described on this datasheet, we will offer a refund or replacement. For full details of the Abpromise,

please visit <https://www.abcam.cn/abpromise> or contact our technical team.

## Terms and conditions

---

- Guarantee only valid for products bought direct from Abcam or one of our authorized distributors