

Anti-BFSP2 antibody ab122476

2 图像

概述

产品名称	Anti-BFSP2抗体
描述	兔多克隆抗体to BFSP2
宿主	Rabbit
经测试应用	适用于: IHC-P, ICC/IF
种属反应性	与反应: Human
免疫原	antigen sequence: LSRNYEEDVK LLHKQLAGCE LEQMDAPIGT GLDDILETIR IQWERDVEKN RVEAGALLQA KQQA EVAHMS QTQEEKLAAA LRVE, corresponding to internal sequence amino acids 237-320 of Human BFSP2. Run BLAST with Expasy Run BLAST with NCBI
阳性对照	Human lateral ventricle tissue; A 431 cells.
常规说明	<p>The Life Science industry has been in the grips of a reproducibility crisis for a number of years. Abcam is leading the way in addressing this with our range of recombinant monoclonal antibodies and knockout edited cell lines for gold-standard validation. Please check that this product meets your needs before purchasing.</p> <p>If you have any questions, special requirements or concerns, please send us an inquiry and/or contact our Support team ahead of purchase. Recommended alternatives for this product can be found below, along with publications, customer reviews and Q&As</p>

性能

形式	Liquid
存放说明	Shipped at 4°C. Upon delivery aliquot and store at -20°C. Avoid freeze / thaw cycles.
存储溶液	pH: 7.20 Preservative: 0.02% Sodium azide Constituents: 59% PBS, 40% Glycerol (glycerin, glycerine)
纯度	Immunogen affinity purified
克隆	多克隆
同种型	IgG

应用

The Abpromise guarantee

Abpromise™ 承诺保证使用 ab122476 于以下的经测试应用

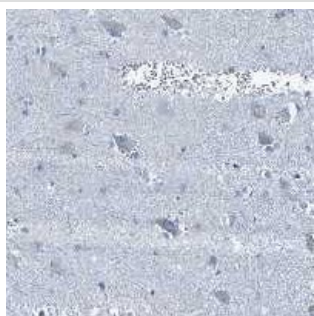
“应用说明”部分 下显示的仅为推荐的起始稀释度;实际最佳的稀释度/浓度应由使用者检定。

应用	Ab评论	说明
IHC-P		1/2500 - 1/5000. Perform heat mediated antigen retrieval with citrate buffer pH 6 before commencing with IHC staining protocol.
ICC/IF		Use a concentration of 1 - 4 µg/ml. using PFA/Triton X-100 Fixation/Permeabilization.

靶标

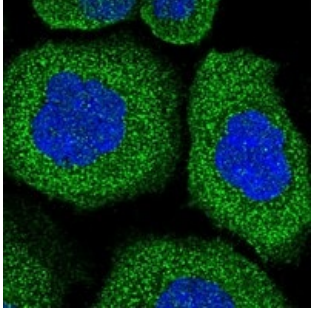
功能	Involved in stabilization of lens fiber cell cytoskeleton.
组织特异性	Lens.
疾病相关	Defects in BFSP2 are the cause of cataract autosomal dominant BFSP2-related (ADC-BFSP2) [MIM:611597]; also known as cataract autosomal dominant multiple types 1. Cataract is an opacification of the crystalline lens of the eye that frequently results in visual impairment or blindness. Opacities vary in morphology, are often confined to a portion of the lens, and may be static or progressive. In general, the more posteriorly located and dense an opacity, the greater the impact on visual function. Cataract autosomal dominant BFSP2-related is characterized by a variable phenotype that may or may not be consistent within a family. The opacities can be nuclear, sutural, stellate cortical, lamellar, cortical, nuclear embryonic, Y-sutural, punctate cortical, congenital or with juvenile- and adult-onset.
序列相似性	Belongs to the intermediate filament family.
细胞定位	Membrane. Cytoplasm. Cytoplasm > cytoskeleton. Membrane- and cytoskeleton-associated.

图片



ab122476 staining BFSP2 in paraffin-embedded Human lateral ventricle tissue by Immunohistochemistry.

Immunohistochemistry (Formalin/PFA-fixed paraffin-embedded sections) - Anti-BFSP2 antibody (ab122476)



ab122476 at 4 µg/ml staining BFSP2 in PFA/Triton X-100 fixed/permeabilized A431 cells by Immunofluorescence (green).

Immunocytochemistry/ Immunofluorescence - Anti-BFSP2 antibody (ab122476)

Please note: All products are "FOR RESEARCH USE ONLY. NOT FOR USE IN DIAGNOSTIC PROCEDURES"

Our Abpromise to you: Quality guaranteed and expert technical support

- Replacement or refund for products not performing as stated on the datasheet
- Valid for 12 months from date of delivery
- Response to your inquiry within 24 hours
- We provide support in Chinese, English, French, German, Japanese and Spanish
- Extensive multi-media technical resources to help you
- We investigate all quality concerns to ensure our products perform to the highest standards

If the product does not perform as described on this datasheet, we will offer a refund or replacement. For full details of the Abpromise, please visit <https://www.abcam.cn/abpromise> or contact our technical team.

Terms and conditions

- Guarantee only valid for products bought direct from Abcam or one of our authorized distributors