

# Anti-BFL-1/GRS antibody ab45413

[1 Abreviews](#) [9 References](#) [3 图像](#)

## 概述

产品名称	Anti-BFL-1/GRS抗体
描述	兔多克隆抗体to BFL-1/GRS
宿主	Rabbit
特异性	This antibody is specific for Bcl2A1 / GRS.
经测试应用	<b>适用于:</b> IHC-P, WB, ICC
种属反应性	<b>与反应:</b> Mouse, Human
免疫原	Synthetic peptide corresponding to Human BFL-1/GRS (C terminal).
阳性对照	WB: Human lung and kidney tissue. IHC: Mouse kidney tissue. ICC: Mouse kidney cells.
常规说明	<p>The Life Science industry has been in the grips of a reproducibility crisis for a number of years. Abcam is leading the way in addressing this with our range of recombinant monoclonal antibodies and knockout edited cell lines for gold-standard validation. Please check that this product meets your needs before purchasing.</p> <p>If you have any questions, special requirements or concerns, please send us an inquiry and/or contact our Support team ahead of purchase. Recommended alternatives for this product can be found below, along with publications, customer reviews and Q&amp;As</p>

## 性能

形式	Liquid
存放说明	Shipped at 4°C. Store at +4°C.
存储溶液	pH: 7.2 Preservative: 0.02% Sodium azide Constituent: PBS
纯度	Immunogen affinity purified
克隆	多克隆
同种型	IgG

## 应用

**Abpromise™** 承诺保证使用ab45413于以下的经测试应用

## The Abpromise guarantee

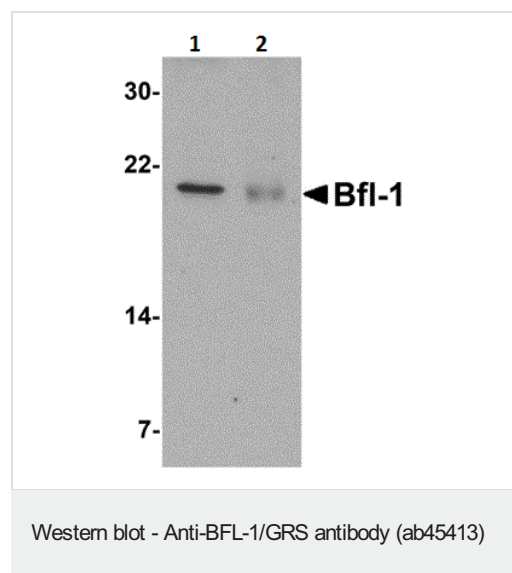
“应用说明”部分 下显示的仅为推荐的起始稀释度;实际最佳的稀释度/浓度应由使用者检定。

应用	Ab评论	说明
IHC-P		Use a concentration of 10 - 20 µg/ml. <b>IHC-P suitable for Mouse samples only</b>
WB		Use a concentration of 0.5 - 1 µg/ml. Predicted molecular weight: 20 kDa. <b>WB suitable for Human samples only</b>
ICC		Use a concentration of 20 µg/ml. <b>ICC suitable for Mouse samples only</b>

## 靶标

功能	Retards apoptosis induced by IL-3 deprivation. May function in the response of hemopoietic cells to external signals and in maintaining endothelial survival during infection.
组织特异性	Seems to be restricted to the hematopoietic compartment. Expressed in peripheral blood, spleen, and bone marrow, at moderate levels in lung, small intestine and testis, at a minimal levels in other tissues. Also found in vascular smooth muscle cells and hematopoietic malignancies.
序列相似性	Belongs to the Bcl-2 family.
细胞定位	Cytoplasm.

## 图片

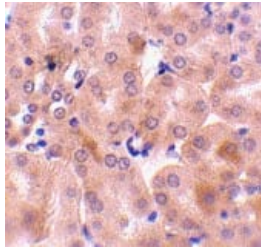


**All lanes :** Anti-BFL-1/GRS antibody (ab45413) at 1 µg/ml

**Lane 1 :** Human kidney tissue lysate

**Lane 2 :** Human lung tissue lysate

**Predicted band size:** 20 kDa



ab45413 at 10µg/ml staining BFL-1/GRS in mouse kidney tissue by IHC

Immunohistochemistry (Formalin/PFA-fixed paraffin-embedded sections) - Anti-BFL-1/GRS antibody (ab45413)

Immunocytochemistry - Anti-BFL-1/GRS antibody (ab45413)

Immunocytochemistry of BFL-1/GRS in Mouse Kidney cells using ab45413 at 20 ug/ml.

**Please note:** All products are "FOR RESEARCH USE ONLY. NOT FOR USE IN DIAGNOSTIC PROCEDURES"

### Our Abpromise to you: Quality guaranteed and expert technical support

---

- Replacement or refund for products not performing as stated on the datasheet
- Valid for 12 months from date of delivery
- Response to your inquiry within 24 hours
- We provide support in Chinese, English, French, German, Japanese and Spanish
- Extensive multi-media technical resources to help you
- We investigate all quality concerns to ensure our products perform to the highest standards

If the product does not perform as described on this datasheet, we will offer a refund or replacement. For full details of the Abpromise, please visit <https://www.abcam.cn/abpromise> or contact our technical team.

### Terms and conditions

---

- Guarantee only valid for products bought direct from Abcam or one of our authorized distributors