


# Anti-beta Tubulin antibody ab15568

★★★★★ [6 Abreviews](#) [85 References](#) [5 图像](#)

### 概述

产品名称	Anti-beta Tubulin抗体
描述	兔多克隆抗体to beta Tubulin
宿主	Rabbit
特异性	Homology with Tubulin beta chain and Tubulin beta-3 chain
经测试应用	<b>适用于:</b> ICC/IF, IHC-P, WB
种属反应性	<b>与反应:</b> Human <b>预测可用于:</b> Mouse, Rat, Chicken, Guinea pig, Cow, Dog, Pig, Saccharomyces cerevisiae, Xenopus laevis, Chimpanzee, Sea urchin, Fungi, Rice, Xenopus tropicalis 
免疫原	Synthetic peptide within Human beta Tubulin aa 400 to the C-terminus. The exact sequence is proprietary. Database link: <a href="#">Q13509</a>
常规说明	<p><b>This product is FOR RESEARCH USE ONLY. For commercial use, please contact <a href="mailto:partnerships@abcam.com">partnerships@abcam.com</a>.</b></p> <p>The Life Science industry has been in the grips of a reproducibility crisis for a number of years. Abcam is leading the way in addressing this with our range of recombinant monoclonal antibodies and knockout edited cell lines for gold-standard validation. Please check that this product meets your needs before purchasing.</p> <p>If you have any questions, special requirements or concerns, please send us an inquiry and/or contact our Support team ahead of purchase. Recommended alternatives for this product can be found below, along with publications, customer reviews and Q&amp;As</p>

### 性能

形式	Liquid
存放说明	Shipped at 4°C. Upon delivery aliquot and store at -20°C. Avoid freeze / thaw cycles.
存储溶液	pH: 7.60 Preservative: 0.1% Sodium azide Constituents: PBS, 1% BSA
纯度	Immunogen affinity purified
克隆	多克隆

## 应用

**The Abpromise guarantee** **Abpromise™**承诺保证使用ab15568于以下的经测试应用

“应用说明”部分 下显示的仅为推荐的起始稀释度;实际最佳的稀释度/浓度应由使用者检定。

应用	Ab评论	说明
ICC/IF	★★★★★ (1)	Use a concentration of 1 µg/ml.
IHC-P	★★★★★ (2)	1/200. Antigen retrieval is not essential but may optimise staining.
WB	★★★★★ (3)	Use at an assay dependent concentration. Predicted molecular weight: 55 kDa.

## 靶标

<b>功能</b>	Tubulin is the major constituent of microtubules. It binds two moles of GTP, one at an exchangeable site on the beta chain and one at a non-exchangeable site on the alpha chain.
<b>组织特异性</b>	Ubiquitously expressed with highest levels in spleen, thymus and immature brain.
<b>疾病相关</b>	Cortical dysplasia, complex, with other brain malformations 6 Skin creases, congenital symmetric circumferential, 1
<b>序列相似性</b>	Belongs to the tubulin family.
<b>结构域</b>	The highly acidic C-terminal region may bind cations such as calcium.
<b>翻译后修饰</b>	Some glutamate residues at the C-terminus are polyglutamylated, resulting in polyglutamate chains on the gamma-carboxyl group (PubMed:26875866). Polyglutamylation plays a key role in microtubule severing by spastin (SPAST). SPAST preferentially recognizes and acts on microtubules decorated with short polyglutamate tails: severing activity by SPAST increases as the number of glutamates per tubulin rises from one to eight, but decreases beyond this glutamylation threshold (PubMed:26875866). Some glutamate residues at the C-terminus are monoglycylated but not polyglycylated due to the absence of functional TLL10 in human. Monoglycylation is mainly limited to tubulin incorporated into axonemes (cilia and flagella). Both polyglutamylated and monoglycylated can coexist on the same protein on adjacent residues, and lowering glycylation levels increases polyglutamylated, and reciprocally. The precise function of monoglycylation is still unclear. Phosphorylated on Ser-172 by CDK1 during the cell cycle, from metaphase to telophase, but not in interphase. This phosphorylation inhibits tubulin incorporation into microtubules.
<b>细胞定位</b>	Cytoplasm, cytoskeleton.

## 图片



Western blot - Anti-beta Tubulin antibody (ab15568)

**All lanes :** Anti-beta Tubulin antibody (ab15568) at 1 µg/ml

**Lane 1 :** Human brain tissue lysate - total protein ([ab29466](#))

**Lane 2 :** U2OS (Human osteosarcoma cell line) Whole Cell Lysate

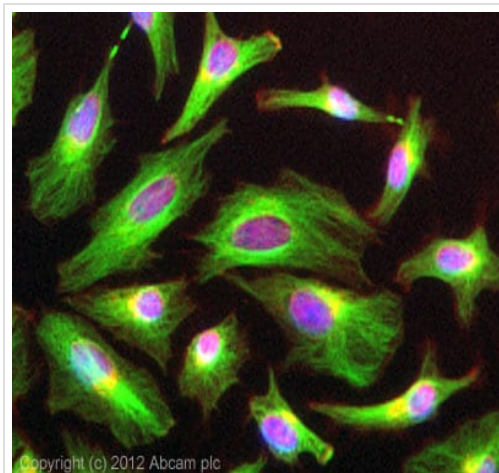
Lysates/proteins at 10 µg per lane.

### Secondary

**All lanes :** Goat polyclonal to Rabbit IgG - H&L - Pre-Adsorbed (HRP) at 1/3000 dilution

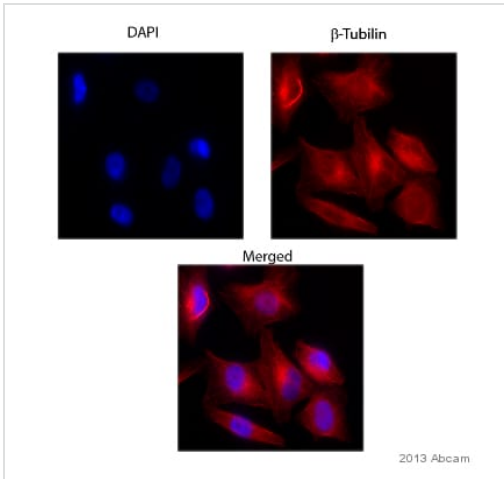
**Predicted band size:** 55 kDa

**Observed band size:** 55 kDa



Immunocytochemistry/ Immunofluorescence - Anti-beta Tubulin antibody (ab15568)

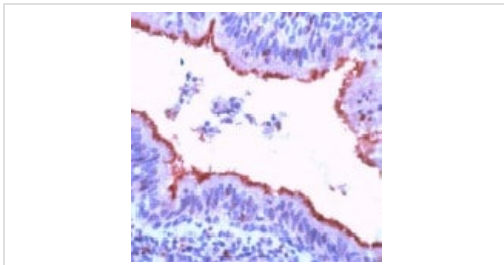
ICC/IF image of ab15568 stained HeLa cells. The cells were 4% formaldehyde fixed (10 min) and then incubated in 1%BSA / 10% normal goat serum / 0.3M glycine in 0.1% PBS-Tween for 1h to permeabilise the cells and block non-specific protein-protein interactions. The cells were then incubated with the antibody (ab15568, 1µg/ml) overnight at +4°C. The secondary antibody (green) was [ab96899](#), DyLight® 488 goat anti-rabbit IgG (H+L) used at a 1/250 dilution for 1h. Alexa Fluor® 594 WGA was used to label plasma membranes (red) at a 1/200 dilution for 1h. DAPI was used to stain the cell nuclei (blue) at a concentration of 1.43µM.



Immunocytochemistry/ Immunofluorescence - Anti-beta Tubulin antibody (ab15568)

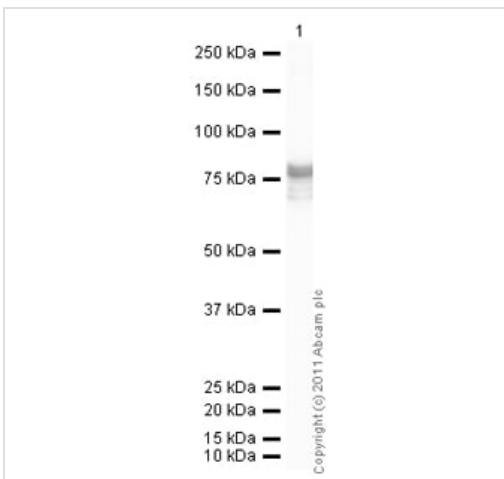
This image is courtesy of an anonymous Abreview

ab15568 staining beta Tubulin in IMR32 Human neuroblastoma cells by ICC/IF (Immunocytochemistry/immunofluorescence). Cells were fixed with paraformaldehyde, permeabilized with 0.3% Triton X-100 and blocked with 1% BSA for 1 hour at 25°C. Samples were incubated with primary antibody (1/100 in 1% BSA containing TBST) for 16 hours at 4°C. A Cy3®-conjugated Goat anti-rabbit IgG polyclonal (1:1000) was used as the secondary antibody. Blue - nuclei (DAPI).



Immunohistochemistry (Formalin/PFA-fixed paraffin-embedded sections) - Anti-beta Tubulin antibody (ab15568)

ab15568 staining beta Tubulin in Human lung by Immunohistochemistry (FFPE-sections).



Western blot - Anti-beta Tubulin antibody (ab15568)

**Please note:** All products are "FOR RESEARCH USE ONLY. NOT FOR USE IN DIAGNOSTIC PROCEDURES"

**Our Abpromise to you: Quality guaranteed and expert technical support**

- Replacement or refund for products not performing as stated on the datasheet
- Valid for 12 months from date of delivery
- Response to your inquiry within 24 hours
  
- We provide support in Chinese, English, French, German, Japanese and Spanish
- Extensive multi-media technical resources to help you
- We investigate all quality concerns to ensure our products perform to the highest standards

If the product does not perform as described on this datasheet, we will offer a refund or replacement. For full details of the Abpromise, please visit <https://www.abcam.cn/abpromise> or contact our technical team.

### **Terms and conditions**

---

- Guarantee only valid for products bought direct from Abcam or one of our authorized distributors