

Anti-beta Synuclein antibody [EP1537Y] ab76111

RabMAb

11 References **8 图像**

概述

产品名称	Anti-beta Synuclein抗体[EP1537Y]
描述	兔单克隆抗体[EP1537Y] to beta Synuclein
宿主	Rabbit
经测试应用	适用于: Flow Cyt (Intra), WB, IP, IHC-P, ICC/IF
种属反应性	与反应: Mouse, Rat, Human, Recombinant fragment
免疫原	Synthetic peptide within Human beta Synuclein aa 50-150. The exact sequence is proprietary. Database link: Q16143
阳性对照	WB: Human, mouse, and rat brain tissue lysate; IP: Human brain lysate; Flow Cyt (intra): PC-12 cells; ICC/IF: PC-12 cells; IHC: Human, mouse and rat cerebellum tissue.
常规说明	<p>This product is a recombinant monoclonal antibody, which offers several advantages including:</p> <ul style="list-style-type: none"> - High batch-to-batch consistency and reproducibility - Improved sensitivity and specificity - Long-term security of supply - Animal-free production <p>For more information see here.</p> <p>Our RabMAb[®] technology is a patented hybridoma-based technology for making rabbit monoclonal antibodies. For details on our patents, please refer to RabMAb[®] patents.</p>

性能

形式	Liquid
存放说明	Shipped at 4°C. Store at +4°C short term (1-2 weeks). Upon delivery aliquot. Store at -20°C. Avoid freeze / thaw cycle.
存储溶液	pH: 7.2 Preservative: 0.01% Sodium azide Constituents: 0.05% BSA, 40% Glycerol (glycerin, glycerine), 59% PBS
纯度	Protein A purified
克隆	单克隆
克隆编号	EP1537Y

同种型

IgG

应用

The Abpromise guarantee

Abpromise™承诺保证使用ab76111于以下的经测试应用

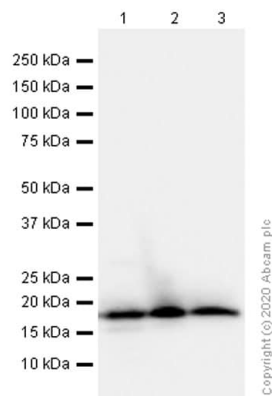
“应用说明”部分 下显示的仅为推荐的起始稀释度;实际最佳的稀释度/浓度应由使用者检定。

应用	Ab评论	说明
Flow Cyt (Intra)		1/100.
WB		1/5000 - 1/20000. Detects a band of approximately 18 kDa (predicted molecular weight: 14 kDa).
IP		1/20. For unpurified use at 1/40
IHC-P		1/50. Perform heat mediated antigen retrieval before commencing with IHC staining protocol. For unpurified use at 1/100-1/250 dilution
ICC/IF		1/100. For unpurified use at 1/100-1/250 dilution.

靶标

功能	Non-amyloid component of senile plaques found in Alzheimer disease. Could act as a regulator of SNCA aggregation process. Protects neurons from staurosporine and 6-hydroxy dopamine (6OHDA)-stimulated caspase activation in a p53/TP53-dependent manner. Contributes to restore the SNCA anti-apoptotic function abolished by 6OHDA. Not found in the Lewy bodies associated with Parkinson disease.
组织特异性	Expressed predominantly in brain; concentrated in presynaptic nerve terminals.
序列相似性	Belongs to the synuclein family.
翻译后修饰	Phosphorylated. Phosphorylation by G-protein coupled receptor kinases (GRK) is more efficient than phosphorylation by CK1, CK2 and CaM-kinase II.
细胞定位	Cytoplasm.

图片



Western blot - Anti-beta Synuclein antibody
[EP1537Y] (ab76111)

All lanes : Anti-beta Synuclein antibody [EP1537Y] (ab76111) at 1/10000 dilution (purified)

Lane 1 : Human brain lysate

Lane 2 : Mouse brain lysate

Lane 3 : Rat brain lysate

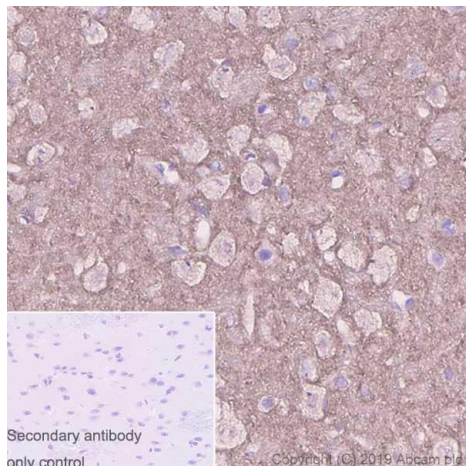
Lysates/proteins at 20 µg per lane.

Secondary

All lanes : Goat Anti-Rabbit IgG (HRP) with minimal cross-reactivity with human IgG at 1/2000 dilution

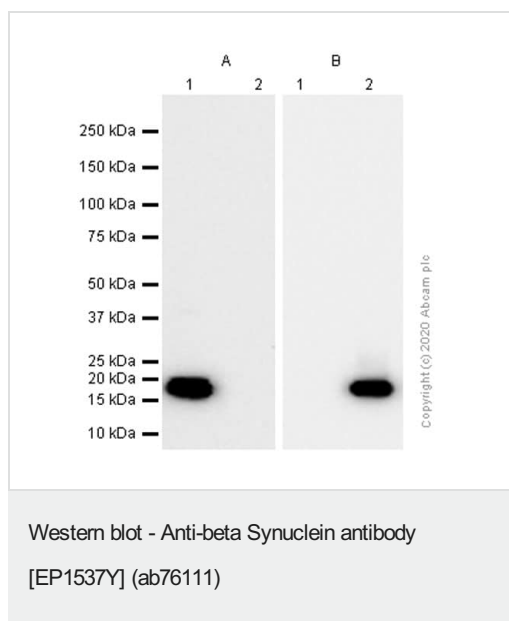
Predicted band size: 14 kDa

Observed band size: 18 kDa



Immunohistochemistry (Formalin/PFA-fixed paraffin-embedded sections) - Anti-beta Synuclein antibody
[EP1537Y] (ab76111)

Immunohistochemistry (Formalin/PFA-fixed paraffin-embedded sections) analysis of rat cerebrum tissue sections labeling beta Synuclein with purified ab76111 at 1/50 dilution (2.4 µg/mL). Perform heat mediated antigen retrieval using **ab93684** (Tris/EDTA buffer, pH 9.0). ImmunoHistoProbe one step HRP Polymer (ready to use) was used as the secondary antibody. Negative control: PBS instead of the primary antibody. Hematoxylin was used as a counterstain.



All lanes : Anti-beta Synuclein antibody [EP1537Y] (ab76111) at 1/10000 dilution (purified)

Lane 1 : His-Tagged human beta Synuclein (aa 1 to 134) recombinant protein

Lane 2 : His-Tagged alpha synuclein (aa 1 to 140) recombinant protein

Lysates/proteins at 0.015 µg per lane.

Secondary

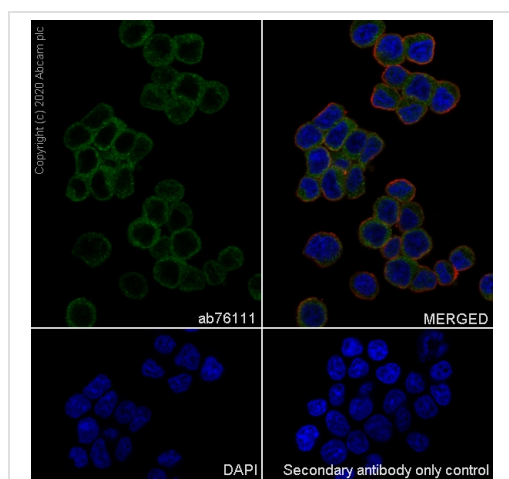
All lanes : Goat Anti-Rabbit IgG H&L (HRP) ([ab97051](#)) at 1/20000 dilution

Predicted band size: 14 kDa

Observed band size: 18 kDa

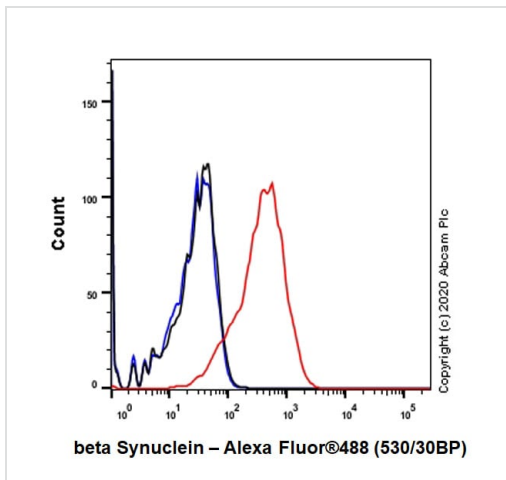
A: Anti-beta Synuclein antibody [EP1537Y] (ab76111)

B: Anti-Alpha-synuclein antibody [MJFR1] ([ab138501](#))



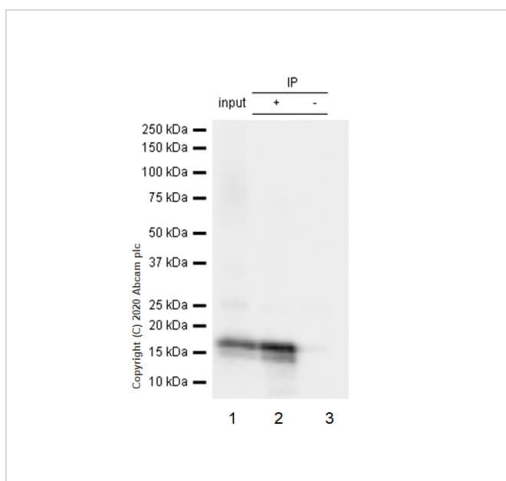
Immunocytochemistry/ Immunofluorescence - Anti-beta Synuclein antibody [EP1537Y] (ab76111)

Immunocytochemistry/ Immunofluorescence analysis of PC-12 (Rat adrenal gland pheochromocytoma) cells labeling beta Synuclein with purified ab76111 at 1/50 dilution (2.4 µg/mL). Cells were fixed in 4% Paraformaldehyde and permeabilized with 0.1% TritonX-100. Cells were counterstained with Ab195889 Anti-alpha Tubulin antibody [DM1A] - Microtubule Marker (Alexa Fluor® 594) 1/200 (2.5 µg/mL). Goat anti rabbit IgG (Alexa Fluor® 488, [ab150077](#)) was used as the secondary antibody at 1/1000 (2 µg/mL) dilution. DAPI (blue) was used as nuclear counterstain. PBS instead of the primary antibody was used as the secondary antibody only control.



Flow Cytometry (Intracellular) - Anti-beta Synuclein antibody [EP1537Y] (ab76111)

Intracellular Flow Cytometry analysis of PC-12 (Rat adrenal gland pheochromocytoma) cells labeling beta Synuclein with purified ab76111 at 1/100 dilution (10µg/mL) (Red). Cells were fixed with 4% Paraformaldehyde and permeabilised with 90% Methanol. A Goat anti rabbit IgG (Alexa Fluor® 488, [ab150077](#)) secondary antibody was used at 1/2000. Isotype control - Rabbit monoclonal IgG (Black). Unlabeled control - Cell without incubation with primary antibody and secondary antibody (Blue).



Immunoprecipitation - Anti-beta Synuclein antibody [EP1537Y] (ab76111)

Purified ab76111 at 1/20 dilution (0.6 µg) immunoprecipitating beta Synuclein in Human brain lysate.

Lane 1 (input): Human brain lysate 10 µg

Lane 2 (+): ab76111 + Human brain lysate.

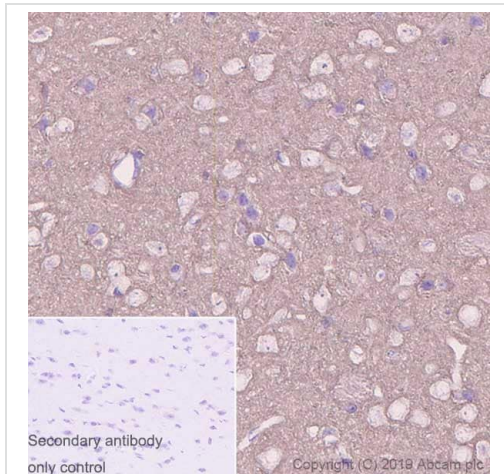
Lane 3 (-): Rabbit monoclonal IgG ([ab172730](#)) instead of ab76111 in Human brain lysate.

VeriBlot for IP Detection Reagent (HRP) ([ab131366](#)) (1/1000 dilution) was used for Western blotting.

Blocking Buffer and concentration: 5% NFDm/TBST.

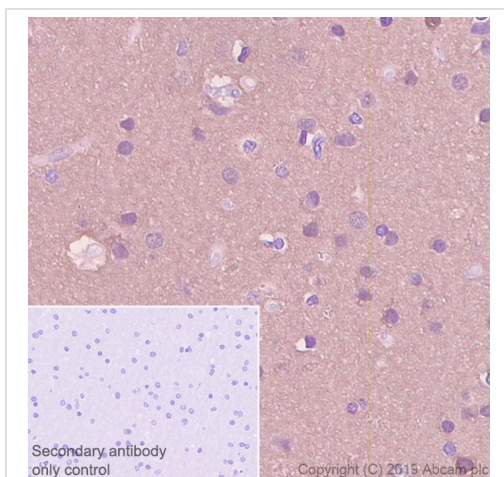
Diluting buffer and concentration: 5% NFDm/TBST.

Observed band size: 18 kDa



Immunohistochemistry (Formalin/PFA-fixed paraffin-embedded sections) - Anti-beta Synuclein antibody [EP1537Y] (ab76111)

Immunohistochemistry (Formalin/PFA-fixed paraffin-embedded sections) analysis of mouse cerebrum tissue sections labeling beta Synuclein with purified ab76111 at 1/50 dilution (2.4 µg/mL). Perform heat mediated antigen retrieval using [ab93684](#) (Tris/EDTA buffer, pH 9.0). ImmunoHistoProbe one step HRP Polymer (ready to use) was used as the secondary antibody. Negative control: PBS instead of the primary antibody. Hematoxylin was used as a counterstain.



Immunohistochemistry (Formalin/PFA-fixed paraffin-embedded sections) - Anti-beta Synuclein antibody [EP1537Y] (ab76111)

Immunohistochemistry (Formalin/PFA-fixed paraffin-embedded sections) analysis of human cerebrum tissue sections labeling beta Synuclein with purified ab76111 at 1/50 dilution (2.4 µg/mL). Perform heat mediated antigen retrieval using [ab93684](#) (Tris/EDTA buffer, pH 9.0). ImmunoHistoProbe one step HRP Polymer (ready to use) was used as the secondary antibody. Negative control: PBS instead of the primary antibody. Hematoxylin was used as a counterstain.

Please note: All products are "FOR RESEARCH USE ONLY. NOT FOR USE IN DIAGNOSTIC PROCEDURES"

Our Abpromise to you: Quality guaranteed and expert technical support

- Replacement or refund for products not performing as stated on the datasheet
- Valid for 12 months from date of delivery
- Response to your inquiry within 24 hours
- We provide support in Chinese, English, French, German, Japanese and Spanish
- Extensive multi-media technical resources to help you
- We investigate all quality concerns to ensure our products perform to the highest standards

If the product does not perform as described on this datasheet, we will offer a refund or replacement. For full details of the Abpromise,

please visit <https://www.abcam.cn/abpromise> or contact our technical team.

Terms and conditions

- Guarantee only valid for products bought direct from Abcam or one of our authorized distributors