

Anti-beta Synuclein antibody ab6165

★★★★★ [1 Abreviews](#) [6 References](#) [1 图像](#)

概述

产品名称	Anti-beta Synuclein抗体
描述	兔多克隆抗体to beta Synuclein
宿主	Rabbit
特异性	Less than 0.1% cross reactivity against human alpha-synuclein Cross reactivity: This antibody is known to react with human and rat. Not yet tested in other species.
经测试应用	适用于: IHC-P
种属反应性	与反应: Human
免疫原	Synthetic peptide (IEPLMEPEGSYEDPPQE) corresponding to the carboxyl terminal of human beta-synuclein (108- 125) and was conjugated to diphtheria toxoid via a cystine residue added to the carboxyl terminus of the peptide. The conjugate was cross-linked by maleimidocaproyl-N-hydroxy succinimide.

 [Run BLAST with](#)  [Run BLAST with](#) 

常规说明

The Life Science industry has been in the grips of a reproducibility crisis for a number of years. Abcam is leading the way in addressing this with our range of recombinant monoclonal antibodies and knockout edited cell lines for gold-standard validation. Please check that this product meets your needs before purchasing.

If you have any questions, special requirements or concerns, please send us an inquiry and/or contact our Support team ahead of purchase. Recommended alternatives for this product can be found below, along with publications, customer reviews and Q&As

性能

形式	Liquid
存放说明	Shipped at 4°C. Store at +4°C short term (1-2 weeks). Add glycerol to a final volume of 50% for extra stability and aliquot. Store at -20°C or -80°C. Avoid freeze / thaw cycle.
存储溶液	pH: 7
纯度	Whole antiserum
克隆	多克隆
同种型	IgG

应用

The Abpromise guarantee

Abpromise™ 承诺保证使用ab6165于以下的经测试应用

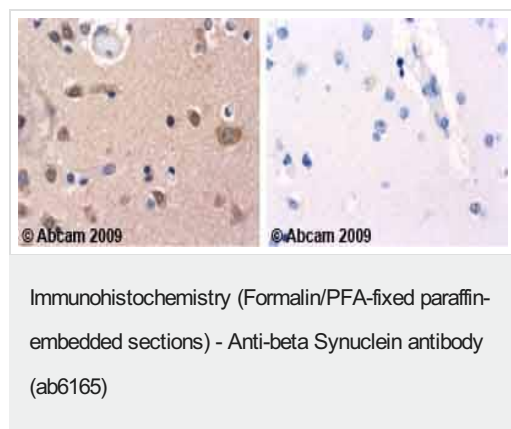
“应用说明”部分 下显示的仅为推荐的起始稀释度;实际最佳的稀释度/浓度应由使用者检定。

应用	Ab评论	说明
IHC-P	★★★★★ (1)	1/500 - 1/2000.

靶标

功能	Non-amyloid component of senile plaques found in Alzheimer disease. Could act as a regulator of SNCA aggregation process. Protects neurons from staurosporine and 6-hydroxy dopamine (6OHDA)-stimulated caspase activation in a p53/TP53-dependent manner. Contributes to restore the SNCA anti-apoptotic function abolished by 6OHDA. Not found in the Lewy bodies associated with Parkinson disease.
组织特异性	Expressed predominantly in brain; concentrated in presynaptic nerve terminals.
序列相似性	Belongs to the synuclein family.
翻译后修饰	Phosphorylated. Phosphorylation by G-protein coupled receptor kinases (GRK) is more efficient than phosphorylation by CK1, CK2 and CaM-kinase II.
细胞定位	Cytoplasm.

图片



ab6165 staining beta synuclein in human occipital cortex.

Left panel: with primary antibody diluted 1:4000. Right panel: isotype control.

Sections were stained using an automated system (DAKO Autostainer Plus), at room temperature: sections were rehydrated and antigen retrieved with the Dako 3 in 1 AR buffers citrate pH6.1. Slides were peroxidase blocked in 3% H₂O₂ in methanol for 10 mins. They were then blocked with Dako Protein block for 10 minutes (containing casein 0.25% in PBS) then incubated with primary antibody for 20 min and detected with Dako envision flex amplification kit for 30 minutes. Colorimetric detection was completed with Diaminobenzidine for 5 minutes. Slides were counterstained with Haematoxylin and coverslipped under DePeX. Please note that for manual staining we recommend to optimize the primary antibody concentration and incubation time (overnight incubation), and amplification may be required.

Please note: All products are "FOR RESEARCH USE ONLY. NOT FOR USE IN DIAGNOSTIC PROCEDURES"

Our Abpromise to you: Quality guaranteed and expert technical support

- Replacement or refund for products not performing as stated on the datasheet
- Valid for 12 months from date of delivery
- Response to your inquiry within 24 hours

- We provide support in Chinese, English, French, German, Japanese and Spanish
- Extensive multi-media technical resources to help you
- We investigate all quality concerns to ensure our products perform to the highest standards

If the product does not perform as described on this datasheet, we will offer a refund or replacement. For full details of the Abpromise, please visit <https://www.abcam.cn/abpromise> or contact our technical team.

Terms and conditions

- Guarantee only valid for products bought direct from Abcam or one of our authorized distributors