


Anti-beta Catenin (phospho Y489) antibody ab119801

[2 References](#) [2 图像](#)

概述

产品名称	Anti-beta Catenin (phospho Y489)抗体
描述	兔多克隆抗体to beta Catenin (phospho Y489)
宿主	Rabbit
特异性	Immunogen has high homology to the conserved site in gamma-Catenin (Y480).
经测试应用	适用于: WB, ICC
种属反应性	与反应: Human 预测可用于: Mouse, Rat 
免疫原	Synthetic peptide. This information is proprietary to Abcam and/or its suppliers.
阳性对照	A431 cells and cell lysates treated with pervanadate.
常规说明	Do not aliquot. The Life Science industry has been in the grips of a reproducibility crisis for a number of years. Abcam is leading the way in addressing this with our range of recombinant monoclonal antibodies and knockout edited cell lines for gold-standard validation. Please check that this product meets your needs before purchasing. If you have any questions, special requirements or concerns, please send us an inquiry and/or contact our Support team ahead of purchase. Recommended alternatives for this product can be found below, along with publications, customer reviews and Q&As

性能

形式	Liquid
存放说明	Shipped at 4°C. Store at -20°C. Stable for 12 months at -20°C.
存储溶液	Preservative: 0.05% Sodium azide Constituents: 49% PBS, 50% Glycerol, 0.1% BSA
纯度	Immunogen affinity purified
纯化说明	ab119801 was cross-adsorbed to phospho-beta Catenin (phospho Y654) peptide before affinity purification using phospho-beta Catenin (Y489) peptide (without carrier).
克隆	多克隆
同种型	IgG

应用

The Abpromise guarantee

Abpromise™ 承诺保证使用 ab119801 于以下的经测试应用

“应用说明”部分 下显示的仅为推荐的起始稀释度;实际最佳的稀释度/浓度应由使用者检定。

应用	Ab 评论	说明
WB		1/1000. Detects a band of approximately 88 kDa (predicted molecular weight: 85 kDa).
ICC		1/250.

靶标

功能

Key downstream component of the canonical Wnt signaling pathway. In the absence of Wnt, forms a complex with AXIN1, AXIN2, APC, CSNK1A1 and GSK3B that promotes phosphorylation on N-terminal Ser and Thr residues and ubiquitination of CTNNB1 via BTRC and its subsequent degradation by the proteasome. In the presence of Wnt ligand, CTNNB1 is not ubiquitinated and accumulates in the nucleus, where it acts as a coactivator for transcription factors of the TCF/LEF family, leading to activate Wnt responsive genes.

Involved in the regulation of cell adhesion. The majority of beta-catenin is localized to the cell membrane and is part of E-cadherin/catenin adhesion complexes which are proposed to couple cadherins to the actin cytoskeleton.

组织特异性

Expressed in several hair follicle cell types: basal and peripheral matrix cells, and cells of the outer and inner root sheaths. Expressed in colon.

疾病相关

Defects in CTNNB1 are associated with colorectal cancer (CRC) [MIM:114500].

Note=Activating mutations in CTNNB1 have oncogenic activity resulting in tumor development. Somatic mutations are found in various tumor types, including colon cancers, ovarian and prostate carcinomas, hepatoblastoma (HB), hepatocellular carcinoma (HCC). HBs are malignant embryonal tumors mainly affecting young children in the first three years of life.

Defects in CTNNB1 are a cause of pilomatixoma (PTR) [MIM:132600]; a common benign skin tumor.

Defects in CTNNB1 are a cause of medulloblastoma (MDB) [MIM:155255]. MDB is a malignant, invasive embryonal tumor of the cerebellum with a preferential manifestation in children.

Defects in CTNNB1 are a cause of susceptibility to ovarian cancer (OC) [MIM:167000]. Ovarian cancer common malignancy originating from ovarian tissue. Although many histologic types of ovarian neoplasms have been described, epithelial ovarian carcinoma is the most common form. Ovarian cancers are often asymptomatic and the recognized signs and symptoms, even of late-stage disease, are vague. Consequently, most patients are diagnosed with advanced disease.

Note=A chromosomal aberration involving CTNNB1 is found in salivary gland pleiomorphic adenomas, the most common benign epithelial tumors of the salivary gland. Translocation t(3;8) (p21;q12) with PLAG1.

序列相似性

Belongs to the beta-catenin family.

Contains 12 ARM repeats.

翻译后修饰

Phosphorylation by GSK3B requires prior phosphorylation of Ser-45 by another kinase. Phosphorylation proceeds then from Thr-41 to Ser-37 and Ser-33.

EGF stimulates tyrosine phosphorylation. Phosphorylation on Tyr-654 decreases CDH1 binding and enhances TBP binding.

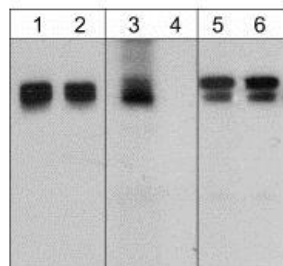
Ubiquitinated by the SCF(BTRC) E3 ligase complex when phosphorylated by GSK3B, leading to

its degradation. Ubiquitinated by a E3 ubiquitin ligase complex containing UBE2D1, SIAH1, CACYBP/SIP, SKP1, APC and TBL1X, leading to its subsequent proteasomal degradation.

细胞定位

Cytoplasm. Nucleus. Cytoplasm > cytoskeleton. Cell junction > adherens junction. Cell junction. Cell membrane. Cytoplasmic when it is unstabilized (high level of phosphorylation) or bound to CDH1. Translocates to the nucleus when it is stabilized (low level of phosphorylation). Interaction with GLIS2 and MUC1 promotes nuclear translocation. Interaction with EMD inhibits nuclear localization.

图片



Western blot - Anti-beta Catenin (phospho Y489) antibody (ab119801)

Lanes 1-2 : Anti-gamma Catenin at 1/1000 dilution

Lanes 3-4 : Anti-beta Catenin (phospho Y489) antibody (ab119801) at 1/1000 dilution

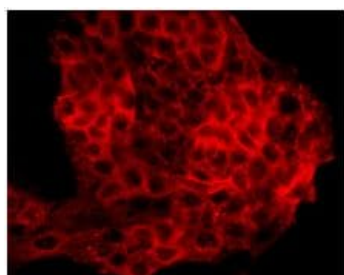
Lanes 5-6 : Anti-beta Catenin at 1/1000 dilution

Lanes 1 & 3 & 5 : A431 cell lysate, stimulated with pervanadate (1 mM) for 30 min

Lane 2 : A431 cell lysate, stimulated with pervanadate (1 mM) for 30 min then treated with alkaline phosphatase

Lanes 4 & 6 : A431 cell lysate, stimulated with pervanadate (1 mM) for 30 min then treated with alkaline phosphatase

Predicted band size: 85 kDa



Immunocytochemistry - Anti-beta Catenin (phospho Y489) antibody (ab119801)

ab119801 at 1/250 dilution staining beta Catenin in A431 cells treated with pervanadate by Immunocytochemistry followed by detection with secondary antibody conjugated to Cy3.

Please note: All products are "FOR RESEARCH USE ONLY. NOT FOR USE IN DIAGNOSTIC PROCEDURES"

Our Abpromise to you: Quality guaranteed and expert technical support

- Replacement or refund for products not performing as stated on the datasheet

- Valid for 12 months from date of delivery
- Response to your inquiry within 24 hours
- We provide support in Chinese, English, French, German, Japanese and Spanish
- Extensive multi-media technical resources to help you
- We investigate all quality concerns to ensure our products perform to the highest standards

If the product does not perform as described on this datasheet, we will offer a refund or replacement. For full details of the Abpromise, please visit <https://www.abcam.cn/abpromise> or contact our technical team.

Terms and conditions

- Guarantee only valid for products bought direct from Abcam or one of our authorized distributors