

Anti-beta Catenin (phospho S37) antibody [EP742(2)Y] ab75777

重组 RabMAb

15 References [6 图像](#)

概述

产品名称	Anti-beta Catenin (phospho S37)抗体[EP742(2)Y]
描述	兔单克隆抗体[EP742(2)Y] to beta Catenin (phospho S37)
宿主	Rabbit
特异性	<i>Stimulation may be required to allow detection of the phosphorylated protein. Please see images below for recommended treatment conditions and positive controls.</i>
经测试应用	适用于: WB, Dot blot 不适用于: Flow Cyt, ICC/IF, IHC-P or IP
种属反应性	与反应: Mouse, Rat, Human
免疫原	Synthetic peptide. This information is proprietary to Abcam and/or its suppliers.
阳性对照	293T cell lysates, untreated or treated with calyculin A.
常规说明	This product is a recombinant monoclonal antibody, which offers several advantages including: <ul style="list-style-type: none"> - High batch-to-batch consistency and reproducibility - Improved sensitivity and specificity - Long-term security of supply - Animal-free production For more information see here . Our RabMAb [®] technology is a patented hybridoma-based technology for making rabbit monoclonal antibodies. For details on our patents, please refer to RabMAb[®] patents . Mouse: We have preliminary internal testing data to indicate this antibody may not react with this species. Please contact us for more information.

性能

形式	Liquid
存放说明	Shipped at 4°C. Upon delivery aliquot and store at -20°C. Avoid freeze / thaw cycles.
存储溶液	pH: 7.20 Preservative: 0.01% Sodium azide Constituents: 9% PBS, 40% Glycerol (glycerin, glycerine), 0.05% BSA, 50% Tissue culture supernatant

应用

“应用说明”部分下显示的仅为推荐的起始稀释度;实际最佳的稀释度/浓度应由使用者检定。

应用说明 Is unsuitable for Flow Cyt, ICC/IF, IHC-P or IP.

靶标

组织特异性	Expressed in several hair follicle cell types: basal and peripheral matrix cells, and cells of the outer and inner root sheaths. Expressed in colon.
-------	--

2

(p21;q12) with PLAG1.

序列相似性

Belongs to the beta-catenin family.

Contains 12 ARM repeats.

翻译后修饰

Phosphorylation by GSK3B requires prior phosphorylation of Ser-45 by another kinase.

Phosphorylation proceeds then from Thr-41 to Ser-37 and Ser-33.

EGF stimulates tyrosine phosphorylation. Phosphorylation on Tyr-654 decreases CDH1 binding and enhances TBP binding.

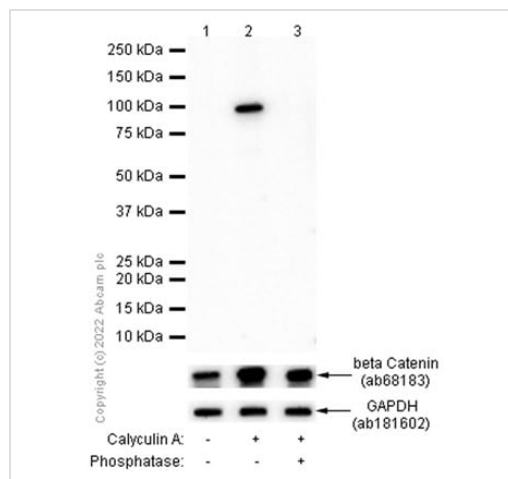
Ubiquitinated by the SCF(BTRC) E3 ligase complex when phosphorylated by GSK3B, leading to its degradation. Ubiquitinated by a E3 ubiquitin ligase complex containing UBE2D1, SIAH1, CACYBP/SIP, SKP1, APC and TBL1X, leading to its subsequent proteasomal degradation.

细胞定位

Cytoplasm. Nucleus. Cytoplasm > cytoskeleton. Cell junction > adherens junction. Cell junction.

Cell membrane. Cytoplasmic when it is unstabilized (high level of phosphorylation) or bound to CDH1. Translocates to the nucleus when it is stabilized (low level of phosphorylation). Interaction with GLIS2 and MUC1 promotes nuclear translocation. Interaction with EMD inhibits nuclear localization.

图片



Western blot - Anti-beta Catenin (phospho S37) antibody [EP742(2)Y] (ab75777)

All lanes : Anti-beta Catenin (phospho S37) antibody [EP742(2)Y] (ab75777) at 1/1000 dilution

Lane 1 : Untreated C6 (Rat glial tumor glial cell) whole cell lysate

Lane 2 : C6 treated with 100ng/ml Calyculin A for 30 min whole cell lysate

Lane 3 : C6 treated with 100ng/ml Calyculin A for 30 min whole cell lysate, then membrane treated with Alkaline Phosphatase for 1 hour

Lysates/proteins at 15 µg per lane.

Secondary

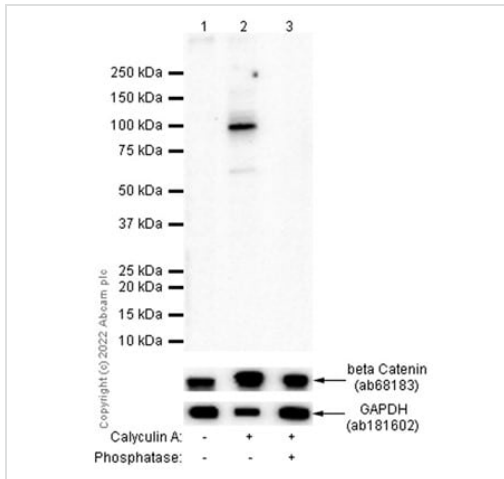
All lanes : Goat Anti-Rabbit IgG H&L (HRP) ([ab97051](#)) at 1/20000 dilution

Predicted band size: 85 kDa

Observed band size: 100 kDa

Exposure time: 40 seconds

Blocking and diluting buffer and concentration: 5% NFDM/TBST



Western blot - Anti-beta Catenin (phospho S37) antibody [EP742(2)Y] (ab75777)

All lanes : Anti-beta Catenin (phospho S37) antibody [EP742(2)Y] (ab75777) at 1/1000 dilution

Lane 1 : Untreated NIH/3T3 (Mouse embryonic fibroblast) whole cell lysate

Lane 2 : NIH/3T3 treated with 100nM Calyculin A for 30 min whole cell lysate

Lane 3 : NIH/3T3 treated with 100nM Calyculin A for 30 min whole cell lysate, then membrane treated with Alkaline Phosphatase for 1 hour

Lysates/proteins at 15 µg per lane.

Secondary

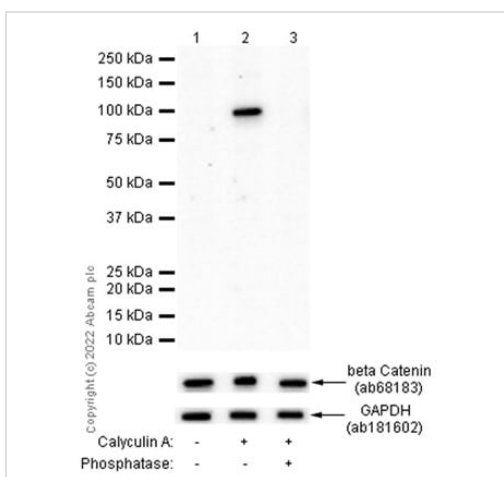
All lanes : Goat Anti-Rabbit IgG H&L (HRP) (**ab97051**) at 1/20000 dilution

Predicted band size: 85 kDa

Observed band size: 100 kDa

Exposure time: 120 seconds

Blocking and diluting buffer and concentration: 5% NFDM/TBST



Western blot - Anti-beta Catenin (phospho S37) antibody [EP742(2)Y] (ab75777)

All lanes : Anti-beta Catenin (phospho S37) antibody [EP742(2)Y] (ab75777) at 1/1000 dilution

Lane 1 : Untreated HeLa (Human cervix adenocarcinoma epithelial cell) whole cell lysate

Lane 2 : HeLa treated with 100nM Calyculin A for 30 min whole cell lysate

Lane 3 : HeLa treated with 100nM Calyculin A for 30 min whole cell lysate, then membrane treated with Alkaline Phosphatase for 1 hour

Lysates/proteins at 15 µg per lane.

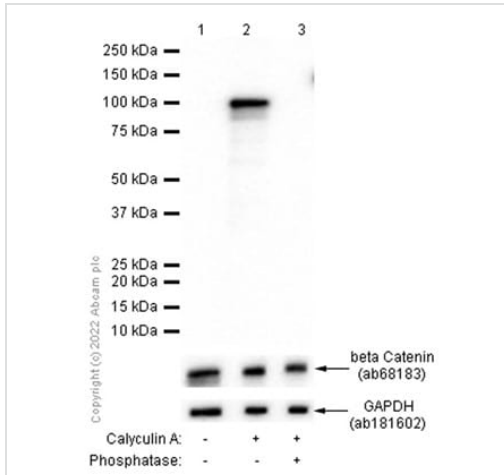
Secondary

All lanes : Goat Anti-Rabbit IgG H&L (HRP) (**ab97051**) at 1/20000 dilution

Predicted band size: 85 kDa
Observed band size: 100 kDa

Exposure time: 80 seconds

Blocking and diluting buffer and concentration: 5%
NFDM/TBST



Western blot - Anti-beta Catenin (phospho S37)
antibody [EP742(2)Y] (ab75777)

All lanes : Anti-beta Catenin (phospho S37) antibody [EP742(2)Y]
(ab75777) at 1/1000 dilution

Lane 1 : Untreated HEK-293 (Human embryonic kidney epithelial
cell) whole cell lysate

Lane 2 : HEK-293 treated with 50nM Calyculin A for 3 hours whole
cell lysate

Lane 3 : HEK-293 treated with 50nM Calyculin A for 3 hours whole
cell lysate, then membrane treated with Alkaline Phosphatase for 1
hour

Lysates/proteins at 15 µg per lane.

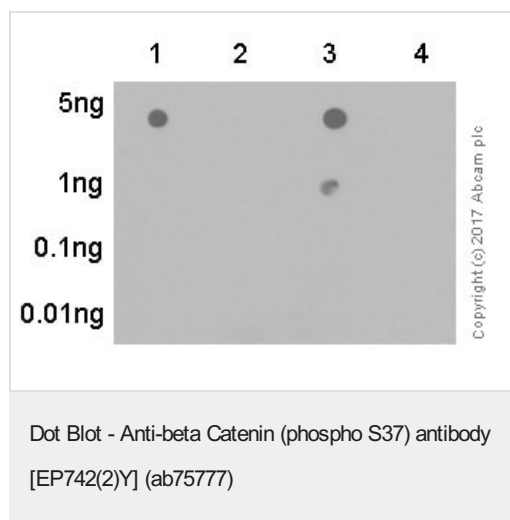
Secondary

All lanes : Goat Anti-Rabbit IgG H&L (HRP) (**ab97051**) at 1/20000
dilution

Predicted band size: 85 kDa
Observed band size: 100 kDa

Exposure time: 10 seconds

Blocking and diluting buffer and concentration: 5%
NFDM/TBST



Dot blot analysis of Beta catenin phospho peptide with ab75777 at 1/1000 exposed for 3 minutes. Goat Anti-Rabbit IgG, (H+L), Peroxidase conjugated (**ab97051**) (1/100,000) was used as the secondary antibody. Blocking buffer 5% NFDm/TBST. Diluting buffer 5% NFDm/TBST.

Lane 1: Beta catenin (pS33+pS37) phospho peptide

Lane 2: Beta catenin (pS33) phospho peptide

Lane 3: Beta catenin (pS37) phospho peptide

Lane 4: Beta catenin non-phospho peptide

Why choose a recombinant antibody?

Research with confidence
Consistent and reproducible results

Long-term and scalable supply
Recombinant technology

Success from the first experiment
Confirmed specificity

Ethical standards compliant
Animal-free production

Anti-beta Catenin (phospho S37) antibody
[EP742(2)Y] (ab75777)

Please note: All products are "FOR RESEARCH USE ONLY. NOT FOR USE IN DIAGNOSTIC PROCEDURES"

Our Abpromise to you: Quality guaranteed and expert technical support

- Replacement or refund for products not performing as stated on the datasheet
- Valid for 12 months from date of delivery
- Response to your inquiry within 24 hours
- We provide support in Chinese, English, French, German, Japanese and Spanish
- Extensive multi-media technical resources to help you

- We investigate all quality concerns to ensure our products perform to the highest standards

If the product does not perform as described on this datasheet, we will offer a refund or replacement. For full details of the Abpromise, please visit <https://www.abcam.cn/abpromise> or contact our technical team.

Terms and conditions

- Guarantee only valid for products bought direct from Abcam or one of our authorized distributors