


Anti-beta Actin antibody - Cytoskeleton Marker ab16039

[87 References](#) [3 图像](#)

概述

产品名称	Anti-beta Actin抗体- Cytoskeleton Marker
描述	兔多克隆抗体to beta Actin - Cytoskeleton Marker
宿主	Rabbit
经测试应用	适用于: WB, IHC-P, IP
种属反应性	与反应: Human 预测可用于: Mouse, Rat, Sheep, Rabbit, Horse, Chicken, Guinea pig, Cow, Cat, Dog, Pig, Xenopus laevis, Chimpanzee, Drosophila melanogaster, Zebrafish, Xenopus tropicalis 
免疫原	Synthetic peptide within Human beta Actin aa 1-100. The exact sequence is proprietary. Database link: P60709
阳性对照	WB: Recombinant Human alpha smooth muscle Actin protein (ab114148), U-2 OS and SK-N-SH cell lysate. IHC-P: Human leiomyoma tissue.
常规说明	<p>This product is FOR RESEARCH USE ONLY. For commercial use, please contact partnerships@abcam.com.</p> <p>The Life Science industry has been in the grips of a reproducibility crisis for a number of years. Abcam is leading the way in addressing this with our range of recombinant monoclonal antibodies and knockout edited cell lines for gold-standard validation. Please check that this product meets your needs before purchasing.</p> <p>If you have any questions, special requirements or concerns, please send us an inquiry and/or contact our Support team ahead of purchase. Recommended alternatives for this product can be found below, along with publications, customer reviews and Q&As</p>

性能

形式	Liquid
存放说明	Shipped at 4°C. Upon delivery aliquot and store at -20°C. Avoid freeze / thaw cycles.
存储溶液	pH: 7.60 Preservative: 0.1% Sodium azide Constituents: PBS, 1% BSA
纯度	Immunogen affinity purified
克隆	多克隆

应用

The Abpromise guarantee **Abpromise™**承诺保证使用ab16039于以下的经测试应用

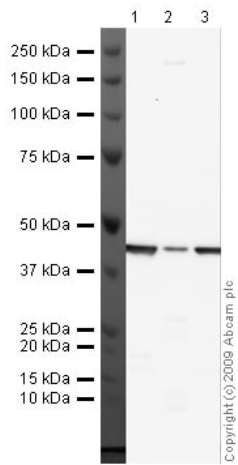
“应用说明”部分下显示的仅为推荐的起始稀释度;实际最佳的稀释度/浓度应由使用者检定。

应用	Ab评论	说明
WB		Use at an assay dependent concentration. Detects a band of approximately 42 kDa (predicted molecular weight: 42 kDa).
IHC-P		1/100. Perform heat mediated antigen retrieval via the pressure cooker method before commencing with IHC staining protocol.
IP		Use a concentration of 5 µg/ml.

靶标

功能	Actins are highly conserved proteins that are involved in various types of cell motility and are ubiquitously expressed in all eukaryotic cells.
疾病相关	Defects in ACTB are a cause of dystonia juvenile-onset (DYTJ) [MIM:607371]. DYTJ is a form of dystonia with juvenile onset. Dystonia is defined by the presence of sustained involuntary muscle contraction, often leading to abnormal postures. DYTJ patients manifest progressive, generalized, dopa-unresponsive dystonia, developmental malformations and sensory hearing loss.
序列相似性	Belongs to the actin family.
翻译后修饰	ISGylated.
细胞定位	Cytoplasm > cytoskeleton. Localized in cytoplasmic mRNP granules containing untranslated mRNAs.

图片



Western blot - Anti-beta Actin antibody -
Cytoskeleton Marker (ab16039)

All lanes : Anti-beta Actin antibody - Cytoskeleton Marker
(ab16039) at 1 µg/ml

Lane 1 : SK-N-SH (human neuroblastoma) whole cell lysate

Lane 2 : Human spleen tissue lysate - total protein (**ab29699**)

Lane 3 : U-2 OS (human osteosarcoma cell line) whole cell lysate

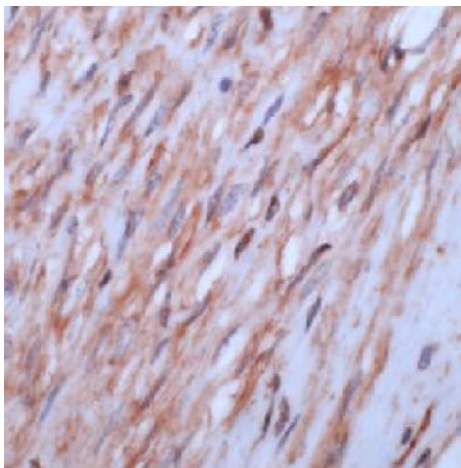
Lysates/proteins at 10 µg per lane.

Secondary

All lanes : Goat polyclonal to Rabbit IgG - H&L - Pre-Adsorbed
(HRP) at 1/3000 dilution

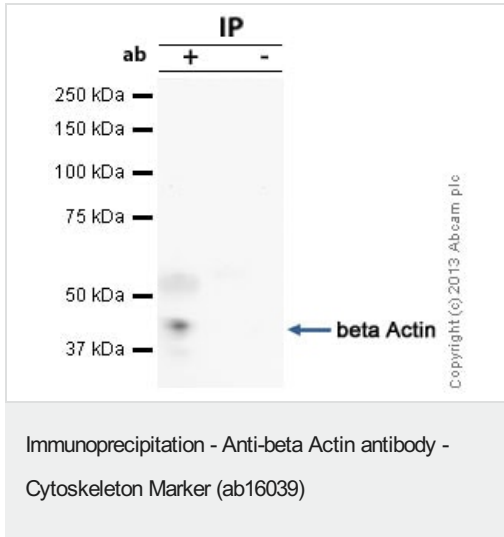
Predicted band size: 42 kDa

Observed band size: 42 kDa



Immunohistochemistry (Formalin/PFA-fixed paraffin-
embedded sections) - Anti-beta Actin antibody -
Cytoskeleton Marker (ab16039)

Formalin-fixed, paraffin-embedded human leiomyoma tissue
stained for beta Actin with ab16039 (1/100 dilution) in
immunohistochemical analysis.



beta Actin was immunoprecipitated using 0.5mg SK-N-SH (human neuroblastoma cell line) whole cell extract, 5 µg of Rabbit polyclonal to beta Actin and 50 µl of protein G magnetic beads (+). No antibody was added to the control (-).

The antibody was incubated under agitation with Protein G beads for 10 minutes, SK-N-SH whole cell extract lysate diluted in RIPA buffer was added to each sample and incubated for a further 10 minutes under agitation.

Proteins were eluted by addition of 40 µl SDS loading buffer and incubated for 10 minutes at 70°C; 10 µl of each sample was separated on a SDS PAGE gel, transferred to a nitrocellulose membrane, blocked with 5% BSA and probed with ab16039.

Secondary: Mouse monoclonal [SB62a] Secondary Antibody to Rabbit IgG light chain (HRP) ([ab99697](#)).

Band: 42kDa; beta Actin

Please note: All products are "FOR RESEARCH USE ONLY. NOT FOR USE IN DIAGNOSTIC PROCEDURES"

Our Abpromise to you: Quality guaranteed and expert technical support

- Replacement or refund for products not performing as stated on the datasheet
- Valid for 12 months from date of delivery
- Response to your inquiry within 24 hours
- We provide support in Chinese, English, French, German, Japanese and Spanish
- Extensive multi-media technical resources to help you
- We investigate all quality concerns to ensure our products perform to the highest standards

If the product does not perform as described on this datasheet, we will offer a refund or replacement. For full details of the Abpromise, please visit <https://www.abcam.cn/abpromise> or contact our technical team.

Terms and conditions

- Guarantee only valid for products bought direct from Abcam or one of our authorized distributors