


Anti-beta 1 Adrenergic Receptor antibody ab85037

★★★★★ 4 Abreviews 4 References 2 图像

概述	
产品名称	Anti-beta 1 Adrenergic Receptor抗体
描述	兔多克隆抗体to beta 1 Adrenergic Receptor
宿主	Rabbit
特异性	From Jan 2024, QC testing of replenishment batches of this polyclonal changed. All tested and expected application and reactive species combinations are still covered by our Abcam product promise. However, we no longer test all applications. For more information on a specific batch, please contact our Scientific Support who will be happy to help.
经测试应用	适用于: ICC/IF, WB
种属反应性	与反应: Mouse, Human 预测可用于: Sheep, Cow, Cat, Pig 
免疫原	Synthetic peptide corresponding to Mouse beta 1 Adrenergic Receptor aa 150-250 conjugated to keyhole limpet haemocyanin. (Peptide available as <a href="#">ab97424</a> )
阳性对照	This antibody gave a positive signal in Mouse Spinal cord tissue lysate. ICC/IF: THP-1 cells
常规说明	<p>The Life Science industry has been in the grips of a reproducibility crisis for a number of years. Abcam is leading the way in addressing this with our range of recombinant monoclonal antibodies and knockout edited cell lines for gold-standard validation. Please check that this product meets your needs before purchasing.</p> <p>If you have any questions, special requirements or concerns, please send us an inquiry and/or contact our Support team ahead of purchase. Recommended alternatives for this product can be found below, along with publications, customer reviews and Q&amp;As</p>
性能	
形式	Liquid
存放说明	Shipped at 4°C. Store at +4°C short term (1-2 weeks). Upon delivery aliquot. Store at -20°C or -80°C. Avoid freeze / thaw cycle.
存储溶液	pH: 7.40 Preservative: 0.02% Sodium azide Constituent: PBS

Batches of this product that have a concentration < 1mg/ml may have BSA added as a stabilising agent. If you would like information about the formulation of a specific lot, please contact our scientific support team who will be happy to help.

纯度	Immunogen affinity purified
克隆	多克隆
同种型	IgG

## 应用

**The Abpromise guarantee** Abpromise™ 承诺保证使用ab85037于以下的经测试应用

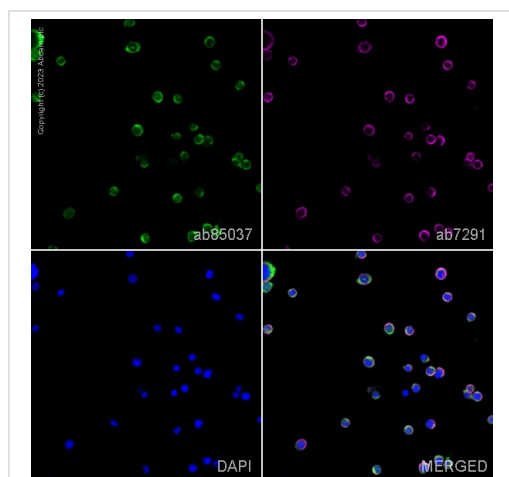
“应用说明”部分 下显示的仅为推荐的起始稀释度;实际最佳的稀释度/浓度应由使用者检定。

应用	Ab评论	说明
ICC/IF	★★★★☆ (1)	Use a concentration of 5 µg/ml.
WB	★★★★☆ (2)	Use a concentration of 1 µg/ml. Detects a band of approximately 55 kDa (predicted molecular weight: 51 kDa).

## 靶标

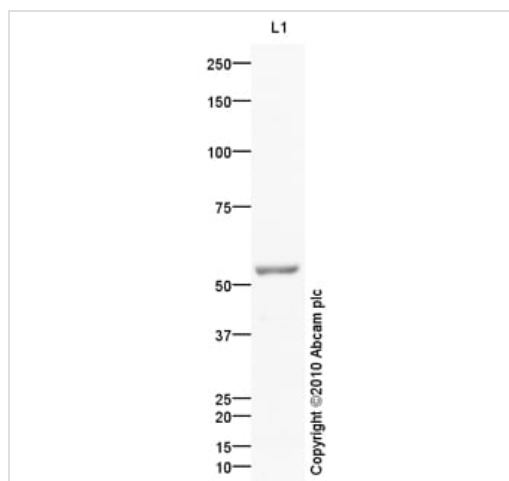
功能	Beta-adrenergic receptors mediate the catecholamine-induced activation of adenylate cyclase through the action of G proteins. This receptor binds epinephrine and norepinephrine with approximately equal affinity.
序列相似性	Belongs to the G-protein coupled receptor 1 family. Adrenergic receptor subfamily. ADRB1 subfamily.
结构域	The PDZ domain-binding motif mediates competitive interactions with GOPC, MAGI3 and DLG4 and plays a role in subcellular location of the receptor.
翻译后修饰	Homologous desensitization of the receptor is mediated by its phosphorylation by beta-adrenergic receptor kinase.
细胞定位	Cell membrane. Localized at the plasma membrane. Found in the Golgi upon GOPC overexpression.

## 图片



Immunocytochemistry/ Immunofluorescence - Anti-beta 1 Adrenergic Receptor antibody (ab85037)

ab85037 staining beta 1 Adrenergic Receptor in THP-1 cells. The cells were fixed with 100% methanol (5 min), permeabilized with 0.1% PBS-Tween for 5 minutes and then blocked with 1% BSA/10% normal goat serum/0.3M glycine in 0.1%PBS-Tween for 1h. The cells were then incubated overnight at 4°C with ab85037 at 5µg/ml and **ab7291**, Mouse monoclonal [DM1A] to alpha Tubulin - Loading Control. Cells were then incubated with **ab150081**, Goat polyclonal Secondary Antibody to Rabbit IgG - H&L (Alexa Fluor® 488), pre-adsorbed at 1/1000 dilution (shown in green) and **ab150120**, Goat polyclonal Secondary Antibody to Mouse IgG - H&L (Alexa Fluor® 594), pre-adsorbed at 1/1000 dilution (shown in pseudocolour magenta). Nuclear DNA was labelled with DAPI (shown in blue). Image was acquired with a confocal microscope (Leica-Microsystems TCS SP8) and a single confocal section is shown.



Western blot - Anti-beta 1 Adrenergic Receptor antibody (ab85037)

Anti-beta 1 Adrenergic Receptor antibody (ab85037) at 1 µg/ml + Spinal Cord (Mouse) Tissue Lysate at 10 µg

### Secondary

Goat polyclonal to Rabbit IgG - H&L - Pre-Adsorbed at 1/3000 dilution

Developed using the ECL technique.

Performed under reducing conditions.

**Predicted band size:** 51 kDa

**Observed band size:** 55 kDa

**Exposure time:** 20 minutes

Mouse Beta-1 adrenergic receptor contains a potential

glycosylation site (SwissProt) which may explain its migration at a higher molecular weight than predicted.

**Please note:** All products are "FOR RESEARCH USE ONLY. NOT FOR USE IN DIAGNOSTIC PROCEDURES"

#### **Our Abpromise to you: Quality guaranteed and expert technical support**

---

- Replacement or refund for products not performing as stated on the datasheet
- Valid for 12 months from date of delivery
- Response to your inquiry within 24 hours
- We provide support in Chinese, English, French, German, Japanese and Spanish
- Extensive multi-media technical resources to help you
- We investigate all quality concerns to ensure our products perform to the highest standards

If the product does not perform as described on this datasheet, we will offer a refund or replacement. For full details of the Abpromise, please visit <https://www.abcam.cn/abpromise> or contact our technical team.

#### **Terms and conditions**

---

- Guarantee only valid for products bought direct from Abcam or one of our authorized distributors