

### Anti-Beclin 1 antibody [EPR20473] ab210498

**重组** RabMAb

**105 References**   [10 图像](#)

#### 概述

产品名称	Anti-Beclin 1抗体[EPR20473]
描述	兔单克隆抗体[EPR20473] to Beclin 1
宿主	Rabbit
特异性	We don't recommend this antibody for mouse and rat in IHC. In our hands most mouse and rat tissues showed nuclear staining.
经测试应用	<b>适用于:</b> IP, IHC-P, WB <b>不适用于:</b> Flow Cyt
种属反应性	<b>与反应:</b> Mouse, Rat, Human
免疫原	Recombinant fragment. This information is proprietary to Abcam and/or its suppliers.
阳性对照	WB: HeLa, HepG2, HEK-293, T-47D, Raji, RAW 264.7, NIH/3T3, A20 and C2C12 whole cell lysates; Human fetal brain and colon lysates; Mouse brain and spleen lysates; Rat brain, kidney and spleen lysates. IHC-P: Human kidney and breast cancer tissues. IP: HepG2 whole cell lysate.
常规说明	This product is a recombinant monoclonal antibody, which offers several advantages including: <ul style="list-style-type: none"> <li>- High batch-to-batch consistency and reproducibility</li> <li>- Improved sensitivity and specificity</li> <li>- Long-term security of supply</li> <li>- Animal-free production</li> </ul> For more information <a href="#">see here</a> . Our RabMAb <sup>®</sup> technology is a patented hybridoma-based technology for making rabbit monoclonal antibodies. For details on our patents, please refer to <a href="#">RabMAb<sup>®</sup> patents</a> .

#### 性能

形式	Liquid
存放说明	Shipped at 4°C. Store at +4°C short term (1-2 weeks). Upon delivery aliquot. Store at -20°C long term. Avoid freeze / thaw cycle.
存储溶液	pH: 7.2 Preservative: 0.01% Sodium azide Constituents: 59% PBS, 40% Glycerol, 0.05% BSA
纯度	Protein A purified

克隆	单克隆
克隆编号	EPR20473
同种型	IgG

## 应用

**The Abpromise guarantee**      **Abpromise™承诺保证使用ab210498于以下的经测试应用**

“应用说明”部分下显示的仅为推荐的起始稀释度;实际最佳的稀释度/浓度应由使用者检定。

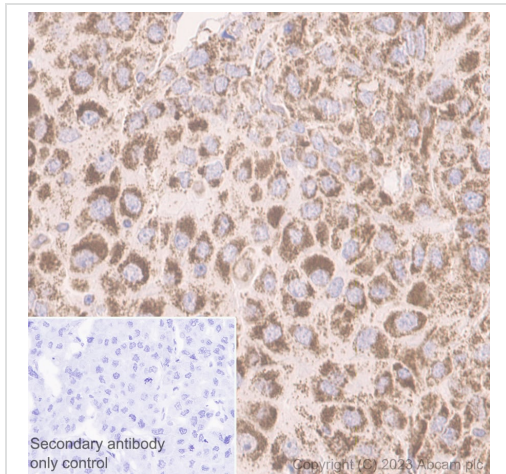
应用	Ab评论	说明
IP		1/30.
IHC-P		1/100. Perform heat mediated antigen retrieval with Tris/EDTA buffer pH 9.0 before commencing with IHC staining protocol.
WB		1/1000. Detects a band of approximately 52 kDa (predicted molecular weight: 52 kDa).

**应用说明** Is unsuitable for Flow Cyt.

## 靶标

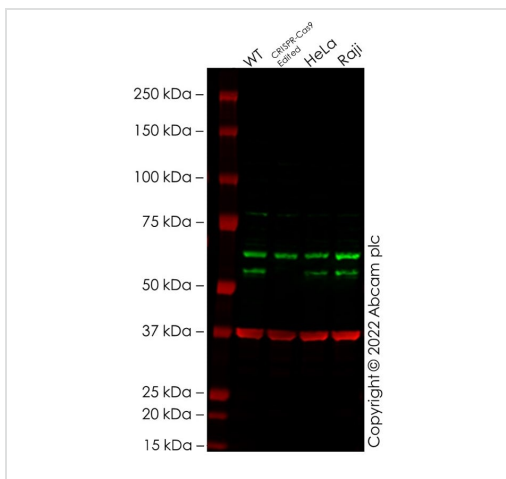
<b>功能</b>	Plays a central role in autophagy (By similarity). May play a role in antiviral host defense. Protects against infection by a neurovirulent strain of Sindbis virus.
<b>组织特异性</b>	Ubiquitous.
<b>序列相似性</b>	Belongs to the beclin family.
<b>细胞定位</b>	Golgi apparatus > trans-Golgi network membrane. Interaction with ATG14 promotes translocation to autophagosomes. Expressed in dendrites and cell bodies of cerebellar Purkinje cells.

图片



Immunohistochemistry (Formalin/PFA-fixed paraffin-embedded sections) - Anti-Beclin 1 antibody [EPR20473] (ab210498)

Immunohistochemistry analysis of paraffin embedded sections of human hepatocellular carcinoma tissue staining Beclin 1 with ab210498 at 1/100 dilution and ready to use secondary Goat Anti-Rabbit IgG H&L (HRP polymer) ([ab214880](#)). Counterstained with hematoxylin. Heat mediated antigen retrieval was performed using [ab93684](#) (Tris/EDTA buffer, pH 9.0). Positive staining on human hepatocellular carcinoma. The section was incubated with ab210498 at 4°C overnight.



Western blot - Anti-Beclin 1 antibody [EPR20473] (ab210498)

**All lanes :** Anti-Beclin 1 antibody [EPR20473] (ab210498) at 1/1000 dilution

**Lane 1 :** Wild-type Jurkat cell lysate

**Lane 2 :** BECN1 CRISPR-Cas9 edited Jurkat cell lysate

**Lane 3 :** HeLa cell lysate

**Lane 4 :** Raji cell lysate

Lysates/proteins at 20 µg per lane.

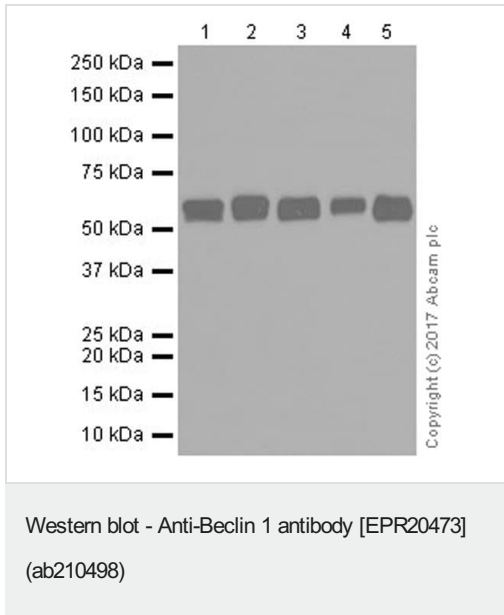
Performed under reducing conditions.

**Predicted band size:** 52 kDa

**Observed band size:** 52 kDa

False colour image of Western blot: Anti-Beclin 1 antibody [EPR20473] staining at 1/1000 dilution, shown in green; Mouse anti-GAPDH antibody [6C5] ([ab8245](#)) loading control staining at 1/20000 dilution, shown in red. In Western blot, ab210498 was shown to bind specifically to Beclin 1. A band was observed at 52 kDa in wild-type Jurkat cell lysates with no signal observed at this size in BECN1 CRISPR-Cas9 edited cell line [ab283778](#) (BECN1 CRISPR-Cas9 edited cell lysate [ab283792](#)). The band observed in the CRISPR-Cas9 edited lysate lane above 52 kDa is likely to represent Beclin 1 with an insertion. This has not been investigated further and the functional properties of the gene product have not been determined. To generate this image, wild-type and BECN1

CRISPR-Cas9 edited Jurkat cell lysates were analysed. First, samples were run on an SDS-PAGE gel then transferred onto a nitrocellulose membrane. Membranes were blocked in 3 % milk in TBS-0.1 % Tween<sup>®</sup> 20 (TBS-T) before incubation with primary antibodies overnight at 4 °C. Blots were washed four times in TBS-T, incubated with secondary antibodies for 1 h at room temperature, washed again four times then imaged. Secondary antibodies used were Goat anti-Rabbit IgG H&L 800CW and Goat anti-Mouse IgG H&L 680RD at 1/20000 dilution.



**All lanes :** Anti-Beclin 1 antibody [EPR20473] (ab210498) at 1/1000 dilution

**Lane 1 :** HeLa (Human epithelial cell line from cervix adenocarcinoma) whole cell lysate

**Lane 2 :** HepG2 (Human liver hepatocellular carcinoma cell line) whole cell lysate

**Lane 3 :** HEK-293 (Human epithelial cell line from embryonic kidney) whole cell lysate

**Lane 4 :** T-47D (Human ductal breast epithelial tumor cell line) whole cell lysate

**Lane 5 :** Raji (Human Burkitt's lymphoma cell line) whole cell lysate

Lysates/proteins at 20 µg per lane.

### Secondary

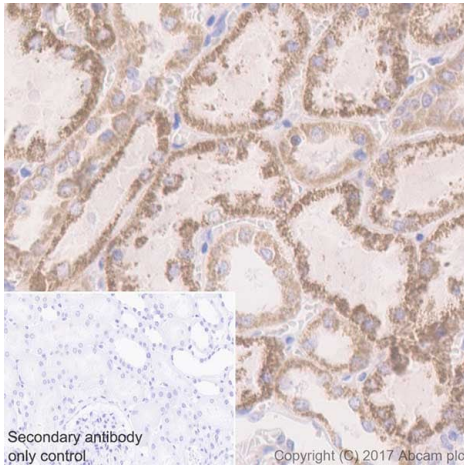
**All lanes :** Goat Anti-Rabbit IgG H&L (HRP) (**ab97051**) at 1/100000 dilution

**Predicted band size:** 52 kDa

**Observed band size:** 52 kDa

**Exposure time:** 15 seconds

Blocking/Dilution buffer: 5% NFDM/TBST.



Immunohistochemistry (Formalin/PFA-fixed paraffin-embedded sections) - Anti-Beclin 1 antibody [EPR20473] (ab210498)

Immunohistochemical analysis of paraffin-embedded human kidney tissue labeling Beclin 1 with ab210498 at 1/100 dilution, followed by Goat Anti-Rabbit IgG H&L (HRP) Ready to use.

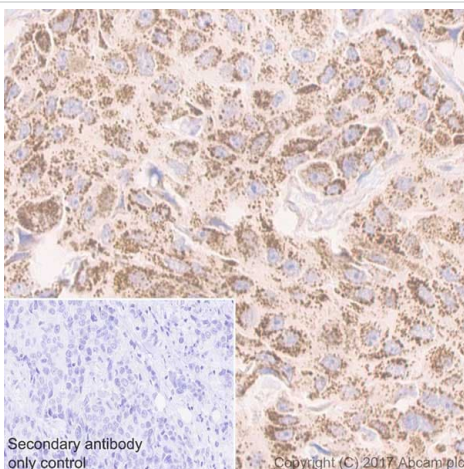
Granularly cytoplasmic staining on human kidney is observed.

Counter stained with Hematoxylin.

Secondary antibody only control: Used PBS instead of primary antibody, secondary antibody is Goat Anti-Rabbit IgG H&L (HRP) Ready to use.

We don't recommend this antibody for mouse and rat in IHC. In our hands most mouse and rat tissues showed nuclear staining.

Perform heat mediated antigen retrieval with Tris/EDTA buffer pH 9.0 before commencing with IHC staining protocol.



Immunohistochemistry (Formalin/PFA-fixed paraffin-embedded sections) - Anti-Beclin 1 antibody [EPR20473] (ab210498)

Immunohistochemical analysis of paraffin-embedded human breast cancer tissue labeling Beclin 1 with ab210498 at 1/100 dilution, followed by Goat Anti-Rabbit IgG H&L (HRP) Ready to use.

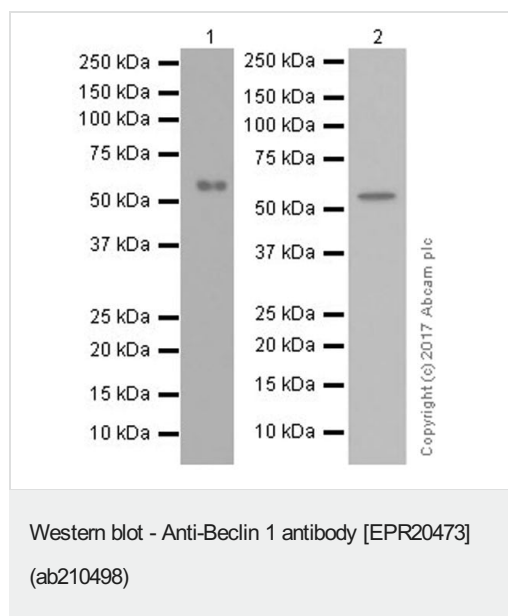
Granularly cytoplasmic staining on tumor cells of human breast cancer is observed.

Counter stained with Hematoxylin.

Secondary antibody only control: Used PBS instead of primary antibody, secondary antibody is Goat Anti-Rabbit IgG H&L (HRP) Ready to use.

We don't recommend this antibody for mouse and rat in IHC. In our hands most mouse and rat tissues showed nuclear staining.

Perform heat mediated antigen retrieval with Tris/EDTA buffer pH 9.0 before commencing with IHC staining protocol.



**All lanes :** Anti-Beclin 1 antibody [EPR20473] (ab210498) at 1/1000 dilution

**Lane 1 :** Human fetal brain lysate

**Lane 2 :** Human colon lysate

Lysates/proteins at 10 µg per lane.

### Secondary

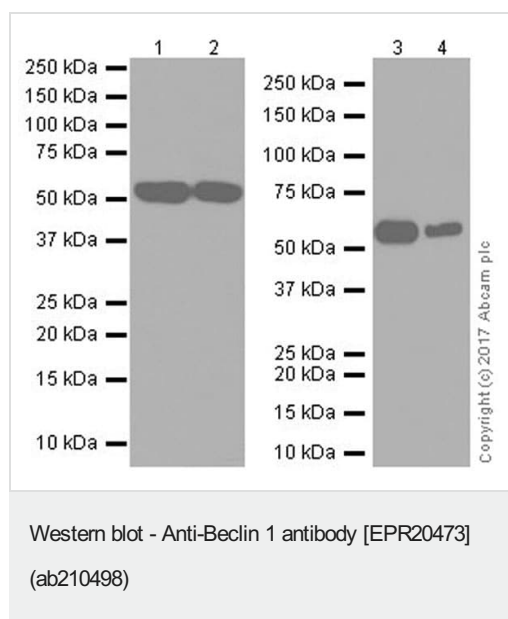
**All lanes :** VeriBlot for IP Detection Reagent (HRP) ([ab131366](#)) at 1/4000 dilution

**Predicted band size:** 52 kDa

**Observed band size:** 52 kDa

**Exposure time:** 3 minutes

Blocking/Dilution buffer: 5% NFDM/TBST.



**All lanes :** Anti-Beclin 1 antibody [EPR20473] (ab210498) at 1/1000 dilution

**Lane 1 :** RAW 264.7 (Mouse macrophage cell line transformed with Abelson murine leukemia virus) whole cell lysate at 10 µg

**Lane 2 :** NIH/3T3 (Mouse embryonic fibroblast cell line) whole cell lysate at 10 µg

**Lane 3 :** A20 (Mouse reticulum sarcoma cell line) whole cell lysate at 10 µg

**Lane 4 :** C2C12 (Mouse myoblast cell line) whole cell lysate

### Secondary

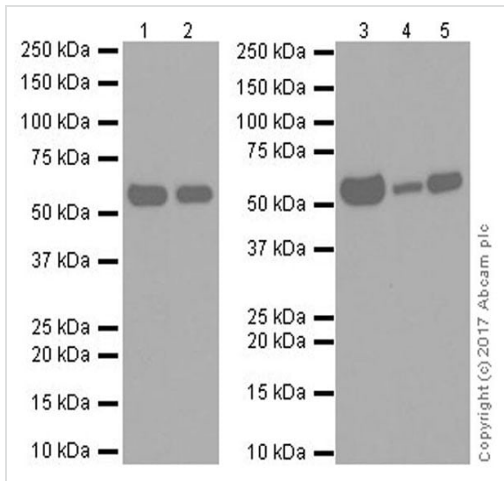
**All lanes :** Goat Anti-Rabbit IgG H&L (HRP) ([ab97051](#)) at 1/100000 dilution

**Predicted band size:** 52 kDa

**Observed band size:** 52 kDa

**Exposure time:** 1 minute

Blocking/Dilution buffer: 5% NFDM/TBST.



Western blot - Anti-Beclin 1 antibody [EPR20473] (ab210498)

**All lanes :** Anti-Beclin 1 antibody [EPR20473] (ab210498) at 1/1000 dilution

**Lane 1 :** Mouse brain lysate

**Lane 2 :** Mouse spleen lysate

**Lane 3 :** Rat brain lysate

**Lane 4 :** Rat kidney lysate

**Lane 5 :** Rat spleen lysate

Lysates/proteins at 10 µg per lane.

#### Secondary

**All lanes :** Goat Anti-Rabbit IgG H&L (HRP) ([ab97051](#)) at 1/100000 dilution

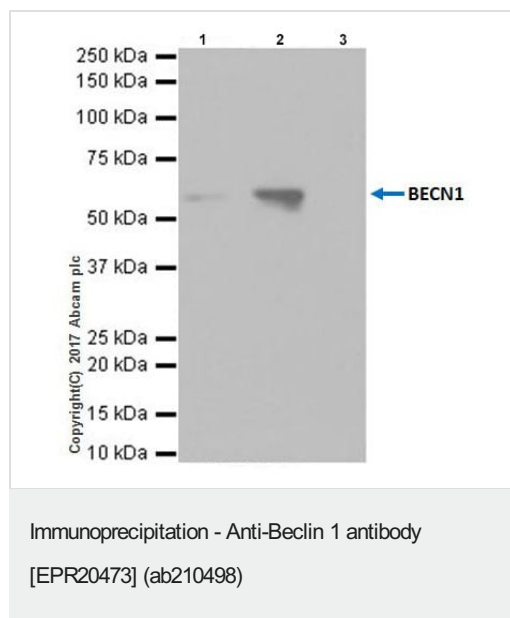
**Predicted band size:** 52 kDa

**Observed band size:** 52 kDa

**Exposure time:** 3 minutes

Blocking/Dilution buffer: 5% NFDM/TBST.





Beclin 1 was immunoprecipitated from 0.35 mg of HepG2 (Human liver hepatocellular carcinoma cell line) whole cell lysate with ab210498 at 1/30 dilution.

Western blot was performed from the immunoprecipitate using ab210498 at 1/1000 dilution.

VeriBlot for IP Detection Reagent (HRP) (**ab131366**), was used for detection at 1/10000 dilution.

Lane 1: HepG2 whole cell lysate, 10 µg (Input).

Lane 2: ab210498 IP in HepG2 whole cell lysate.

Lane 3: Rabbit monoclonal IgG (**ab172730**) instead of ab210498 in HepG2 whole cell lysate.

Blocking and dilution buffer and concentration: 5% NFDM/TBST.

Exposure time: 30 seconds.

Why choose a recombinant antibody?

<p><b>Research with confidence</b> Consistent and reproducible results</p>	<p><b>Long-term and scalable supply</b> Recombinant technology</p>
<p><b>Success from the first experiment</b> Confirmed specificity</p>	<p><b>Ethical standards compliant</b> Animal-free production</p>

Anti-Beclin 1 antibody [EPR20473] (ab210498)

**Please note:** All products are "FOR RESEARCH USE ONLY. NOT FOR USE IN DIAGNOSTIC PROCEDURES"

### Our Abpromise to you: Quality guaranteed and expert technical support

- Replacement or refund for products not performing as stated on the datasheet
- Valid for 12 months from date of delivery
- Response to your inquiry within 24 hours
- We provide support in Chinese, English, French, German, Japanese and Spanish
- Extensive multi-media technical resources to help you
- We investigate all quality concerns to ensure our products perform to the highest standards

If the product does not perform as described on this datasheet, we will offer a refund or replacement. For full details of the Abpromise, please visit <https://www.abcam.cn/abpromise> or contact our technical team.



## Terms and conditions

---

- Guarantee only valid for products bought direct from Abcam or one of our authorized distributors