

Anti-Bcr-abl antibody [7C6] ab187831

重组

8 References **3 图像**

概述

产品名称	Anti-Bcr-abl抗体[7C6]
描述	小鼠单克隆抗体[7C6] to Bcr-abl
宿主	Mouse
特异性	This antibody recognizes an epitope within the amino acid sequence SSINEITPRRQS of Bcr/Abl.
经测试应用	适用于: ICC/IF, WB 不适用于: IHC-P or IP
种属反应性	与反应: Human
免疫原	Synthetic peptide. This information is proprietary to Abcam and/or its suppliers.
表位	Cells from immunized Balb/c mice were fused with the P3X63Ag8 myeloma cell line.
阳性对照	WB: K562 whole cell lysate. ICC/IF: K562 cells.
常规说明	This product has switched from a hybridoma to recombinant production method on 08 th March 2021. This product is a recombinant monoclonal antibody, which offers several advantages including: - High batch-to-batch consistency and reproducibility - Improved sensitivity and specificity - Long-term security of supply - Animal-free production For more information see here .

性能

形式	Liquid
存放说明	Shipped at 4°C. Store at +4°C short term (1-2 weeks). Upon delivery aliquot. Store at -20°C long term. Avoid freeze / thaw cycle.
存储溶液	Preservative: 0.01% Sodium azide Constituents: 59% PBS, 0.05% BSA, 40% Glycerol (glycerin, glycerine)
纯度	Protein A purified
克隆	单克隆

克隆编号	7C6
骨髓瘤	P3-x63-Ag8
同种型	IgG2a

应用

The Abpromise guarantee

Abpromise™承诺保证使用ab187831于以下的经测试应用

“应用说明”部分 下显示的仅为推荐的起始稀释度;实际最佳的稀释度/浓度应由使用者检定。

应用	Ab评论	说明
ICC/IF		1/250.
WB		1/1000. Predicted molecular weight: 197 kDa.

应用说明

Is unsuitable for IHC-P or IP.

靶标

相关性

The BCR gene is involved in the 9:22 translocation that generates the Philadelphia chromosome both in chronic myeloid leukemia (CML) and in a proportion of cases of acute lymphocytic leukemia (ALL). A 5' bcr sequence becomes fused to an abl sequence (including tyrosine kinase domain sequences) from chromosome 9 and results in the production of a chimaeric BCR-ABL protein with enhanced kinase activity. These antibodies may be useful for studies of the oncogene and have potential diagnostic and prognostic applications.

图片

Immunocytochemistry/ Immunofluorescence - Anti-Bcr-abl antibody [7C6] (ab187831)

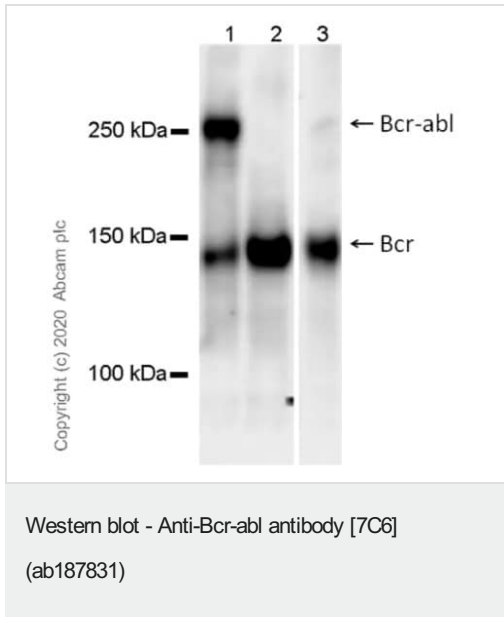
Immunofluorescent analysis of 4% paraformaldehyde-fixed, 0.1% Triton X-100 fixed K562 (human chronic myelogenous leukemia lymphoblast) cells labeling Bcr-abl with ab187831 at 1/250 dilution, followed by [ab150113](#) Goat Anti-Mouse IgG H&L (Alexa Fluor® 488) secondary antibody at 1/1000 dilution (Green). Confocal image showing strongly cytoplasmic staining in K-562 cell line. The nuclear counter stain id DAPI (Blue). Tubulin is detected using [ab179513](#) Anti-beta Tubulin rabbit monoclonal antibody at 1/200 dilution, followed by [ab150080](#) Goat Anti-Rabbit IgG H&L (Alexa Fluor® 594) at 1/500 dilution (Red).

The negative controls are as follows:

-ve control 1: ab187831 at 1/250 dilution, followed by [ab150080](#) Goat Anti-Rabbit IgG H&L (Alexa Fluor® 594) secondary at 1/500 dilution.

-ve control 2: Primary ([ab179513](#)) at 1/200 dilution, followed by [ab150113](#) Goat Anti-Mouse IgG H&L (Alexa Fluor® 488) secondary

at 1/1000 dilution.



All lanes : Anti-Bcr-abl antibody [7C6] (ab187831) at 1/1000 dilution

Lane 1 : K562 (human chronic myelogenous leukemia lymphoblast), whole cell lysate

Lane 2 : Jurkat (human T cell leukemia T lymphocyte), whole cell lysate

Lane 3 : HEK-293 (human embryonic kidney epithelial cell), whole cell lysate

Lysates/proteins at 10 µg per lane.

Secondary

All lanes : Goat anti-Mouse IgG (H+L), Peroxidase conjugated at 1/10000 dilution

Predicted band size: 197 kDa





Observed band size: 142,210 kDa

Blocking and diluting buffer and concentration: 5% NFDM/TBST

Lysates should be non-boiled as boiling may cause protein aggregates.

Exposure time: 59 seconds

Why choose a recombinant antibody?

 <p>Research with confidence Consistent and reproducible results</p>	 <p>Long-term and scalable supply Recombinant technology</p>
 <p>Success from the first experiment Confirmed specificity</p>	 <p>Ethical standards compliant Animal-free production</p>

Anti-Bcr-abl antibody [7C6] (ab187831)

Please note: All products are "FOR RESEARCH USE ONLY. NOT FOR USE IN DIAGNOSTIC PROCEDURES"

Our Abpromise to you: Quality guaranteed and expert technical support

- Replacement or refund for products not performing as stated on the datasheet
- Valid for 12 months from date of delivery
- Response to your inquiry within 24 hours

- We provide support in Chinese, English, French, German, Japanese and Spanish
- Extensive multi-media technical resources to help you
- We investigate all quality concerns to ensure our products perform to the highest standards

If the product does not perform as described on this datasheet, we will offer a refund or replacement. For full details of the Abpromise, please visit <https://www.abcam.cn/abpromise> or contact our technical team.

Terms and conditions

- Guarantee only valid for products bought direct from Abcam or one of our authorized distributors