


Anti-BCL9 antibody ab37305

★★★★★ 2 Abreviews 20 References 2 图像

概述	
产品名称	Anti-BCL9抗体
描述	兔多克隆抗体to BCL9
宿主	Rabbit
特异性	From Jan 2024, QC testing of replenishment batches of this polyclonal changed. All tested and expected application and reactive species combinations are still covered by our Abcam product promise. However, we no longer test all applications. For more information on a specific batch, please contact our Scientific Support who will be happy to help.
经测试应用	适用于: WB, ICC/IF
种属反应性	与反应: Human 预测可用于: Mouse 
免疫原	Synthetic peptide corresponding to Human BCL9 aa 800-900 conjugated to keyhole limpet haemocyanin. (Peptide available as ab37304)
常规说明	<p>The Life Science industry has been in the grips of a reproducibility crisis for a number of years. Abcam is leading the way in addressing this with our range of recombinant monoclonal antibodies and knockout edited cell lines for gold-standard validation. Please check that this product meets your needs before purchasing.</p> <p>If you have any questions, special requirements or concerns, please send us an inquiry and/or contact our Support team ahead of purchase. Recommended alternatives for this product can be found below, along with publications, customer reviews and Q&As</p>
性能	
形式	Liquid
存放说明	Shipped at 4°C. Store at +4°C short term (1-2 weeks). Upon delivery aliquot. Store at -20°C or -80°C. Avoid freeze / thaw cycle.
存储溶液	pH: 7.40 Preservative: 0.02% Sodium azide Constituent: PBS
Batches of this product that have a concentration < 1mg/ml may have BSA added as a stabilising agent. If you would like information about the formulation of a specific lot, please contact our	

scientific support team who will be happy to help.

纯度	Immunogen affinity purified
克隆	多克隆
同种型	IgG

应用

The Abpromise guarantee Abpromise™ 承诺保证使用ab37305于以下的经测试应用

“应用说明”部分 下显示的仅为推荐的起始稀释度;实际最佳的稀释度/浓度应由使用者检定。

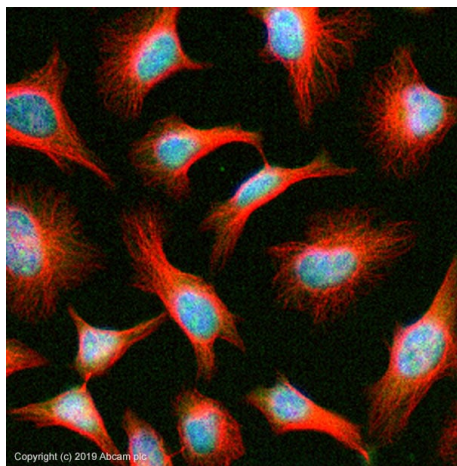
应用	Ab评论	说明
WB	★★★★★ (1)	Use a concentration of 2 µg/ml. Detects a band of approximately 180 kDa (predicted molecular weight: 140 kDa). Can be blocked with Human BCL9 peptide (ab37304) .
ICC/IF		Use a concentration of 1 µg/ml.

靶标

相关性 BCL9 is involved in signal transduction through the Wnt pathway. It promotes beta-catenin's transcriptional activity. BCL9 is associated with B-cell acute lymphoblastic leukemia. The overexpression of BCL9 may be of pathogenic significance in B-cell malignancies (referenced from swissprot and entrez gene).

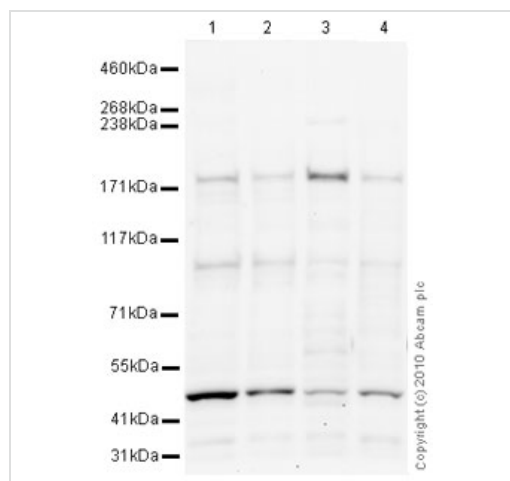
细胞定位 Nuclear

图片



Immunocytochemistry/ Immunofluorescence - Anti-BCL9 antibody (ab37305)

ab37305 stained in HeLa cells. Cells were fixed with 100% methanol (5 min) at room temperature and incubated with PBS containing 10% goat serum, 0.3 M glycine, 1% BSA and 0.1% Triton for 1h at room temperature to permeabilise the cells and block non-specific protein-protein interactions. The cells were then incubated with the antibody ab37305 at 5µg/ml and **ab7291** (Mouse monoclonal to alpha Tubulin - Loading Control) used at a 1/1000 dilution overnight at +4°C. The secondary antibodies were **ab150081**, Goat Anti-Rabbit IgG H&L (Alexa Fluor® 488) preadsorbed, (pseudo-colored green) and **ab150120**, Goat polyclonal Secondary Antibody to Mouse IgG - H&L (Alexa Fluor® 594) preadsorbed, (colored red), both used at a 1/1000 dilution for 1 hour at room temperature. DAPI was used to stain the cell nuclei (colored blue) at a concentration of 1.43 µM for 1 hour at room temperature.



Western blot - Anti-BCL9 antibody (ab37305)

All lanes : Anti-BCL9 antibody (ab37305) at 2 µg/ml

Lane 1 : HeLa (Human epithelial carcinoma cell line) Nuclear Lysate

Lane 2 : Jurkat nuclear extract lysate (**ab14844**)

Lane 3 : MCF7 (Human breast adenocarcinoma cell line) Nuclear Lysate

Lane 4 : Ramos (Human Burkitt's lymphoma cell line) Whole Cell Lysate

Lysates/proteins at 20 µg per lane.

Secondary

All lanes : Goat polyclonal to Rabbit IgG - H&L - Pre-Adsorbed (HRP) at 1/3000 dilution

Performed under reducing conditions.

Predicted band size: 140 kDa

Observed band size: 180 kDa

Additional bands at: 100 kDa, 47 kDa. We are unsure as to the identity of these extra bands.

Exposure time: 20 minutes

Please note: All products are "FOR RESEARCH USE ONLY. NOT FOR USE IN DIAGNOSTIC PROCEDURES"

Our Abpromise to you: Quality guaranteed and expert technical support

- Replacement or refund for products not performing as stated on the datasheet
- Valid for 12 months from date of delivery
- Response to your inquiry within 24 hours
- We provide support in Chinese, English, French, German, Japanese and Spanish
- Extensive multi-media technical resources to help you
- We investigate all quality concerns to ensure our products perform to the highest standards

If the product does not perform as described on this datasheet, we will offer a refund or replacement. For full details of the Abpromise, please visit <https://www.abcam.cn/abpromise> or contact our technical team.

Terms and conditions

- Guarantee only valid for products bought direct from Abcam or one of our authorized distributors