

### Anti-Bcl6 antibody [EP529Y] ab33901

敲除验证
重组
RabMAb

★★★★☆
2 Abreviews
8 References
6 图像

#### 概述

产品名称	Anti-Bcl6抗体[EP529Y]
描述	兔单克隆抗体[EP529Y] to Bcl6
宿主	Rabbit
经测试应用	适用于: IP, WB
种属反应性	与反应: Human
免疫原	Synthetic peptide within Human Bcl6 aa 650-750 (C terminal). The exact sequence is proprietary.
阳性对照	WB: Daudi and Ramos, HeLa and SH-SY5Y cell lysates. IP: Ramos cell lysate.
常规说明	<p>This product is a recombinant monoclonal antibody, which offers several advantages including:</p> <ul style="list-style-type: none"> <li>- High batch-to-batch consistency and reproducibility</li> <li>- Improved sensitivity and specificity</li> <li>- Long-term security of supply</li> <li>- Animal-free production</li> </ul> <p>For more information <a href="#">see here</a>.</p> <p>Our RabMAb<sup>®</sup> technology is a patented hybridoma-based technology for making rabbit monoclonal antibodies. For details on our patents, please refer to <a href="#">RabMAb<sup>®</sup> patents</a>.</p> <p>Mouse, Rat: We have preliminary internal testing data to indicate this antibody may not react with these species. Please contact us for more information.</p>

#### 性能

形式	Liquid
存放说明	Shipped at 4°C. Upon delivery aliquot and store at -20°C. Avoid freeze / thaw cycles.
存储溶液	<p>pH: 7.20</p> <p>Preservative: 0.01% Sodium azide</p> <p>Constituents: PBS, 40% Glycerol (glycerin, glycerine), 0.05% BSA</p>
纯度	Protein A purified
克隆	单克隆
克隆编号	EP529Y
同种型	IgG

## 应用

**The Abpromise guarantee** Abpromise™ 承诺保证使用ab33901于以下的经测试应用

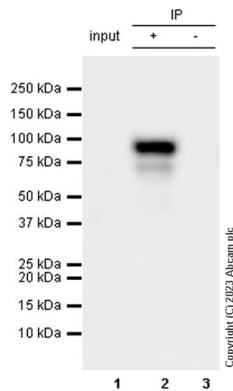
“应用说明”部分 下显示的仅为推荐的起始稀释度;实际最佳的稀释度/浓度应由使用者检定。

应用	Ab评论	说明
IP		Use at an assay dependent concentration.
WB		1/500 - 1/2000. Detects a band of approximately 85-90 kDa (predicted molecular weight: 78 kDa).

## 靶标

功能	Transcriptional repressor which is required for germinal center formation and antibody affinity maturation. Probably plays an important role in lymphomagenesis.
组织特异性	Expressed in germinal center T and B cells and in primary immature dendritic cells.
疾病相关	Note=Chromosomal aberrations involving BCL6 may be a cause of B-cell non-Hodgkin lymphoma. Translocation t(3;14)(q27;q32); translocation t(3;22)(q27;q11) with immunoglobulin gene regions. Note=A chromosomal aberration involving BCL6 may be a cause of a form of B-cell leukemia. Translocation t(3;11)(q27;q23) with POU2AF1/OBF1. Note=A chromosomal aberration involving BCL6 may be a cause of lymphoma. Translocation t(3;4)(q27;p11) with ARHH/TTF.
序列相似性	Contains 1 BTB (POZ) domain. Contains 6 C2H2-type zinc fingers.
结构域	The BTB domain mediates homodimerization. Its dimer interface mediates peptide binding such as to corepressors BCOR and NCOR2.
翻译后修饰	Phosphorylated by MAPK1 in response to antigen receptor activation. Phosphorylation induces its degradation by ubiquitin/proteasome pathway.
细胞定位	Nucleus.

## 图片



Immunoprecipitation - Anti-Bcl6 antibody [EP529Y]  
(ab33901)

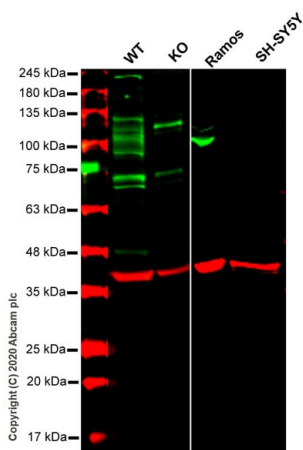
Bcl6 was immunoprecipitated from Ramos (human Burkitt's lymphoma B lymphocyte), whole cell lysate with ab33901 at 1/30 dilution (2µg in 0.35mg lysates). Western blot was performed on the immunoprecipitate using ab33901 at 1/1000 dilution. VeriBlot for IP Detection Reagent (HRP)([ab131366](#)) was used at 1/5000 dilution.

**Lane 1 (Input):** Ramos (human Burkitt's lymphoma B lymphocyte), whole cell lysate, 10 µg

**Lane 2 (+):** Ramos whole cell lysate

**Lane 3 (-):** Rabbit monoclonal IgG ([ab172730](#)) instead of ab33901 in Ramos whole cell lysate

Blocking and dilution buffer and concentration: 5% NFDM/TBST.



Western blot - Anti-Bcl6 antibody [EP529Y]  
(ab33901)

**All lanes :** Anti-Bcl6 antibody [EP529Y] (ab33901) at 1/1000 dilution

**Lane 1 :** Wild-type HeLa cell lysate

**Lane 2 :** BCL6 knockout HeLa cell lysate

**Lane 3 :** Ramos cell lysate

**Lane 4 :** SH-SY5Y cell lysate

Lysates/proteins at 20 µg per lane.

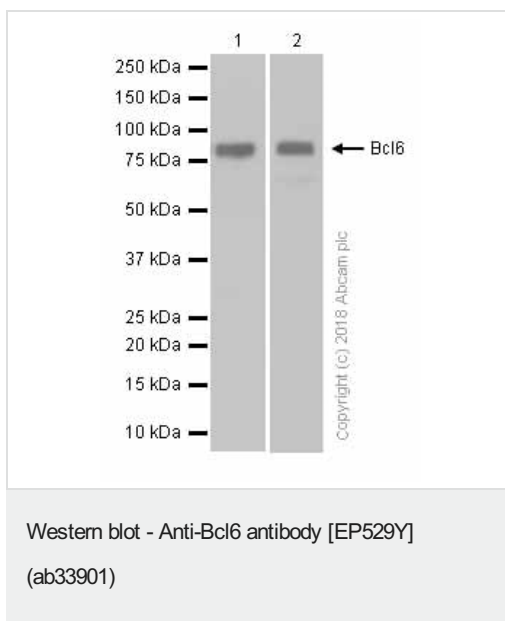
Performed under reducing conditions.

**Predicted band size:** 78 kDa

**Observed band size:** 78 kDa

**Lanes 1-4:** Merged signal (red and green). Green ab33901 observed at 78 kDa. Red - loading control, [ab8245](#) observed at 37 kDa.

ab33901 Anti-Bcl6 antibody [EP529Y] was shown to react with BCL6 in wild-type HeLa cells. Loss of signal was observed when knockout cell line [ab265410](#) (knockout cell lysate [ab257178](#)) was used. Wild-type and Bcl6 knockout samples were subjected to SDS-PAGE. ab33901 and Anti-GAPDH antibody [6C5] - Loading Control ([ab8245](#)) were incubated overnight at 4°C at 1 in 1000 dilution and 1 in 20000 dilution respectively. Blots were developed with Goat anti-Rabbit IgG H&L (IRDye® 800CW) preadsorbed ([ab216773](#)) and Goat anti-Mouse IgG H&L (IRDye® 680RD) preadsorbed ([ab216776](#)) secondary antibodies at 1 in 10000 dilution for 1 hour at room temperature before imaging.



**All lanes :** Anti-Bcl6 antibody [EP529Y] (ab33901) at 1/1000 dilution (Purified)

**Lane 1 :** Daudi (Human Burkitt's lymphoma lymphoblast) whole cell lysates prepared in 1%SDS Hot lysis method

**Lane 2 :** Ramos (Human Burkitt's lymphoma lymphoblast) whole cell lysates prepared in 1%SDS Hot lysis method

Lysates/proteins at 15 µg per lane.

#### Secondary

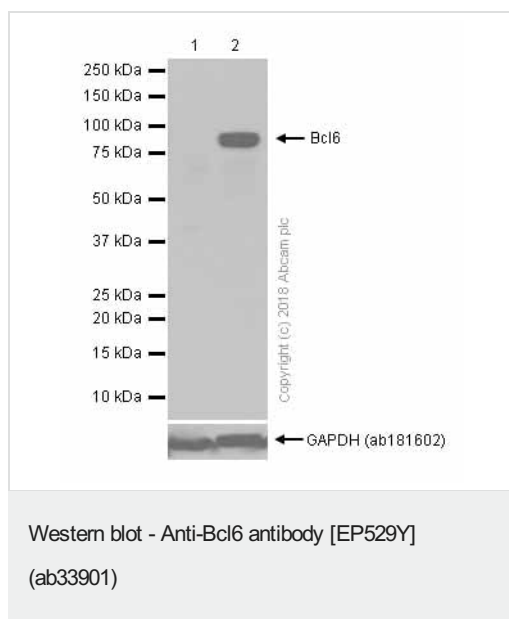
**All lanes :** Goat Anti-Rabbit IgG H&L (HRP) ([ab97051](#)) at 1/20000 dilution

**Predicted band size:** 78 kDa

**Exposure time:** 10 seconds

Blocking and diluting buffer: 5% NFDM/TBST.

This antibody works better in 1%SDS Hot Lysates in WB. For Lysate preparation protocol, please refer to the protocol book in the protocol section and/or [here \(downloadable copy\)](#).



**All lanes :** Anti-Bcl6 antibody [EP529Y] (ab33901) at 1/1000 dilution (Purified)

**Lane 1 :** Daudi (Human Burkitt's lymphoma lymphoblast) whole cell lysates prepared in RIPA lysis method

**Lane 2 :** Daudi (Human Burkitt's lymphoma lymphoblast) whole cell lysates prepared in 1%SDS Hot lysis method

Lysates/proteins at 15 µg per lane.

### Secondary

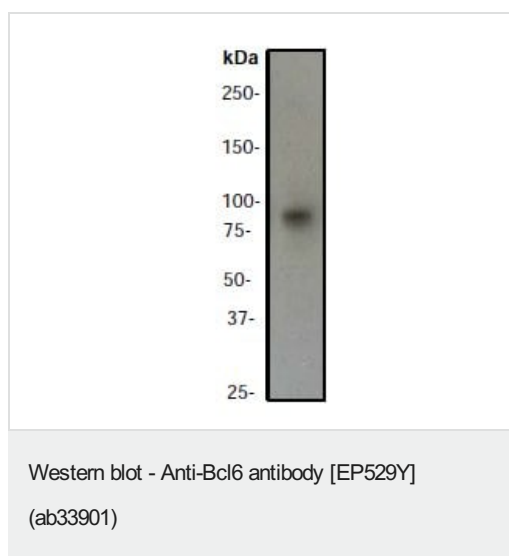
**All lanes :** Goat Anti-Rabbit IgG H&L (HRP) ([ab97051](#)) at 1/20000 dilution

**Predicted band size:** 78 kDa

**Exposure time:** 3 minutes

Blocking and diluting buffer: 5% NFDM/TBST.

This antibody works better in 1%SDS Hot Lysates in WB. For Lysate preparation protocol, please refer to the protocol [here](#) ([downloadable copy](#)).



Anti-Bcl6 antibody [EP529Y] (ab33901) at 1/2000 dilution (Unpurified) + Daudi cell lysate

**Predicted band size:** 78 kDa

**Observed band size:** 85-90 kDa

### Why choose a recombinant antibody?



**Research with confidence**  
Consistent and reproducible results



**Long-term and scalable supply**  
Recombinant technology



**Success from the first experiment**  
Confirmed specificity



**Ethical standards compliant**  
Animal-free production

Anti-Bcl6 antibody [EP529Y] (ab33901)

**Please note:** All products are "FOR RESEARCH USE ONLY. NOT FOR USE IN DIAGNOSTIC PROCEDURES"

### Our Abpromise to you: Quality guaranteed and expert technical support

---

- Replacement or refund for products not performing as stated on the datasheet
- Valid for 12 months from date of delivery
- Response to your inquiry within 24 hours
- We provide support in Chinese, English, French, German, Japanese and Spanish
- Extensive multi-media technical resources to help you
- We investigate all quality concerns to ensure our products perform to the highest standards

If the product does not perform as described on this datasheet, we will offer a refund or replacement. For full details of the Abpromise, please visit <https://www.abcam.cn/abpromise> or contact our technical team.

### Terms and conditions

---

- Guarantee only valid for products bought direct from Abcam or one of our authorized distributors