

Anti-Bcl10 antibody [EPR8587] ab150380

敲除验证
重组
RabMAb

5 图像

概述

产品名称	Anti-Bcl10抗体[EPR8587]
描述	兔单克隆抗体[EPR8587] to Bcl10
宿主	Rabbit
经测试应用	适用于: WB, IHC-P 不适用于: Flow Cyt
种属反应性	与反应: Human
免疫原	Recombinant fragment corresponding to Human Bcl10 aa 1-250.
阳性对照	WB: Recombinant Human Bcl10 protein (ab124575); Ramos, HeLa, HuT-78 and Raji cell lysates. IHC-P: Human MALT and tonsil tissues.
常规说明	<p>This product is a recombinant monoclonal antibody, which offers several advantages including:</p> <ul style="list-style-type: none"> - High batch-to-batch consistency and reproducibility - Improved sensitivity and specificity - Long-term security of supply - Animal-free production <p>For more information see here.</p> <p>Our RabMAb[®] technology is a patented hybridoma-based technology for making rabbit monoclonal antibodies. For details on our patents, please refer to RabMAb[®] patents.</p> <p>Mouse, Rat: We have preliminary internal testing data to indicate this antibody may not react with these species. Please contact us for more information.</p>

性能

形式	Liquid
存放说明	Shipped at 4°C. Upon delivery aliquot and store at -20°C. Avoid repeated freeze / thaw cycles.
存储溶液	pH: 7.2 Preservative: 0.01% Sodium azide Constituents: 9% PBS, 40% Glycerol (glycerin, glycerine), 0.05% BSA, 50% Tissue culture supernatant
纯度	Protein A purified

克隆	单克隆
克隆编号	EPR8587
同种型	IgG

应用

The Abpromise guarantee

Abpromise™承诺保证使用ab150380于以下的经测试应用

“应用说明”部分 下显示的仅为推荐的起始稀释度;实际最佳的稀释度/浓度应由使用者检定。

应用	Ab评论	说明
WB		1/1000 - 1/10000. Predicted molecular weight: 26 kDa.
IHC-P		1/250 - 1/500. Perform heat mediated antigen retrieval with citrate buffer pH 6 before commencing with IHC staining protocol.

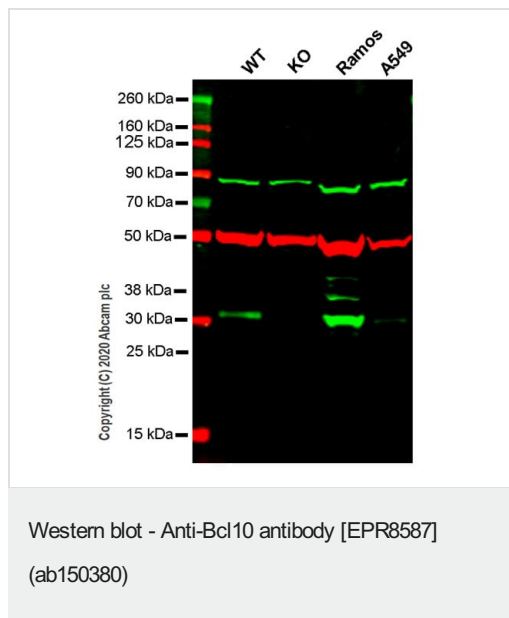
应用说明

Is unsuitable for Flow Cyt.

靶标

功能	Promotes apoptosis, pro-caspase-9 maturation and activation of NF-kappa-B via NIK and IKK. May be an adapter protein between upstream TNFR1-TRADD-RIP complex and the downstream NIK-IKK-IKAP complex. Is a substrate for MALT1.
组织特异性	Ubiquitous.
疾病相关	Note=A chromosomal aberration involving BCL10 is recurrent in low-grade mucosa-associated lymphoid tissue (MALT lymphoma). Translocation t(1;14)(p22;q32). Although the BCL10/IgH translocation leaves the coding region of BCL10 intact, frequent BCL10 mutations could be attributed to the Ig somatic hypermutation mechanism resulting in nucleotide transitions. Note=Defects in BCL10 are involved in various types of cancer.
序列相似性	Contains 1 CARD domain.
翻译后修饰	Phosphorylated. Phosphorylation results in dissociation from TRAF2 and binding to BIRC2/c-IAP2.
细胞定位	Cytoplasm > perinuclear region. Membrane raft. Appears to have a perinuclear, compact and filamentous pattern of expression. Also found in the nucleus of several types of tumor cells. Colocalized with DPP4 in membrane rafts.

图片



All lanes : Anti-Bcl10 antibody [EPR8587] (ab150380) at 1/1000 dilution

Lane 1 : Wild-type HeLa cell lysate

Lane 2 : BCL10 knockout HeLa cell lysate

Lane 3 : Ramos cell lysate

Lane 4 : A549 cell lysate

Lysates/proteins at 20 µg per lane.

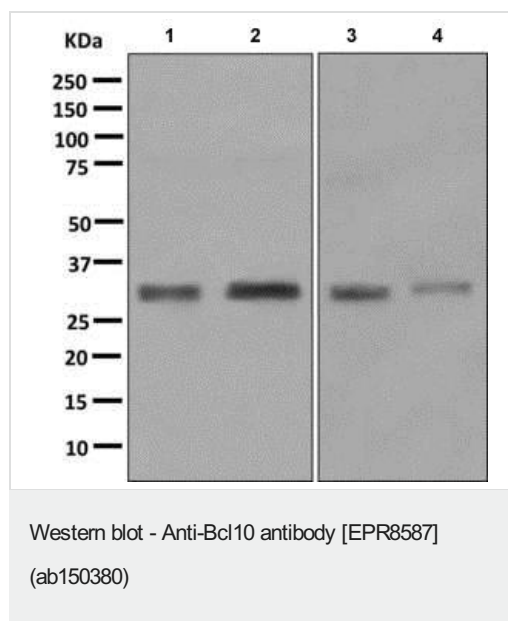
Performed under reducing conditions.

Predicted band size: 26 kDa

Observed band size: 32 kDa

Lanes 1-4: Merged signal (red and green). Green - ab150380 observed at 32 kDa. Red - loading control, [ab7291](#) observed at 52 kDa.

ab150380 Anti-Bcl10 antibody [EPR8587] was shown to specifically react with Bcl10 in wild-type HeLa cells. Loss of signal was observed when knockout cell line [ab261797](#) (knockout cell lysate [ab257144](#)) was used. Wild-type and Bcl10 knockout samples were subjected to SDS-PAGE. ab150380 and Anti-alpha Tubulin antibody [DM1A] - Loading Control ([ab7291](#)) were incubated overnight at 4°C at 1 in 1000 dilution and 1 in 20000 dilution respectively. Blots were developed with Goat anti-Rabbit IgG H&L (IRDye® 800CW) preadsorbed ([ab216773](#)) and Goat anti-Mouse IgG H&L (IRDye® 680RD) preadsorbed ([ab216776](#)) secondary antibodies at 1 in 10000 dilution for 1 hour at room temperature before imaging.



All lanes : Anti-Bcl10 antibody [EPR8587] (ab150380) at 1/1000 dilution

Lane 1 : Ramos cell lysate

Lane 2 : HeLa cell lysate

Lane 3 : HuT-78 cell lysate

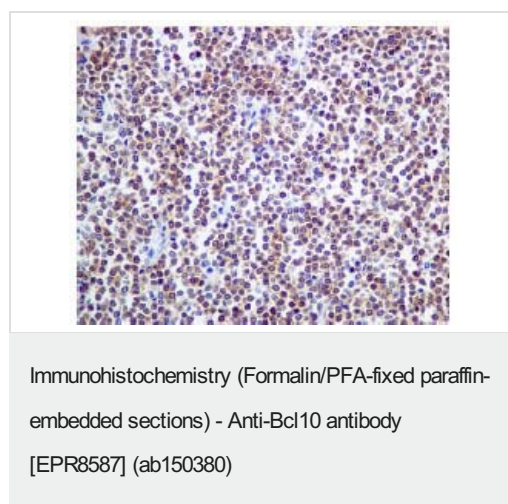
Lane 4 : Raji cell lysate

Lysates/proteins at 10 µg per lane.

Secondary

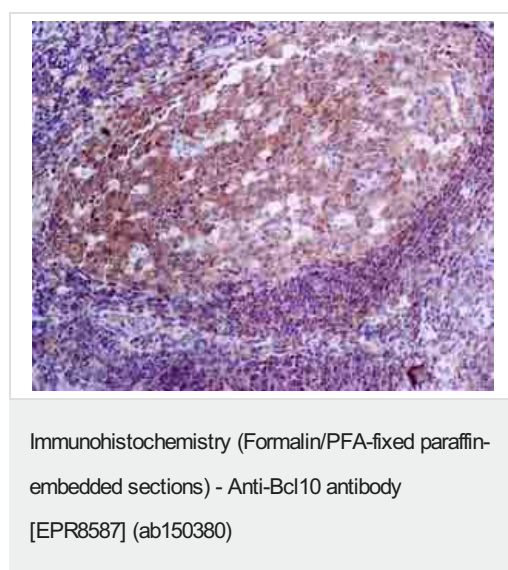
All lanes : HRP labeled goat anti-rabbit antibody at 1/2000 dilution

Predicted band size: 26 kDa



Immunohistochemical analysis of paraffin embedded Human MALT tissue labeling Bcl10 with ab150380 at a 1/250 dilution.

Perform heat mediated antigen retrieval with citrate buffer pH 6 before commencing with IHC staining protocol.



Immunohistochemical analysis of paraffin embedded Human tonsil tissue labeling Bcl10 with ab150380 at a 1/250 dilution.

Perform heat mediated antigen retrieval with citrate buffer pH 6 before commencing with IHC staining protocol.

Why choose a recombinant antibody?



Research with confidence
Consistent and reproducible results



Long-term and scalable supply
Recombinant technology



Success from the first experiment
Confirmed specificity



Ethical standards compliant
Animal-free production

Anti-Bcl10 antibody [EPR8587] (ab150380)

Please note: All products are "FOR RESEARCH USE ONLY. NOT FOR USE IN DIAGNOSTIC PROCEDURES"

Our Abpromise to you: Quality guaranteed and expert technical support

- Replacement or refund for products not performing as stated on the datasheet
- Valid for 12 months from date of delivery
- Response to your inquiry within 24 hours
- We provide support in Chinese, English, French, German, Japanese and Spanish
- Extensive multi-media technical resources to help you
- We investigate all quality concerns to ensure our products perform to the highest standards

If the product does not perform as described on this datasheet, we will offer a refund or replacement. For full details of the Abpromise, please visit <https://www.abcam.cn/abpromise> or contact our technical team.

Terms and conditions

- Guarantee only valid for products bought direct from Abcam or one of our authorized distributors