

Anti-Bcl10 antibody [4F8E8H8] ab36585

5 图像

概述

产品名称	Anti-Bcl10抗体[4F8E8H8]
描述	小鼠单克隆抗体[4F8E8H8] to Bcl10
宿主	Mouse
经测试应用	适用于: IHC-P, WB, Flow Cyt, ICC/IF
种属反应性	与反应: Mouse, Human
免疫原	Ni-NTA purified recombinant human BCL-10 expressed in E. Coli strain BL21 (DE3).
阳性对照	MCF-7 cell extract. Human breast and liver carcinoma tissue.
常规说明	<p>The Life Science industry has been in the grips of a reproducibility crisis for a number of years. Abcam is leading the way in addressing this with our range of recombinant monoclonal antibodies and knockout edited cell lines for gold-standard validation. Please check that this product meets your needs before purchasing.</p> <p>If you have any questions, special requirements or concerns, please send us an inquiry and/or contact our Support team ahead of purchase. Recommended alternatives for this product can be found below, along with publications, customer reviews and Q&As</p>

性能

形式	Liquid
存放说明	Shipped at 4°C. Upon delivery aliquot and store at -20°C or -80°C. Avoid repeated freeze / thaw cycles.
存储溶液	Preservative: 0.05% Sodium azide Constituent: PBS
纯度	Protein G purified
纯化说明	Purified from tissue culture supernatant.
克隆	单克隆
克隆编号	4F8E8H8
同种型	IgG1

应用

The Abpromise guarantee

Abpromise™承诺保证使用ab36585于以下的经测试应用

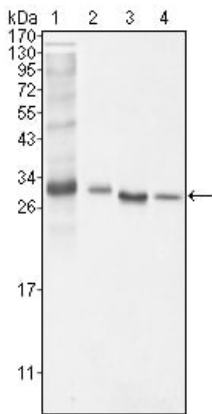
“应用说明”部分 下显示的仅为推荐的起始稀释度;实际最佳的稀释度/浓度应由使用者检定。

应用	Ab评论	说明
IHC-P		Use at an assay dependent concentration.
WB		1/500 - 1/2000. Detects a band of approximately 34 kDa (predicted molecular weight: 31 kDa).
Flow Cyt		1/200.
ICC/IF		1/200 - 1/1000.

靶标

功能	Promotes apoptosis, pro-caspase-9 maturation and activation of NF-kappa-B via NIK and IKK. May be an adapter protein between upstream TNFR1-TRADD-RIP complex and the downstream NIK-IKK-IKAP complex. Is a substrate for MALT1.
组织特异性	Ubiquitous.
疾病相关	Note=A chromosomal aberration involving BCL10 is recurrent in low-grade mucosa-associated lymphoid tissue (MALT lymphoma). Translocation t(1;14)(p22;q32). Although the BCL10/IgH translocation leaves the coding region of BCL10 intact, frequent BCL10 mutations could be attributed to the Ig somatic hypermutation mechanism resulting in nucleotide transitions. Note=Defects in BCL10 are involved in various types of cancer.
序列相似性	Contains 1 CARD domain.
翻译后修饰	Phosphorylated. Phosphorylation results in dissociation from TRAF2 and binding to BIRC2/c-IAP2.
细胞定位	Cytoplasm > perinuclear region. Membrane raft. Appears to have a perinuclear, compact and filamentous pattern of expression. Also found in the nucleus of several types of tumor cells. Colocalized with DPP4 in membrane rafts.

图片



Western blot - Anti-Bcl10 antibody [4F8E8H8] (ab36585)

All lanes : Anti-Bcl10 antibody [4F8E8H8] (ab36585) at 1/500 dilution

Lane 1 : Cell lysates prepared from NIH/3T3 cells

Lane 2 : Cell lysates prepared from Hela cells

Lane 3 : Cell lysates prepared from MCF-7 cells

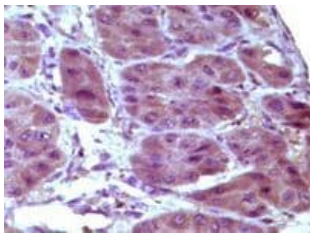
Lane 4 : Cell lysates prepared from Jurkat cells

Lysates/proteins at 100 µg per lane.

Secondary

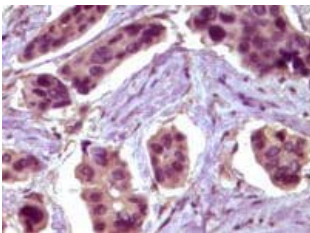
All lanes : HRP-conjugated Goat polyclonal to mouse IgG1

Predicted band size: 31 kDa



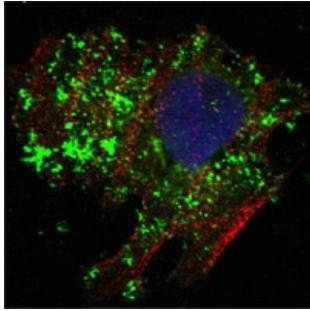
Immunohistochemistry (Formalin/PFA-fixed paraffin-embedded sections) - Anti-Bcl10 antibody [4F8E8H8] (ab36585)

Ab36585, at a 1/100 - 1/500 dilution, staining Bcl-10 in paraffin embedded human liver carcinoma tissue by immunohistochemistry with DAB staining.



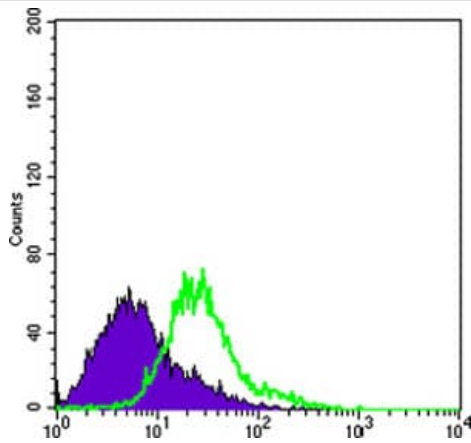
Immunohistochemistry (Formalin/PFA-fixed paraffin-embedded sections) - Anti-Bcl10 antibody [4F8E8H8] (ab36585)

Ab36585, at a 1/100 - 1/500 dilution, staining Bcl-10 in paraffin embedded human breast carcinoma tissue by immunohistochemistry with DAB staining.



Immunocytochemistry/ Immunofluorescence - Anti-Bcl10 antibody [4F8E8H8] (ab36585)

ab36585 at 1/1000 dilution staining Bcl10 in human HeLa cells by Immunocytochemistry/ Immunofluorescence. Bcl10 show green staining in image and actin filament stained red with Alexa Fluor®555 conjugated secondary. Nuclei stained blue with DRAQ5 fluorescent DNA dye.



Flow Cytometry - Anti-Bcl10 antibody [4F8E8H8] (ab36585)

Flow cytometric analysis of HeLa cells using ab36585 at a 1/200 dilution (green) and negative control (purple).

Please note: All products are "FOR RESEARCH USE ONLY. NOT FOR USE IN DIAGNOSTIC PROCEDURES"

Our Abpromise to you: Quality guaranteed and expert technical support

- Replacement or refund for products not performing as stated on the datasheet
- Valid for 12 months from date of delivery
- Response to your inquiry within 24 hours
- We provide support in Chinese, English, French, German, Japanese and Spanish
- Extensive multi-media technical resources to help you
- We investigate all quality concerns to ensure our products perform to the highest standards

If the product does not perform as described on this datasheet, we will offer a refund or replacement. For full details of the Abpromise, please visit <https://www.abcam.cn/abpromise> or contact our technical team.

Terms and conditions

- Guarantee only valid for products bought direct from Abcam or one of our authorized distributors