




Anti-Bcl-2 antibody [Bcl2/100] ab117115

敲除验证

★★★★☆ 1 Abreviews 50 References 3 图像

概述

产品名称	Anti-Bcl-2抗体[Bcl2/100]
描述	小鼠单克隆抗体[Bcl2/100] to Bcl-2
宿主	Mouse
经测试应用	适用于: WB, Flow Cyt (Intra)
种属反应性	与反应: Human 预测可用于: Cow, Cat, Pig  不与反应: Mouse
免疫原	Synthetic peptide within Human Bcl-2 aa 1-100. The exact immunogen sequence used to generate this antibody is proprietary information. If additional detail on the immunogen is needed to determine the suitability of the antibody for your needs, please contact our Scientific Support team to discuss your requirements. Database link: P10415  Run BLAST with  Run BLAST with
阳性对照	WB: Wild type HAP1 whole cell lysate, HeLa, and THP-1 whole cell lysates. Flow Cyt (Intra): Human peripheral whole blood.
常规说明	<p>The Life Science industry has been in the grips of a reproducibility crisis for a number of years. Abcam is leading the way in addressing this with our range of recombinant monoclonal antibodies and knockout edited cell lines for gold-standard validation. Please check that this product meets your needs before purchasing.</p> <p>If you have any questions, special requirements or concerns, please send us an inquiry and/or contact our Support team ahead of purchase. Recommended alternatives for this product can be found below, along with publications, customer reviews and Q&As</p>

性能

形式	Liquid
存放说明	Shipped at 4°C. Store at +4°C short term (1-2 weeks). Upon delivery aliquot. Store at -20°C. Avoid freeze / thaw cycle.
存储溶液	pH: 7.40 Preservative: 0.1% Sodium azide Constituent: PBS

纯度	Protein A purified
纯化说明	ab117115 is purified from cell culture supernatant by protein-A affinity chromatography. Purity is > 95% (by SDS-PAGE).
克隆	单克隆
克隆编号	Bcl2/100
同种型	IgG1

应用

The Abpromise guarantee

Abpromise™承诺保证使用ab117115于以下的经测试应用

“应用说明”部分 下显示的仅为推荐的起始稀释度;实际最佳的稀释度/浓度应由使用者检定。

应用	Ab评论	说明
WB		Use a concentration of 1 - 2 µg/ml. Predicted molecular weight: 26 kDa.
Flow Cyt (Intra)		Use a concentration of 1 - 5 µg/ml.

靶标

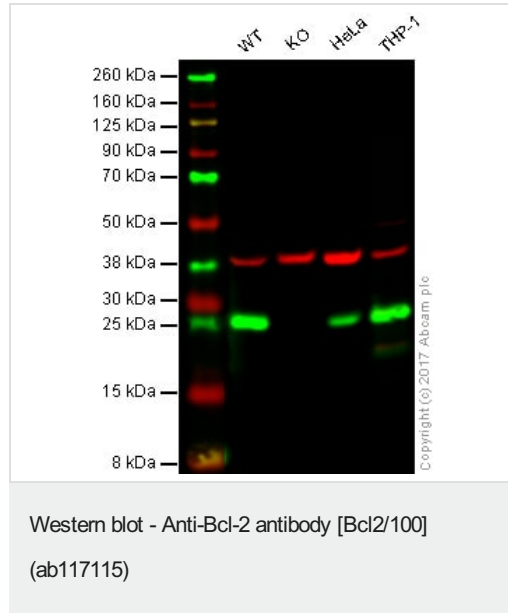
功能	Suppresses apoptosis in a variety of cell systems including factor-dependent lymphohematopoietic and neural cells. Regulates cell death by controlling the mitochondrial membrane permeability. Appears to function in a feedback loop system with caspases. Inhibits caspase activity either by preventing the release of cytochrome c from the mitochondria and/or by binding to the apoptosis-activating factor (APAF-1). May attenuate inflammation by impairing NLRP1-inflammasome activation, hence CASP1 activation and IL1B release (PubMed:17418785).
组织特异性	Expressed in a variety of tissues.
疾病相关	A chromosomal aberration involving BCL2 has been found in chronic lymphatic leukemia. Translocation t(14;18)(q32;q21) with immunoglobulin gene regions. BCL2 mutations found in non-Hodgkin lymphomas carrying the chromosomal translocation could be attributed to the Ig somatic hypermutation mechanism resulting in nucleotide transitions.
序列相似性	Belongs to the Bcl-2 family.
结构域	BH1 and BH2 domains are required for the interaction with BAX and for anti-apoptotic activity. The BH4 motif is required for anti-apoptotic activity and for interaction with RAF1 and EGLN3. The loop between motifs BH4 and BH3 is required for the interaction with NLRP1.
翻译后修饰	Phosphorylation/dephosphorylation on Ser-70 regulates anti-apoptotic activity. Growth factor-stimulated phosphorylation on Ser-70 by PKC is required for the anti-apoptosis activity and occurs during the G2/M phase of the cell cycle. In the absence of growth factors, BCL2 appears to be phosphorylated by other protein kinases such as ERKs and stress-activated kinases. Phosphorylated by MAPK8/JNK1 at Thr-69, Ser-70 and Ser-87, wich stimulates starvation-induced autophagy. Dephosphorylated by protein phosphatase 2A (PP2A). Proteolytically cleaved by caspases during apoptosis. The cleaved protein, lacking the BH4 motif, has pro-apoptotic activity, causes the release of cytochrome c into the cytosol promoting further caspase activity.

Monoubiquitinated by PARK2, leading to increase its stability. Ubiquitinated by SCF(FBXO10), leading to its degradation by the proteasome.

细胞定位

Mitochondrion outer membrane. Nucleus membrane. Endoplasmic reticulum membrane.

图片



Lane 1: Wild type HAP1 whole cell lysate (20 µg)

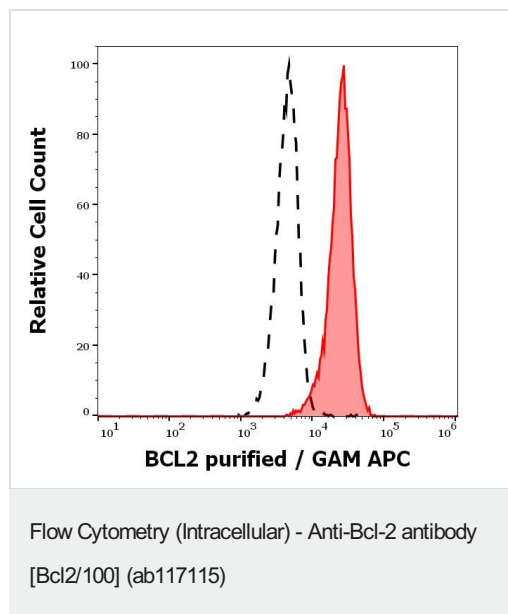
Lane 2: BCL2 knockout HAP1 whole cell lysate (20 µg)

Lane 3: HeLa whole cell lysate (20 µg)

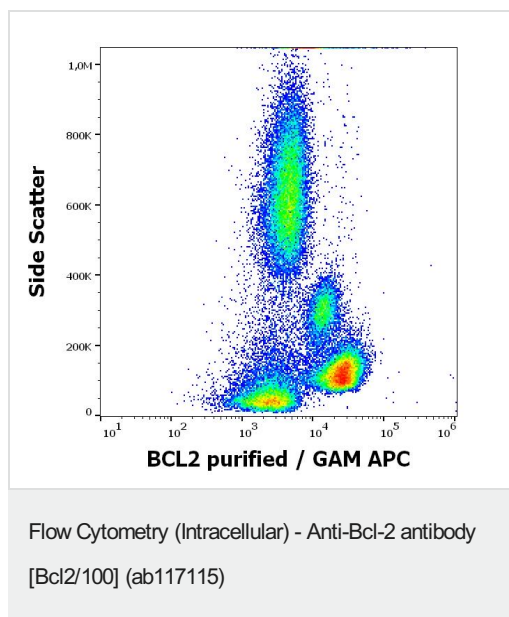
Lane 4: THP-1 whole cell lysate (20 µg)

Lanes 1 - 4: Merged signal (red and green). Green - ab117115 observed at 26 kDa. Red - loading control, **ab181602**, observed at 37 kDa.

ab117115 was shown to specifically react with BCL2 when BCL2 knockout samples were used. Wild-type and BCL2 knockout samples were subjected to SDS-PAGE. Ab117115 and **ab181602** (Rabbit anti GAPDH loading control) were incubated overnight at 4°C at 1 µg/ml and 1/10000 dilution respectively. Blots were developed with Goat anti-Mouse IgG H&L (IRDye® 800CW) preabsorbed **ab216772** and Goat anti-Rabbit IgG H&L (IRDye® 680RD) preabsorbed **ab216777** secondary antibodies at 1/10000 dilution for 1 hour at room temperature before imaging.



Flow cytometric analysis of Human peripheral whole blood labeling Bcl-2 with ab117115 at 1 µg/mL, showing the separation of human lymphocytes (red-filled) from neutrophil granulocytes (black-dashed).



Flow cytometric analysis of Human peripheral whole blood labeling Bcl-2 with ab117115 at 1 µg/mL.

Please note: All products are "FOR RESEARCH USE ONLY. NOT FOR USE IN DIAGNOSTIC PROCEDURES"

Our Abpromise to you: Quality guaranteed and expert technical support

- Replacement or refund for products not performing as stated on the datasheet
- Valid for 12 months from date of delivery
- Response to your inquiry within 24 hours
- We provide support in Chinese, English, French, German, Japanese and Spanish
- Extensive multi-media technical resources to help you
- We investigate all quality concerns to ensure our products perform to the highest standards

If the product does not perform as described on this datasheet, we will offer a refund or replacement. For full details of the Abpromise, please visit <https://www.abcam.cn/abpromise> or contact our technical team.

Terms and conditions

- Guarantee only valid for products bought direct from Abcam or one of our authorized distributors