



Anti-Bcl-2 antibody ab194583

107 References **6 图像**

概述

产品名称	Anti-Bcl-2抗体
描述	兔多克隆抗体to Bcl-2
宿主	Rabbit
经测试应用	适用于: IHC-P, WB, ICC/IF, IP
种属反应性	与反应: Mouse, Rat, Human
免疫原	Synthetic peptide corresponding to Human Bcl-2 aa 1-100. Database link: <u>P10415</u> <div>  <u>Run BLAST with</u>  <u>Run BLAST with</u> </div>
阳性对照	WB: HL-60 cell lysate, mouse testis, rat lung and rat liver tissue lysates; IHC: Human lung cancer, rat brain and mouse testis; ICC/ IF: C6, NIH-3T3 and U-2 OS cells.
常规说明	<p>The Life Science industry has been in the grips of a reproducibility crisis for a number of years. Abcam is leading the way in addressing this with our range of recombinant monoclonal antibodies and knockout edited cell lines for gold-standard validation. Please check that this product meets your needs before purchasing.</p> <p>If you have any questions, special requirements or concerns, please send us an inquiry and/or contact our Support team ahead of purchase. Recommended alternatives for this product can be found below, along with publications, customer reviews and Q&As</p>

性能

形式	Liquid
存放说明	Shipped at 4°C. Store at +4°C short term (1-2 weeks). Upon delivery aliquot. Store at -20°C long term. Avoid freeze / thaw cycle.
存储溶液	pH: 7.30 Preservative: 0.02% Sodium azide Constituents: 50% Glycerol, 49% PBS
纯度	Immunogen affinity purified
克隆	多克隆
同种型	IgG

应用

The Abpromise guarantee

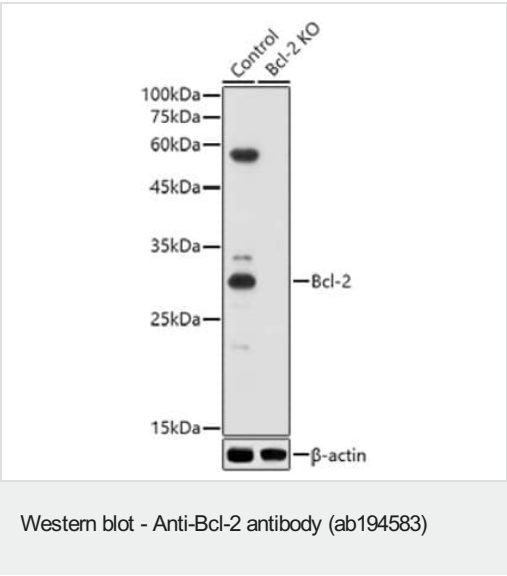
Abpromise™ 承诺保证使用 ab194583 于以下的经测试应用

“应用说明”部分 下显示的仅为推荐的起始稀释度;实际最佳的稀释度/浓度应由使用者检定。

应用	Ab 评论	说明
IHC-P		1/50 - 1/100. ab171870 - Rabbit polyclonal IgG, is suitable for use as an isotype control with this antibody.
WB		1/500 - 1/2000. Predicted molecular weight: 26 kDa.
ICC/IF		1/50 - 1/100.
IP		1/1000.

靶标

功能	Suppresses apoptosis in a variety of cell systems including factor-dependent lymphohematopoietic and neural cells. Regulates cell death by controlling the mitochondrial membrane permeability. Appears to function in a feedback loop system with caspases. Inhibits caspase activity either by preventing the release of cytochrome c from the mitochondria and/or by binding to the apoptosis-activating factor (APAF-1). May attenuate inflammation by impairing NLRP1-inflammasome activation, hence CASP1 activation and IL1B release (PubMed:17418785).
组织特异性	Expressed in a variety of tissues.
疾病相关	A chromosomal aberration involving BCL2 has been found in chronic lymphatic leukemia. Translocation t(14;18)(q32;q21) with immunoglobulin gene regions. BCL2 mutations found in non-Hodgkin lymphomas carrying the chromosomal translocation could be attributed to the Ig somatic hypermutation mechanism resulting in nucleotide transitions.
序列相似性	Belongs to the Bcl-2 family.
结构域	BH1 and BH2 domains are required for the interaction with BAX and for anti-apoptotic activity. The BH4 motif is required for anti-apoptotic activity and for interaction with RAF1 and EGLN3. The loop between motifs BH4 and BH3 is required for the interaction with NLRP1.
翻译后修饰	Phosphorylation/dephosphorylation on Ser-70 regulates anti-apoptotic activity. Growth factor-stimulated phosphorylation on Ser-70 by PKC is required for the anti-apoptosis activity and occurs during the G2/M phase of the cell cycle. In the absence of growth factors, BCL2 appears to be phosphorylated by other protein kinases such as ERKs and stress-activated kinases. Phosphorylated by MAPK8/JNK1 at Thr-69, Ser-70 and Ser-87, which stimulates starvation-induced autophagy. Dephosphorylated by protein phosphatase 2A (PP2A). Proteolytically cleaved by caspases during apoptosis. The cleaved protein, lacking the BH4 motif, has pro-apoptotic activity, causes the release of cytochrome c into the cytosol promoting further caspase activity. Monoubiquitinated by PARK2, leading to increase its stability. Ubiquitinated by SCF(FBXO10), leading to its degradation by the proteasome.
细胞定位	Mitochondrion outer membrane. Nucleus membrane. Endoplasmic reticulum membrane.



All lanes : Anti-Bcl-2 antibody (ab194583) at 1/500 dilution

Lane 1 : 239T cell lysate

Lane 2 : 239T Bcl-2 knock-out cell lysate

Lysates/proteins at 25 μ g per lane.

Secondary

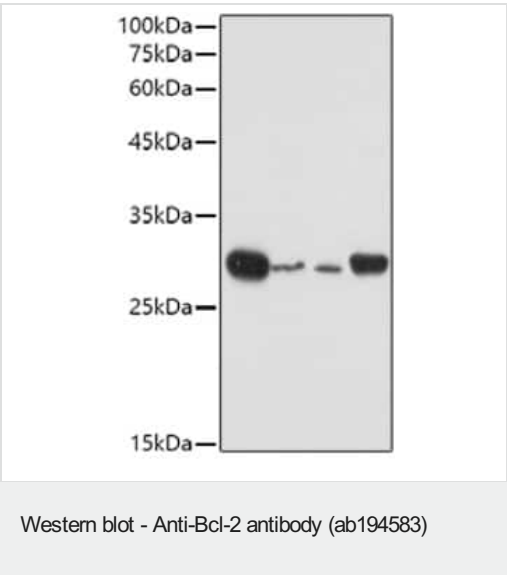
All lanes : HRP Goat Anti-Rabbit IgG (H+L) at 1/10000 dilution

Predicted band size: 26 kDa

Blocking buffer: 3% nonfat dry milk in TBST.

Detection: ECL Basic Kit (RM00020).

Exposure time: 30s.



All lanes : Anti-Bcl-2 antibody (ab194583) at 1/500 dilution

Lane 1 : Mouse lung cell extract

Lane 2 : Mouse spleen cell extract

Lane 3 : Rat spleen cell extract

Lane 4 : Rat ovary cell extract

Lysates/proteins at 25 μ g per lane.

Secondary

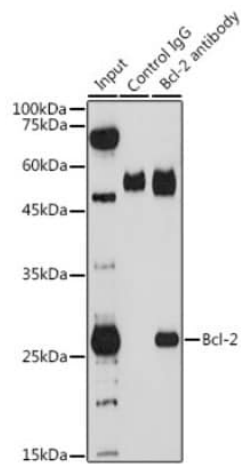
All lanes : HRP Goat Anti-Rabbit IgG (H+L) at 1/10000 dilution

Predicted band size: 26 kDa

Blocking buffer: 3% nonfat dry milk in TBST.

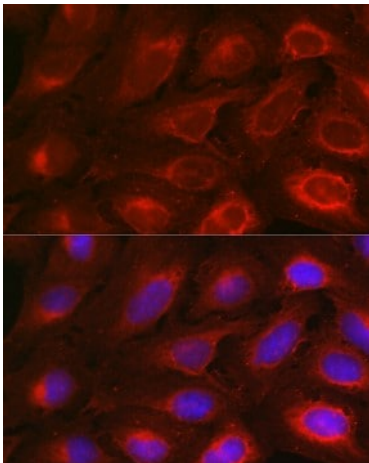
Detection: ECL Basic Kit

Exposure time: 30 seconds



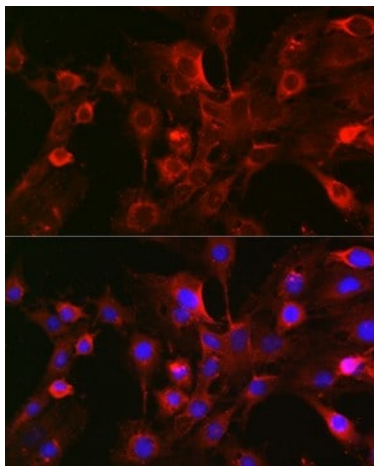
Immunoprecipitation - Anti-Bcl-2 antibody
(ab194583)

Immunoprecipitation analysis of 200ug extracts of THP-1 cells using 3ug Bcl-2 antibody (ab194583). Western blot was performed from the immunoprecipitate using Bcl-2 antibody (ab194583) at a dilution of 1:1000.



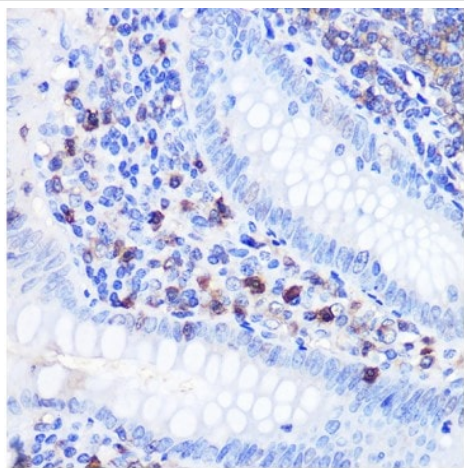
Immunocytochemistry/ Immunofluorescence - Anti-Bcl-2 antibody (ab194583)

Immunofluorescence analysis of U-2 OS cells using Bcl-2 Rabbit pAb (A0208) at dilution of 1:100 (40x lens). Blue: DAPI for nuclear staining.



Immunofluorescence analysis of C6 cells using Bcl-2 Rabbit pAb (A0208) at dilution of 1:100 (40x lens). Blue: DAPI for nuclear staining.

Immunocytochemistry/ Immunofluorescence - Anti-Bcl-2 antibody (ab194583)



Immunohistochemistry of paraffin-embedded human appendix using Bcl-2 Rabbit pAb (ab194583) at dilution of 1:100 (40x lens). Perform microwave antigen retrieval with 10 mM PBS buffer pH 7.2 before commencing with IHC staining protocol.

Immunohistochemistry (Formalin/PFA-fixed paraffin-embedded sections) - Anti-Bcl-2 antibody (ab194583)

Please note: All products are "FOR RESEARCH USE ONLY. NOT FOR USE IN DIAGNOSTIC PROCEDURES"

Our Abpromise to you: Quality guaranteed and expert technical support

- Replacement or refund for products not performing as stated on the datasheet
- Valid for 12 months from date of delivery
- Response to your inquiry within 24 hours
- We provide support in Chinese, English, French, German, Japanese and Spanish
- Extensive multi-media technical resources to help you
- We investigate all quality concerns to ensure our products perform to the highest standards

If the product does not perform as described on this datasheet, we will offer a refund or replacement. For full details of the Abpromise, please visit <https://www.abcam.cn/abpromise> or contact our technical team.

Terms and conditions

- Guarantee only valid for products bought direct from Abcam or one of our authorized distributors