

### Anti-Bax antibody [EPR18284] ab182734

敲除验证 重组 RabMAb

[51 References](#) [9 图像](#)

#### 概述

|       |  |
|-------|--|
| 产品名称  | Anti-Bax抗体[EPR18284]   |
| 描述    | 兔单克隆抗体[EPR18284] to Bax  |
| 宿主    | Rabbit   |
| 特异性   | Expression levels of BAX protein vary with sample type. Induction may be required if endogenous expression is low.   |
| 经测试应用 | <b>适用于:</b> WB, IP   |
| 种属反应性 | <b>与反应:</b> Mouse, Rat, Human  |
| 免疫原   | Synthetic peptide. This information is proprietary to Abcam and/or its suppliers.  |
| 阳性对照  | WB: HeLa, MCF7, HuT-78, Ramos, HEK-293, Raji, L-929, C2C12, C6, PC-12 and NIH/3T3 whole cell lysates; Human kidney and spleen lysates; Mouse brain, heart, kidney and spleen lysates; Rat brain, kidney and spleen lysates; IP: HeLa whole cell lysate.  |
| 常规说明  | <p>This product is a recombinant monoclonal antibody, which offers several advantages including:</p> <ul style="list-style-type: none"><li>- High batch-to-batch consistency and reproducibility</li><li>- Improved sensitivity and specificity</li><li>- Long-term security of supply</li><li>- Animal-free production</li></ul> <p>For more information <a href="#">see here</a>.</p> <p>Our RabMAb<sup>®</sup> technology is a patented hybridoma-based technology for making rabbit monoclonal antibodies. For details on our patents, please refer to <a href="#">RabMAb<sup>®</sup> patents</a>.</p> |

#### 性能

|      |   |
|------|---|
| 形式   | Liquid  |
| 存放说明 | Shipped at 4°C. Store at +4°C short term (1-2 weeks). Upon delivery aliquot. Store at -20°C long term. Avoid freeze / thaw cycle. |
| 存储溶液 | pH: 7.2<br>Preservative: 0.01% Sodium azide<br>Constituents: 59% PBS, 40% Glycerol (glycerin, glycerine), 0.05% BSA               |
| 纯度   | Protein A purified  |
| 克隆   | 单克隆   |

克隆编号    EPR18284  
同种型    IgG

## 应用

---

**The Abpromise guarantee**                      **Abpromise™**承诺保证使用ab182734于以下的经测试应用

“应用说明”部分 下显示的仅为推荐的起始稀释度;实际最佳的稀释度/浓度应由使用者检定。

| 应用 | Ab评论 | 说明   |
|----|------|--|
| WB |      | 1/1000. Detects a band of approximately 19 kDa (predicted molecular weight: 21 kDa). |
| IP |      | 1/40.  |

## 靶标

---

**功能**    Accelerates programmed cell death by binding to, and antagonizing the apoptosis repressor BCL2 or its adenovirus homolog E1B 19k protein. Under stress conditions, undergoes a conformation change that causes translocation to the mitochondrion membrane, leading to the release of cytochrome c that then triggers apoptosis. Promotes activation of CASP3, and thereby apoptosis.

**组织特异性**    Expressed in a wide variety of tissues. Isoform Psi is found in glial tumors. Isoform Alpha is expressed in spleen, breast, ovary, testis, colon and brain, and at low levels in skin and lung. Isoform Sigma is expressed in spleen, breast, ovary, testis, lung, colon, brain and at low levels in skin. Isoform Alpha and isoform Sigma are expressed in pro-myelocytic leukemia, histiocytic lymphoma, Burkitt's lymphoma, T-cell lymphoma, lymphoblastic leukemia, breast adenocarcinoma, ovary adenocarcinoma, prostate carcinoma, prostate adenocarcinoma, lung carcinoma, epidermoid carcinoma, small cell lung carcinoma and colon adenocarcinoma cell lines.

**序列相似性**    Belongs to the Bcl-2 family.

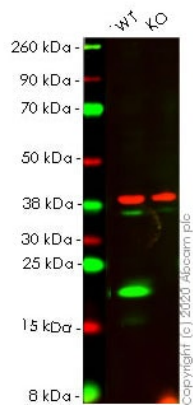
**结构域**    Intact BH3 motif is required by BIK, BID, BAK, BAD and BAX for their pro-apoptotic activity and for their interaction with anti-apoptotic members of the Bcl-2 family.

**细胞定位**    Cytoplasm and Mitochondrion membrane. Cytoplasm. Colocalizes with 14-3-3 proteins in the cytoplasm. Under stress conditions, undergoes a conformation change that causes release from JNK-phosphorylated 14-3-3 proteins and translocation to the mitochondrion membrane.

---

## 图片

---



Western blot - Anti-Bax antibody [EPR18284] (ab182734)

**All lanes** : Anti-Bax antibody [EPR18284] (ab182734) at 1/1000 dilution

**Lane 1** : Wild-type HeLa cell lysate

**Lane 2** : BAX knockout HeLa cell lysate

Lysates/proteins at 20 µg per lane.

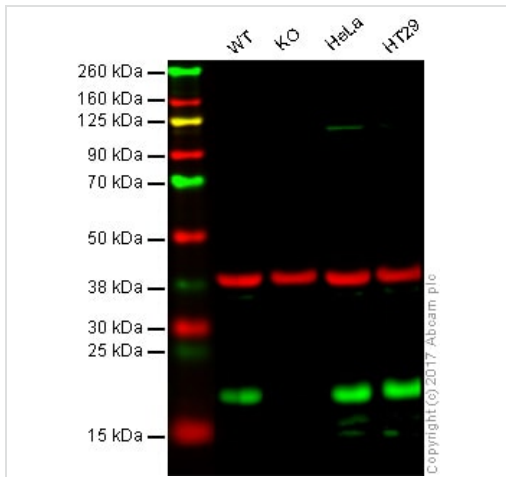
Performed under reducing conditions.

**Predicted band size:** 21 kDa

**Observed band size:** 21 kDa

**Lanes 1- 2:** Merged signal (red and green). Green - ab182734 observed at 21 kDa. Red - Anti-GAPDH antibody [6C5] - Loading Control (**ab8245**) observed at 37 kDa.

ab182734 was shown to react with Bax in wild-type HeLa cells in western blot. Loss of signal was observed when knockout cell line **ab255363** (knockout cell lysate **ab263841**) was used. Wild-type HeLa and BAX knockout HeLa cell lysates were subjected to SDS-PAGE. Membrane was blocked for 1 hour at room temperature in 0.1% TBST with 3% non-fat dried milk. ab182734 and Anti-GAPDH antibody [6C5] - Loading Control (**ab8245**) overnight at 4°C at a 1 in 1000 dilution and a 1 in 20000 dilution respectively. Blots were developed with Goat anti-Rabbit IgG H&L (IRDye®800CW) preadsorbed (**ab216773**) and Goat anti-Mouse IgG H&L (IRDye®680RD) preadsorbed (**ab216776**) secondary antibodies at 1 in 20000 dilution for 1 hour at room temperature before imaging.



Western blot - Anti-Bax antibody [EPR18284] (ab182734)

**All lanes** : Anti-Bax antibody [EPR18284] (ab182734) at 1/1000 dilution

**Lane 1** : Wild-type HAP1 whole cell lysate

**Lane 2** : BAX knockout HAP1 whole cell lysate

**Lane 3** : HeLa whole cell lysate

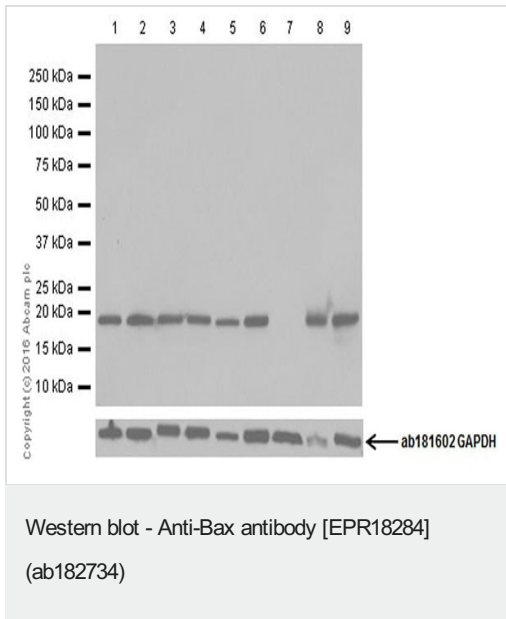
**Lane 4** : HT29 whole cell lysate

Lysates/proteins at 20 µg per lane.

**Predicted band size:** 21 kDa

**Lanes 1 - 4:** Merged signal (red and green). Green - ab182734 observed at 20 kDa. Red - loading control, **ab8245**, observed at 37 kDa.

ab182734 was shown to specifically react with BAX when BAX knockout samples were used. Wild-type and BAX knockout samples were subjected to SDS-PAGE. Ab182734 and **ab8245** (Mouse anti GAPDH loading control) were incubated overnight at 4°C at 1/1000 dilution and 1/10000 dilution respectively. Blots were developed with Goat anti-Rabbit IgG H&L (IRDye® 800CW) preabsorbed **ab216773** and Goat anti-Mouse IgG H&L (IRDye® 680RD) preabsorbed **ab216776** secondary antibodies at 1/10000 dilution for 1 hour at room temperature before imaging.



**All lanes** : Anti-Bax antibody [EPR18284] (ab182734) at 1/1000 dilution

**Lane 1** : HeLa (Human epithelial cell line from cervix adenocarcinoma) whole cell lysate

**Lane 2** : MCF7 (Human breast adenocarcinoma cell line) whole cell lysate

**Lane 3** : HuT-78 (Human Sezary syndrome cell line) whole cell lysate

**Lane 4** : Ramos (Human Burkitt's lymphoma cell line) whole cell lysate

**Lane 5** : HEK-293 (Human epithelial cell line from embryonic kidney) whole cell lysate

**Lane 6** : Raji (Human Burkitt's lymphoma cell line) whole cell lysate

**Lane 7** : Jurkat (Human T cell leukemia cell line from peripheral blood) whole cell lysate

**Lane 8** : L-929 (Mouse connective tissue fibroblast cell line) whole cell lysate

**Lane 9** : C2C12 (Mouse myoblast cell line) whole cell lysate

Lysates/proteins at 20 µg per lane.

### Secondary

**All lanes** : Goat Anti-Rabbit IgG H&L (HRP) ([ab97051](#)) at 1/100000 dilution

**Predicted band size:** 21 kDa

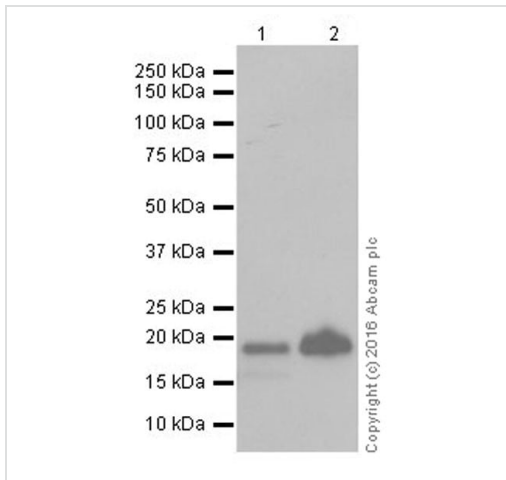
**Observed band size:** 19 kDa

**Exposure time:** 2 seconds

Blocking/Dilution buffer: 5% NFDm/TBST.

### Negative control:

Jurkat doesn't express Bax. (PMID: 9583678).



Western blot - Anti-Bax antibody [EPR18284]  
(ab182734)

**All lanes** : Anti-Bax antibody [EPR18284] (ab182734) at 1/1000 dilution

**Lane 1** : Human kidney lysate

**Lane 2** : Human spleen lysate

Lysates/proteins at 10 µg per lane.

### Secondary

**All lanes** : Goat Anti-Rabbit IgG Peroxidase Conjugate, specific to the non-reduced form of IgG at 1/10000 dilution

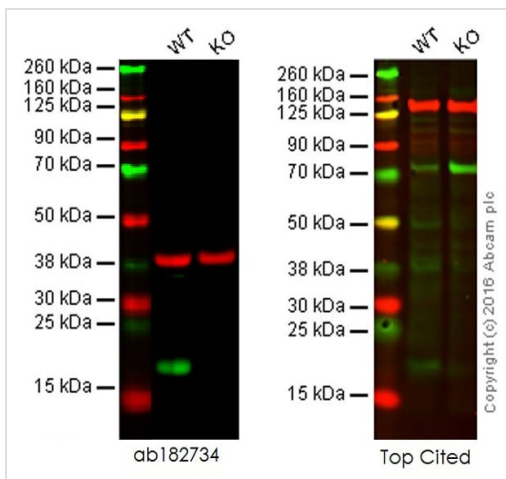
**Predicted band size:** 21 kDa

**Observed band size:** 19 kDa

**Exposure time:** 3 seconds

Blocking/Dilution buffer: 5% NFDm/TBST.

This product reacts with a 15 kD isoform (PMID: 7607685).



Western blot - Anti-Bax antibody [EPR18284]  
(ab182734)

**All lanes** : Anti-Bax antibody [EPR18284] (ab182734)

**Lane 1** : Wild-type HAP1 cell lysate

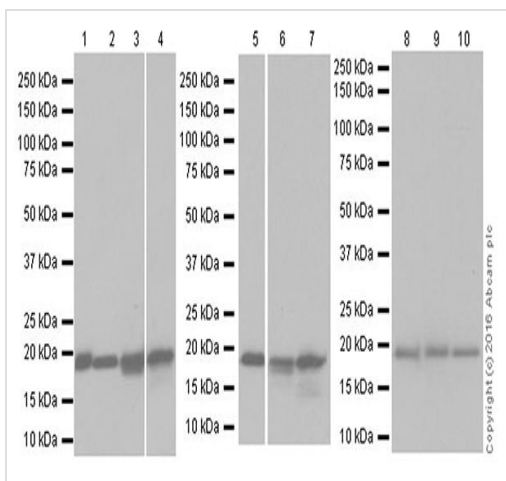
**Lane 2** : Bax knockout HAP1 cell lysate

Lysates/proteins at 20 µg per lane.

**Predicted band size:** 21 kDa

**Lanes 1 - 2:** Merged signal (red and green). Green - ab182734 observed at 20 kDa. Red - loading control, **ab8245**, observed at 37 kDa or **ab18058**, observed at 130 kDa.

This western blot image is a comparison between ab182734 and a competitor's top cited rabbit polyclonal antibody.



Western blot - Anti-Bax antibody [EPR18284]  
(ab182734)

**All lanes** : Anti-Bax antibody [EPR18284] (ab182734) at 1/1000 dilution

**Lane 1** : Mouse brain lysate

**Lane 2** : Mouse heart lysate

**Lane 3** : Mouse kidney lysate

**Lane 4** : Mouse spleen lysate

**Lane 5** : Rat brain lysate

**Lane 6** : Rat kidney lysate

**Lane 7** : Rat spleen lysate

**Lane 8** : C6 (Rat glial tumor cell line) whole cell lysate

**Lane 9** : PC-12 (Rat adrenal gland pheochromocytoma cell line) whole cell lysate

**Lane 10** : NIH/3T3 (Mouse embryonic fibroblast cell line) whole cell lysate

Lysates/proteins at 10 µg per lane.

### Secondary

**All lanes** : Goat Anti-Rabbit IgG H&L (HRP) ([ab97051](#)) at 1/100000 dilution

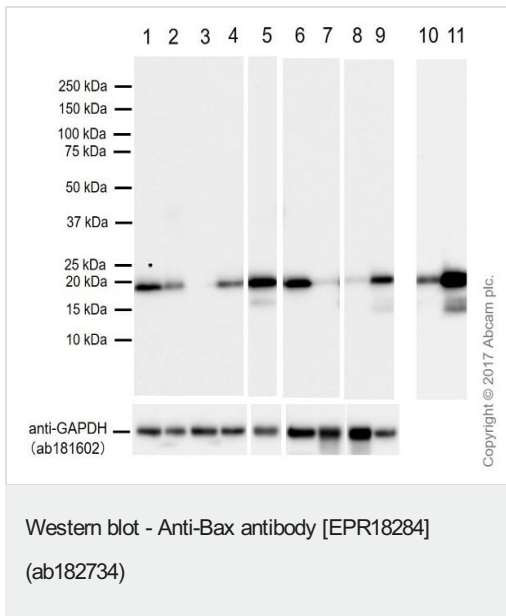
**Predicted band size:** 21 kDa

**Observed band size:** 19 kDa

Blocking/Dilution buffer: 5% NFDm/TBST.

Exposure times: Lane 1, 2 and 3: 3 seconds; Lane 4: 2 seconds; Lane 5: 3 seconds; Lane 6 and 7: 2 seconds; Lane 8, 9 and 10: 1 second.

This product reacts with a 15 kD isoform (PMID: 7607685).



**All lanes** : Anti-Bax antibody [EPR18284] (ab182734) at 1/2000 dilution

**Lane 1** : HeLa (Human cervix adenocarcinoma epithelial cell).

Whole cell lysates

**Lane 2** : Hep G2 (Human hepatocellular carcinoma epithelial cell).

Whole cell lysates

**Lane 3** : Jurkat (Human T cell leukemia T lymphocyte) Whole cell lysates

**Lane 4** : A549 (Human lung carcinoma epithelial cell) Whole cell lysates

**Lane 5** : C2C12 (Mouse myoblasts myoblast) Whole cell lysates

**Lane 6** : C6 (Rat glial tumor glial cell) Whole cell lysates

**Lane 7** : Mouse brain. Whole tissue lysate

**Lanes 8 & 10** : Rat brain. Whole tissue lysate

**Lanes 9 & 11** : Rat Spleen. Whole tissue lysate

Lysates/proteins at 20 µg per lane.

### Secondary

**All lanes** : Goat Anti-Rabbit IgG H&L (HRP) (**ab97051**) at 1/100000 dilution (Goat Anti-Rabbit IgG, (H+L), Peroxidase conjugated)

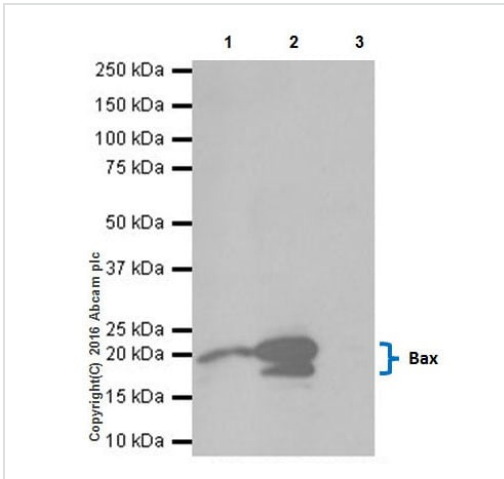
**Predicted band size:** 21 kDa

**Observed band size:** 18 kDa

Blocking and diluting 5% NFDm/TBST

Exposure time 1~9 lanes 24 s; 10~11 lanes 3 min





Immunoprecipitation - Anti-Bax antibody  
[EPR18284] (ab182734)

Bax was immunoprecipitated from 0.35 mg of HeLa (Human epithelial cell line from cervix adenocarcinoma) whole cell lysate with ab182734 at 1/40 dilution. Western blot was performed from the immunoprecipitate using ab182734 at 1/1000 dilution. VeriBlot for IP Detection Reagent (HRP) (**ab131366**), was used for detection at 1/10000 dilution.

Lane 1: HeLa whole cell lysate, 10µg (Input).

Lane 2: ab182734 IP in HeLa whole cell lysate.

Lane 3: Rabbit IgG, monoclonal [EPR25A] - Isotype

Control (**ab172730**) instead of ab182734 in HeLa whole cell lysate.

Blocking and dilution buffer and concentration: 5% NFDm/TBST.

Exposure time: 10 seconds.

Why choose a recombinant antibody?

|  |  |
|--|--|
|  <p><b>Research with confidence</b><br/>Consistent and reproducible results</p> |  <p><b>Long-term and scalable supply</b><br/>Recombinant technology</p> |
|  <p><b>Success from the first experiment</b><br/>Confirmed specificity</p>    |  <p><b>Ethical standards compliant</b><br/>Animal-free production</p> |

Anti-Bax antibody [EPR18284] (ab182734)

**Please note:** All products are "FOR RESEARCH USE ONLY. NOT FOR USE IN DIAGNOSTIC PROCEDURES"

### Our Abpromise to you: Quality guaranteed and expert technical support

- Replacement or refund for products not performing as stated on the datasheet
- Valid for 12 months from date of delivery
- Response to your inquiry within 24 hours
- We provide support in Chinese, English, French, German, Japanese and Spanish
- Extensive multi-media technical resources to help you
- We investigate all quality concerns to ensure our products perform to the highest standards

If the product does not perform as described on this datasheet, we will offer a refund or replacement. For full details of the Abpromise, please visit <https://www.abcam.cn/abpromise> or contact our technical team.

## Terms and conditions

---

- Guarantee only valid for products bought direct from Abcam or one of our authorized distributors