

# Anti-BAP29 antibody ab62571

### 3 图像

#### 概述

---

产品名称	Anti-BAP29抗体
描述	兔多克隆抗体to BAP29
宿主	Rabbit
经测试应用	适用于: IHC-P, WB, ICC/IF
种属反应性	与反应: Human
免疫原	A 17 amino acid peptide from near the center of human BAP29
阳性对照	Human heart tissue lysate and human heart tissue.
常规说明	<p>The Life Science industry has been in the grips of a reproducibility crisis for a number of years. Abcam is leading the way in addressing this with our range of recombinant monoclonal antibodies and knockout edited cell lines for gold-standard validation. Please check that this product meets your needs before purchasing.</p> <p>If you have any questions, special requirements or concerns, please send us an inquiry and/or contact our Support team ahead of purchase. Recommended alternatives for this product can be found below, along with publications, customer reviews and Q&amp;As</p>

#### 性能

---

形式	Liquid
存放说明	Shipped at 4°C. Store at +4°C.
存储溶液	pH: 7.2 Preservative: 0.02% Sodium azide Constituent: PBS
纯度	Immunogen affinity purified
克隆	多克隆
同种型	IgG

#### 应用

---

**The Abpromise guarantee**      **Abpromise™**承诺保证使用ab62571于以下的经测试应用

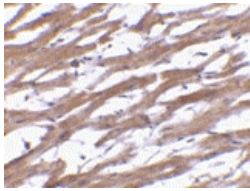
“应用说明”部分下显示的仅为推荐的起始稀释度;实际最佳的稀释度/浓度应由使用者检定。

应用	Ab评论	说明
IHC-P		Use a concentration of 10 µg/ml.
WB		Use a concentration of 0.5 - 1 µg/ml. Detects a band of approximately 27 kDa (predicted molecular weight: 27 kDa).
ICC/IF		Use a concentration of 20 µg/ml.

## 靶标

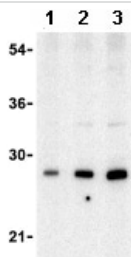
<b>功能</b>	May play a role in anterograde transport of membrane proteins from the endoplasmic reticulum to the Golgi. May be involved in CASP8-mediated apoptosis.
<b>序列相似性</b>	Belongs to the BCAP29/BCAP31 family.
<b>细胞定位</b>	Endoplasmic reticulum membrane.

## 图片



Immunohistochemistry (Formalin/PFA-fixed paraffin-embedded sections) - Anti-BAP29 antibody (ab62571)

ab62571 at 10µg/ml staining BAP29 in paraffin embedded human heart tissue section by Immunohistochemistry.



Western blot - Anti-BAP29 antibody (ab62571)

**Lane 1 :** Anti-BAP29 antibody (ab62571) at 0.5 µg/ml

**Lane 2 :** Anti-BAP29 antibody (ab62571) at 1 µg/ml

**Lane 3 :** Anti-BAP29 antibody (ab62571) at 2 µg/ml

**All lanes :** human heart tissue lysate

Lysates/proteins at 15 µg per lane.

**Predicted band size:** 27 kDa

**Observed band size:** 27 kDa

Immunocytochemistry/ Immunofluorescence - Anti-BAP29 antibody (ab62571)

Immunofluorescence of BAP29 in Human Heart cells using ab62571 at 20 ug/ml.

**Please note:** All products are "FOR RESEARCH USE ONLY. NOT FOR USE IN DIAGNOSTIC PROCEDURES"

### **Our Abpromise to you: Quality guaranteed and expert technical support**

---

- Replacement or refund for products not performing as stated on the datasheet
- Valid for 12 months from date of delivery
- Response to your inquiry within 24 hours
- We provide support in Chinese, English, French, German, Japanese and Spanish
- Extensive multi-media technical resources to help you
- We investigate all quality concerns to ensure our products perform to the highest standards

If the product does not perform as described on this datasheet, we will offer a refund or replacement. For full details of the Abpromise, please visit <https://www.abcam.cn/abpromise> or contact our technical team.

### **Terms and conditions**

---

- Guarantee only valid for products bought direct from Abcam or one of our authorized distributors