

Anti-Bak antibody ab92999

敲除 验证

4 图像

概述

产品名称	Anti-Bak抗体
描述	兔多克隆抗体to Bak
宿主	Rabbit
经测试应用	适用于: ICC/IF, WB
种属反应性	与反应: Human
免疫原	Synthetic peptide corresponding to Human Bak aa 1-100 conjugated to keyhole limpet haemocyanin. (Peptide available as ab106421)
阳性对照	WB: HeLa, HAP1 and A431 cell lysates. ICC/IF: HepG2 cells.
常规说明	<p>The Life Science industry has been in the grips of a reproducibility crisis for a number of years. Abcam is leading the way in addressing this with our range of recombinant monoclonal antibodies and knockout edited cell lines for gold-standard validation. Please check that this product meets your needs before purchasing.</p> <p>If you have any questions, special requirements or concerns, please send us an inquiry and/or contact our Support team ahead of purchase. Recommended alternatives for this product can be found below, along with publications, customer reviews and Q&As</p>

性能

形式	Liquid
存放说明	Shipped at 4°C. Store at +4°C short term (1-2 weeks). Upon delivery aliquot. Store at -20°C or -80°C. Avoid freeze / thaw cycle.
存储溶液	<p>pH: 7.40</p> <p>Preservative: 0.02% Sodium azide</p> <p>Constituent: PBS</p> <p>Batches of this product that have a concentration < 1mg/ml may have BSA added as a stabilising agent. If you would like information about the formulation of a specific lot, please contact our scientific support team who will be happy to help.</p>
纯度	Immunogen affinity purified

克隆 多克隆
同种型 IgG

应用

The Abpromise guarantee **Abpromise™**承诺保证使用ab92999于以下的经测试应用

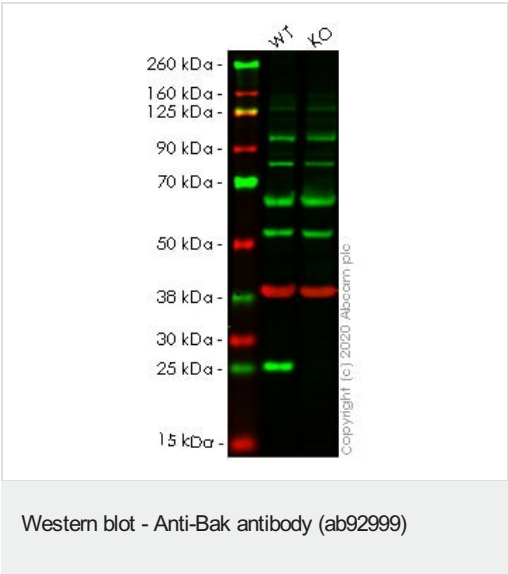
“应用说明”部分 下显示的仅为推荐的起始稀释度;实际最佳的稀释度/浓度应由使用者检定。

应用	Ab评论	说明
ICC/IF		Use a concentration of 5 µg/ml.
WB		Use at an assay dependent concentration. Detects a band of approximately 25 kDa (predicted molecular weight: 23 kDa).

靶标

功能	In the presence of an appropriate stimulus, accelerates programmed cell death by binding to, and antagonizing the anti-apoptotic action of BCL2 or its adenovirus homolog E1B 19k protein. Low micromolar levels of zinc ions inhibit the promotion of apoptosis.
组织特异性	Expressed in a wide variety of tissues, with highest levels in the heart and skeletal muscle.
序列相似性	Belongs to the Bcl-2 family.
结构域	Intact BH3 motif is required by BIK, BID, BAK, BAD and BAX for their pro-apoptotic activity and for their interaction with anti-apoptotic members of the Bcl-2 family.
细胞定位	Mitochondrion membrane.

图片



All lanes : Anti-Bak antibody (ab92999) at 1 µg/ml

Lane 1 : Wild-type HeLa cell lysate

Lane 2 : BAK1 knockout HeLa cell lysate

Lysates/proteins at 20 µg per lane.

Performed under reducing conditions.

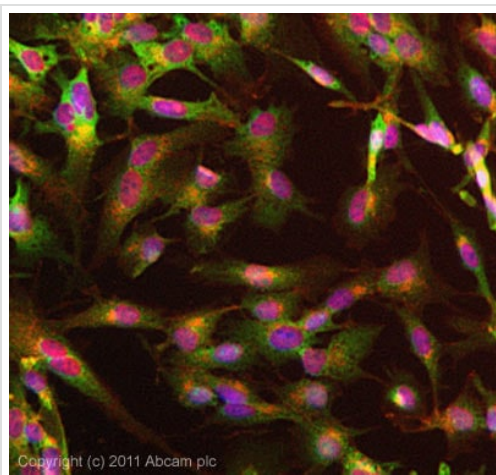
Predicted band size: 23 kDa

Observed band size: 23 kDa

Lanes 1-2: Merged signal (red and green). Green - ab92999 observed at 23 kDa. Red - Anti-GAPDH antibody [6C5] - Loading

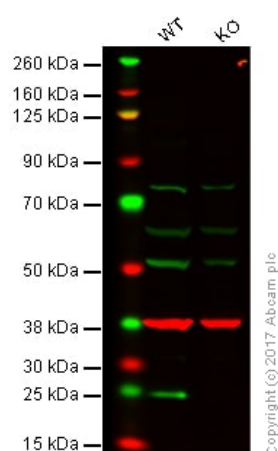
Control ([ab8245](#)) observed at 37 kDa.

ab92999 was shown to react with Bak in wild-type HeLa cells in western blot. Loss of signal was observed when knockout cell line [ab265277](#) (knockout cell lysate [ab257077](#)) was used. Wild-type HeLa and BAK1 knockout HeLa cell lysates were subjected to SDS-PAGE. Membrane was blocked for 1 hour at room temperature in 0.1% TBST with 3% non-fat dried milk. ab92999 and Anti-GAPDH antibody [6C5] - Loading Control ([ab8245](#)) overnight at 4°C at a 1 µg/ml and a 1 in 20000 dilution respectively. Blots were developed with Goat anti-Rabbit IgG H&L (IRDye®800CW) preadsorbed ([ab216773](#)) and Goat anti-Mouse IgG H&L (IRDye®680RD) preadsorbed ([ab216776](#)) secondary antibodies at 1 in 20000 dilution for 1 hour at room temperature before imaging.



Immunocytochemistry/ Immunofluorescence - Anti-Bak antibody (ab92999)

ICC/IF image of ab92999 stained HepG2 cells. The cells were 4% formaldehyde fixed (5 min) and then incubated in 1%BSA / 10% normal goat serum / 0.3M glycine in 0.1% PBS-Tween for 1h to permeabilise the cells and block non-specific protein-protein interactions. The cells were then incubated with the antibody ab92999 at 5µg/ml overnight at +4°C. The secondary antibody (green) was DyLight® 488 goat anti- rabbit IgG (H+L)([ab96899](#)) used at a 1/1000 dilution for 1h. Alexa Fluor® 594 WGA was used to label plasma membranes (red) at a 1/200 dilution for 1h. DAPI was used to stain the cell nuclei (blue) at a concentration of 1.43µM.



Western blot - Anti-Bak antibody (ab92999)

All lanes : Anti-Bak antibody (ab92999) at 1 µg/ml

Lane 1 : Wild-type HAP1 whole cell lysate

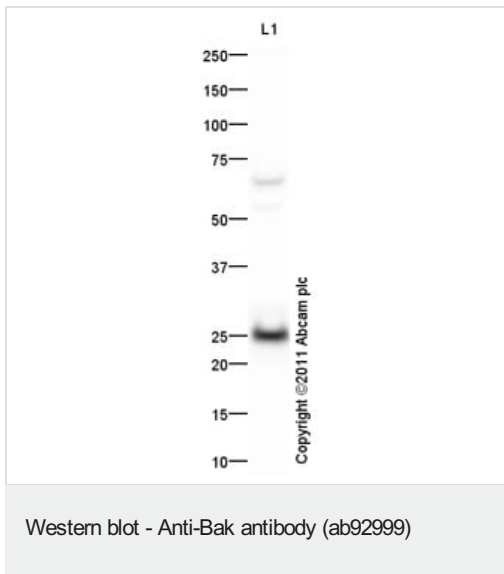
Lane 2 : Bak knockout HAP1 whole cell lysate

Lysates/proteins at 20 µg per lane.

Predicted band size: 23 kDa

Lanes 1 - 2: Merged signal (red and green). Green - ab92999 observed at 23 kDa. Red - loading control, [ab9484](#), observed at 37 kDa.

ab92999 was shown to recognize Bak in wild-type HAP1 cells as signal was lost at the expected MW in Bak knockout cells. Additional cross-reactive bands were observed in the wild-type and knockout cells. Wild-type and Bak knockout samples were subjected to SDS-PAGE. ab92999 and **ab9484** (Mouse anti-GAPDH loading control) were incubated overnight at 4°C at 1 µg/ml and 1/20000 dilution respectively. Blots were developed with Goat anti-Mouse IgG H&L (IRDye® 800CW) preabsorbed **ab216772** and Goat anti-Rabbit IgG H&L (IRDye® 680RD) preabsorbed **ab216777** secondary antibodies at 1/20000 dilution for 1 hour at room temperature before imaging.



Anti-Bak antibody (ab92999) at 1 µg/ml + A431 (Human epithelial carcinoma cell line) Whole Cell Lysate at 10 µg

Secondary

Goat Anti-Rabbit IgG H&L (HRP) preadsorbed (**ab97080**) at 1/5000 dilution

Developed using the ECL technique.

Performed under reducing conditions.

Predicted band size: 23 kDa

Observed band size: 25 kDa

Additional bands at: 70 kDa. We are unsure as to the identity of these extra bands.

Exposure time: 12 minutes

Please note: All products are "FOR RESEARCH USE ONLY. NOT FOR USE IN DIAGNOSTIC PROCEDURES"

Our Abpromise to you: Quality guaranteed and expert technical support

- Replacement or refund for products not performing as stated on the datasheet
- Valid for 12 months from date of delivery
- Response to your inquiry within 24 hours
- We provide support in Chinese, English, French, German, Japanese and Spanish
- Extensive multi-media technical resources to help you
- We investigate all quality concerns to ensure our products perform to the highest standards

If the product does not perform as described on this datasheet, we will offer a refund or replacement. For full details of the Abpromise, please visit <https://www.abcam.cn/abpromise> or contact our technical team.

Terms and conditions

- Guarantee only valid for products bought direct from Abcam or one of our authorized distributors