

# Anti-BAFF antibody ab8396

[3 References](#) [2 图像](#)

### 概述

---

产品名称	Anti-BAFF抗体
描述	兔多克隆抗体to BAFF
宿主	Rabbit
经测试应用	适用于: ICC/IF, WB
种属反应性	与反应: Mouse, Rat, Human
免疫原	Synthetic peptide, corresponding to amino acids 254-269 of Human BAFF.
阳性对照	HL60 cell lysate
常规说明	<p>The Life Science industry has been in the grips of a reproducibility crisis for a number of years. Abcam is leading the way in addressing this with our range of recombinant monoclonal antibodies and knockout edited cell lines for gold-standard validation. Please check that this product meets your needs before purchasing.</p> <p>If you have any questions, special requirements or concerns, please send us an inquiry and/or contact our Support team ahead of purchase. Recommended alternatives for this product can be found below, along with publications, customer reviews and Q&amp;As</p>

### 性能

---

形式	Liquid
存放说明	Shipped at 4°C. Store at +4°C.
存储溶液	pH: 7.2 Preservative: 0.02% Sodium azide
纯度	Ion Exchange Chromatography
克隆	多克隆
同种型	IgG
轻链类型	unknown

### 应用

---

The Abpromise guarantee

**Abpromise™** 承诺保证使用ab8396于以下的经测试应用

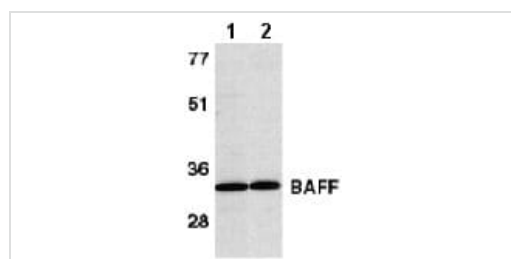
“应用说明”部分 下显示的仅为推荐的起始稀释度;实际最佳的稀释度/浓度应由使用者检定。

应用	Ab评论	说明
ICC/IF		Use a concentration of 1 µg/ml.
WB		Use a concentration of 0.25 - 1 µg/ml. Detects a band of approximately 34 kDa.

## 靶标

<b>功能</b>	Cytokine that binds to TNFRSF13B/TACI and TNFRSF17/BCMA. TNFSF13/APRIL binds to the same 2 receptors. Together, they form a 2 ligands -2 receptors pathway involved in the stimulation of B-and T-cell function and the regulation of humoral immunity. A third B-cell specific BAFF-receptor (BAFFR/BR3) promotes the survival of mature B-cells and the B-cell response.
<b>组织特异性</b>	Abundantly expressed in peripheral blood Leukocytes and is specifically expressed in monocytes and macrophages. Also found in the spleen, lymph node, bone marrow, T-cells and dendritic cells. A lower expression seen in placenta, heart, lung, fetal liver, thymus, and pancreas.
<b>序列相似性</b>	Belongs to the tumor necrosis factor family.
<b>翻译后修饰</b>	The soluble form derives from the membrane form by proteolytic processing. N-glycosylated.
<b>细胞定位</b>	Secreted and Cell membrane.

## 图片



Western blot - Anti-BAFF antibody (ab8396)

**All lanes :** Anti-BAFF antibody (ab8396) at 1 µg/ml

**Lane 1 :** Human HL60 cell lysate

**Lane 2 :** Murine spleen tissue lysate

**Observed band size:** 34 kDa



Immunocytochemistry/ Immunofluorescence - Anti-BAFF antibody (ab8396)

ab8396 at 1µg/ml staining BAFF in HL60 cells by ICC/IF

## **Our Abpromise to you: Quality guaranteed and expert technical support**

---

- Replacement or refund for products not performing as stated on the datasheet
- Valid for 12 months from date of delivery
- Response to your inquiry within 24 hours
  
- We provide support in Chinese, English, French, German, Japanese and Spanish
- Extensive multi-media technical resources to help you
- We investigate all quality concerns to ensure our products perform to the highest standards

If the product does not perform as described on this datasheet, we will offer a refund or replacement. For full details of the Abpromise, please visit <https://www.abcam.cn/abpromise> or contact our technical team.

## **Terms and conditions**

---

- Guarantee only valid for products bought direct from Abcam or one of our authorized distributors