

# Anti-BACH1/BRIP1 antibody - N-terminal ab151509

**3 References**   **3 图像**

### 概述

产品名称	Anti-BACH1/BRIP1抗体- N-terminal
描述	兔多克隆抗体to BACH1/BRIP1 - N-terminal
宿主	Rabbit
经测试应用	适用于: WB, IHC-P, ICC/IF
种属反应性	与反应: Human
免疫原	Recombinant fragment, corresponding to a region within N terminal amino acids 52-291 of Human BACH1/BRIP1.
阳性对照	HeLa whole cell lysate ( <a href="#">ab150035</a> ); 293T cells; Human SAS xenograft tissue.
常规说明	<p>The Life Science industry has been in the grips of a reproducibility crisis for a number of years. Abcam is leading the way in addressing this with our range of recombinant monoclonal antibodies and knockout edited cell lines for gold-standard validation. Please check that this product meets your needs before purchasing.</p> <p>If you have any questions, special requirements or concerns, please send us an inquiry and/or contact our Support team ahead of purchase. Recommended alternatives for this product can be found below, along with publications, customer reviews and Q&amp;As</p>

### 性能

形式	Liquid
存放说明	Shipped at 4°C. Upon delivery aliquot. Store at -20°C or -80°C. Avoid freeze / thaw cycle.
存储溶液	<p>pH: 7.00</p> <p>Preservative: 0.01% Thimerosal (merthiolate)</p> <p>Constituents: 79.99% PBS, 20% Glycerol (glycerin, glycerine)</p>
纯度	Immunogen affinity purified
克隆	多克隆
同种型	IgG

### 应用

The Abpromise guarantee

**Abpromise™** 承诺保证使用ab151509于以下的经测试应用

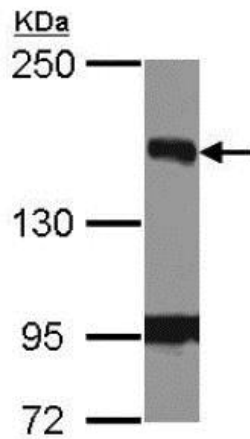
“应用说明”部分 下显示的仅为推荐的起始稀释度;实际最佳的稀释度/浓度应由使用者检定。

应用	Ab评论	说明
WB		1/500 - 1/3000. Predicted molecular weight: 140 kDa.
IHC-P		1/100 - 1/1000.
ICC/IF		1/100 - 1/1000.

## 靶标

功能	DNA-dependent ATPase and 5' to 3' DNA helicase required for the maintenance of chromosomal stability. Acts late in the Fanconi anemia pathway, after FANCD2 ubiquitination. Involved in the repair of DNA double-strand breaks by homologous recombination in a manner that depends on its association with BRCA1.
组织特异性	Ubiquitously expressed, with highest levels in testis.
疾病相关	<p>Defects in BRIP1 are a cause of susceptibility to breast cancer (BC) [MIM:114480]. A common malignancy originating from breast epithelial tissue. Breast neoplasms can be distinguished by their histologic pattern. Invasive ductal carcinoma is by far the most common type. Breast cancer is etiologically and genetically heterogeneous. Important genetic factors have been indicated by familial occurrence and bilateral involvement. Mutations at more than one locus can be involved in different families or even in the same case.</p> <p>Defects in BRIP1 are the cause of Fanconi anemia complementation group J (FANCI) [MIM:609054]. It is a disorder affecting all bone marrow elements and resulting in anemia, leukopenia and thrombopenia. It is associated with cardiac, renal and limb malformations, dermal pigmentary changes, and a predisposition to the development of malignancies. At the cellular level it is associated with hypersensitivity to DNA-damaging agents, chromosomal instability (increased chromosome breakage) and defective DNA repair.</p>
序列相似性	<p>Belongs to the DEAD box helicase family. DEAH subfamily.</p> <p>Contains 1 helicase ATP-binding domain.</p>
结构域	4Fe-4S iron-sulfur-binding is required for helicase activity (PubMed:20639400).
翻译后修饰	Phosphorylated. Phosphorylation is necessary for interaction with BRCA1, and is cell-cycle regulated.
细胞定位	Nucleus.

## 图片

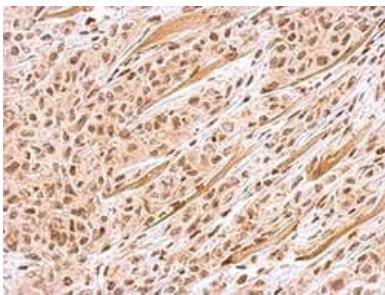


Western blot - Anti-BACH1/BRIP1 antibody - N-terminal (ab151509)

Anti-BACH1/BRIP1 antibody - N-terminal (ab151509) at 1/1000 dilution + HeLa whole cell lysate at 30  $\mu$ g

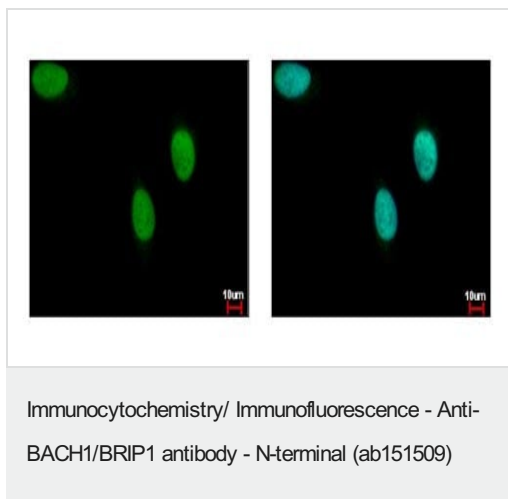
**Predicted band size:** 140 kDa

5% SDS-PAGE.



Immunohistochemistry (Formalin/PFA-fixed paraffin-embedded sections) - Anti-BACH1/BRIP1 antibody - N-terminal (ab151509)

Immunohistochemical analysis of paraffin-embedded Human SAS xenograft tissue labeling BACH1/BRIP1 with ab151509 at 1/500 dilution.



Immunofluorescent analysis of paraformaldehyde-fixed 293T cells labeling BACH1/BRIP1 with ab151509 at 1/500 dilution. Right image shows cells co-stained with Hoechst 33343.

**Please note:** All products are "FOR RESEARCH USE ONLY. NOT FOR USE IN DIAGNOSTIC PROCEDURES"

### Our Abpromise to you: Quality guaranteed and expert technical support

---

- Replacement or refund for products not performing as stated on the datasheet
- Valid for 12 months from date of delivery
- Response to your inquiry within 24 hours
- We provide support in Chinese, English, French, German, Japanese and Spanish
- Extensive multi-media technical resources to help you
- We investigate all quality concerns to ensure our products perform to the highest standards

If the product does not perform as described on this datasheet, we will offer a refund or replacement. For full details of the Abpromise, please visit <https://www.abcam.cn/abpromise> or contact our technical team.

### Terms and conditions

---

- Guarantee only valid for products bought direct from Abcam or one of our authorized distributors