


Anti-B4GALT3 antibody ab74825

[1 References](#) [2 图像](#)

概述

产品名称	Anti-B4GALT3抗体
描述	兔多克隆抗体to B4GALT3
宿主	Rabbit
经测试应用	适用于: WB, IHC-P
种属反应性	与反应: Human 预测可用于: Mouse, Rat 
免疫原	Synthesized peptide derived from an internal region of human B4GALT3
阳性对照	WB: extracts from HepG2 cells, HeLa cells and Jurkat cells IHC-P: human liver carcinoma tissue
常规说明	<p>The Life Science industry has been in the grips of a reproducibility crisis for a number of years. Abcam is leading the way in addressing this with our range of recombinant monoclonal antibodies and knockout edited cell lines for gold-standard validation. Please check that this product meets your needs before purchasing.</p> <p>If you have any questions, special requirements or concerns, please send us an inquiry and/or contact our Support team ahead of purchase. Recommended alternatives for this product can be found below, along with publications, customer reviews and Q&As</p>

性能

形式	Liquid
存放说明	Shipped at 4°C. Upon delivery aliquot and store at -20°C. Avoid freeze / thaw cycles.
存储溶液	pH: 7.40 Preservative: 0.02% Sodium azide Constituents: 50% Glycerol (glycerin, glycerine), 0.87% Sodium chloride, PBS
纯度	Without Mg ²⁺ and Ca ²⁺ Immunogen affinity purified
纯化说明	The antibody was affinity purified from rabbit antiserum by affinity chromatography using epitope specific immunogen.
克隆	多克隆
同种型	IgG

应用

The Abpromise guarantee **Abpromise™** 承诺保证使用 ab74825 于以下的经测试应用

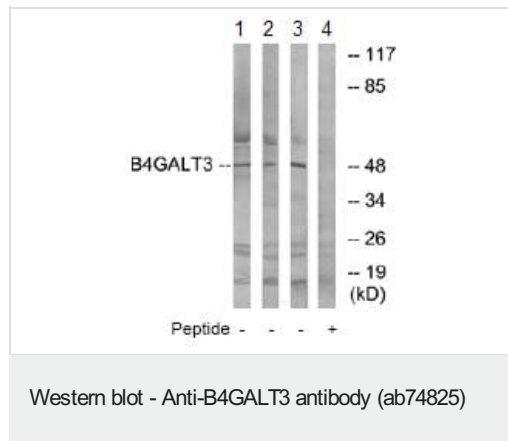
“应用说明”部分 下显示的仅为推荐的起始稀释度;实际最佳的稀释度/浓度应由使用者检定。

应用	Ab评论	说明
WB		1/500 - 1/1000. Predicted molecular weight: 44 kDa.
IHC-P		Use at an assay dependent concentration.

靶标

功能	Responsible for the synthesis of complex-type N-linked oligosaccharides in many glycoproteins as well as the carbohydrate moieties of glycolipids.
组织特异性	Found in various tissues. Highest expression in placenta, prostate, testis, ovary, intestine and muscle, and in fetal brain.
通路	Protein modification; protein glycosylation.
序列相似性	Belongs to the glycosyltransferase 7 family.
细胞定位	Golgi apparatus > Golgi stack membrane. Trans cisternae of Golgi stack.

图片



All lanes : Anti-B4GALT3 antibody (ab74825) at 1/500 dilution

Lane 1 : extracts from HepG2 cells

Lane 2 : extracts from HeLa cells

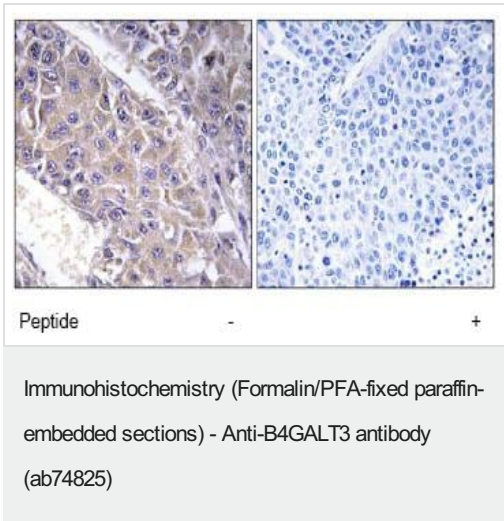
Lane 3 : extracts from Jurkat cells

Lane 4 : extracts from Jurkat cells with immunizing peptide at 10 µg

Lysates/proteins at 30 µg per lane.

Predicted band size: 44 kDa

Observed band size: 44 kDa



ab74825, at a dilution of 1/50, staining B4GALT3 in paraffin embedded human liver carcinoma tissue sections by Immunohistochemistry in the absence (left image) or presence (right image) of the immunizing peptide.

Please note: All products are "FOR RESEARCH USE ONLY. NOT FOR USE IN DIAGNOSTIC PROCEDURES"

Our Abpromise to you: Quality guaranteed and expert technical support

- Replacement or refund for products not performing as stated on the datasheet
- Valid for 12 months from date of delivery
- Response to your inquiry within 24 hours

- We provide support in Chinese, English, French, German, Japanese and Spanish
- Extensive multi-media technical resources to help you
- We investigate all quality concerns to ensure our products perform to the highest standards

If the product does not perform as described on this datasheet, we will offer a refund or replacement. For full details of the Abpromise, please visit <https://www.abcam.cn/abpromise> or contact our technical team.

Terms and conditions

- Guarantee only valid for products bought direct from Abcam or one of our authorized distributors