

Anti-B1R antibody ab75148

★★★★★ [2 Abreviews](#) [2 References](#) [2 图像](#)

概述

产品名称	Anti-B1R抗体
描述	兔多克隆抗体to B1R
宿主	Rabbit
经测试应用	适用于: WB, ICC/IF
种属反应性	与反应: Human
免疫原	Synthetic peptide corresponding to Human B1R (internal sequence).
阳性对照	Extracts from K562 cells. LOVO cells.
常规说明	<p>The Life Science industry has been in the grips of a reproducibility crisis for a number of years. Abcam is leading the way in addressing this with our range of recombinant monoclonal antibodies and knockout edited cell lines for gold-standard validation. Please check that this product meets your needs before purchasing.</p> <p>If you have any questions, special requirements or concerns, please send us an inquiry and/or contact our Support team ahead of purchase. Recommended alternatives for this product can be found below, along with publications, customer reviews and Q&As</p>

性能

形式	Liquid
存放说明	Shipped at 4°C. Upon delivery aliquot and store at -20°C. Avoid repeated freeze / thaw cycles.
存储溶液	<p>pH: 7.40</p> <p>Preservative: 0.02% Sodium azide</p> <p>Constituents: 50% Glycerol (glycerin, glycerine), 0.87% Sodium chloride, PBS</p> <p>Without Mg2+ and Ca2+</p>
纯度	Immunogen affinity purified
克隆	多克隆
同种型	IgG

应用

The Abpromise guarantee

Abpromise™ 承诺保证使用ab75148于以下的经测试应用

“应用说明”部分 下显示的仅为推荐的起始稀释度;实际最佳的稀释度/浓度应由使用者检定。

应用	Ab评论	说明
WB	★★★★★ (1)	1/500 - 1/1000. Predicted molecular weight: 40 kDa.
ICC/IF		1/500 - 1/1000.

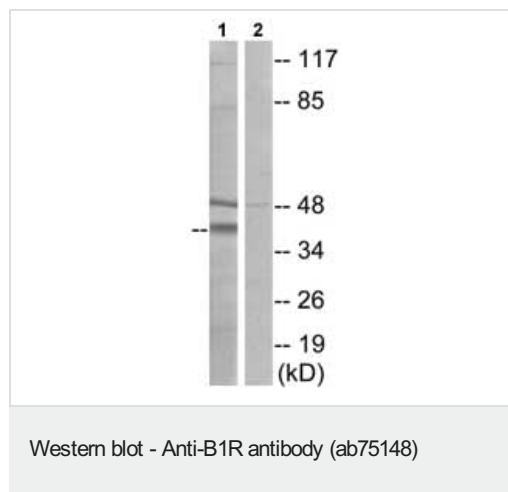
靶标

功能 This is a receptor for bradykinin. Could be a factor in chronic pain and inflammation.

序列相似性 Belongs to the G-protein coupled receptor 1 family. Bradykinin receptor subfamily. BDKRB1 sub-subfamily.

细胞定位 Cell membrane.

图片



All lanes : Anti-B1R antibody (ab75148) at 1/500 dilution

Lane 1 : Extracts from K562 cells

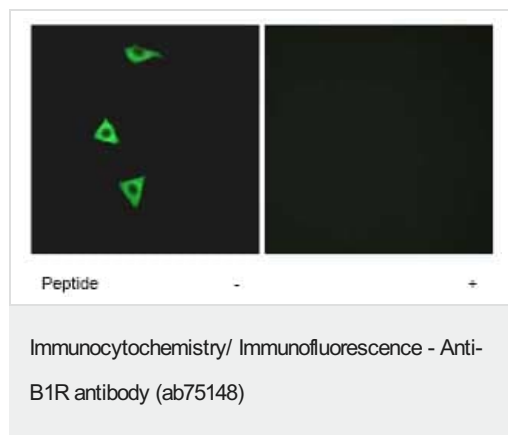
Lane 2 : Extracts from K562 cells with immunising peptide at 5 µg

Lysates/proteins at 25 µg per lane.

Predicted band size: 40 kDa

Observed band size: 40 kDa

Additional bands at: 48 kDa, 50 kDa, 82 kDa. We are unsure as to the identity of these extra bands.



Immunofluorescence analysis of B1R in LOVO cells using ab75148, at 1/500 dilution, with (right panel) or without (left panel) preincubation with the immunizing peptide.

Please note: All products are "FOR RESEARCH USE ONLY. NOT FOR USE IN DIAGNOSTIC PROCEDURES"

Our Abpromise to you: Quality guaranteed and expert technical support

- Replacement or refund for products not performing as stated on the datasheet
- Valid for 12 months from date of delivery
- Response to your inquiry within 24 hours

- We provide support in Chinese, English, French, German, Japanese and Spanish
- Extensive multi-media technical resources to help you
- We investigate all quality concerns to ensure our products perform to the highest standards

If the product does not perform as described on this datasheet, we will offer a refund or replacement. For full details of the Abpromise, please visit <https://www.abcam.cn/abpromise> or contact our technical team.

Terms and conditions

- Guarantee only valid for products bought direct from Abcam or one of our authorized distributors