

### Anti-B MyB (phospho S577 + S581) antibody ab61000

**2 References**   [1 图像](#)

#### 概述

产品名称	Anti-B MyB (phospho S577 + S581)抗体
描述	兔多克隆抗体to B MyB (phospho S577 + S581)
宿主	Rabbit
经测试应用	适用于: WB
种属反应性	与反应: Human 预测可用于: Rat 
免疫原	Synthetic peptide corresponding to Human B MyB (phospho S577 + S581). Database link: <a href="#">P10244</a>
常规说明	<p>The Life Science industry has been in the grips of a reproducibility crisis for a number of years. Abcam is leading the way in addressing this with our range of recombinant monoclonal antibodies and knockout edited cell lines for gold-standard validation. Please check that this product meets your needs before purchasing.</p> <p>If you have any questions, special requirements or concerns, please send us an inquiry and/or contact our Support team ahead of purchase. Recommended alternatives for this product can be found below, along with publications, customer reviews and Q&amp;As</p>

#### 性能

形式	Liquid
存放说明	Shipped at 4°C. Store at -20°C. Stable for 12 months at -20°C.
存储溶液	pH: 7.40 Preservative: 0.02% Sodium azide Constituents: PBS, 50% Glycerol (glycerin, glycerine), 0.87% Sodium chloride
纯度	Without Mg <sup>2+</sup> and Ca <sup>2+</sup> Immunogen affinity purified
纯化说明	Affinity purified from rabbit antiserum by affinity-chromatography using epitope-specific phosphopeptide. The antibody against non-phosphopeptide was removed by chromatography using non-phosphopeptide corresponding to the phosphorylation site.
克隆	多克隆
同种型	IgG

应用

The Abpromise guarantee      **Abpromise™**承诺保证使用ab61000于以下的经测试应用

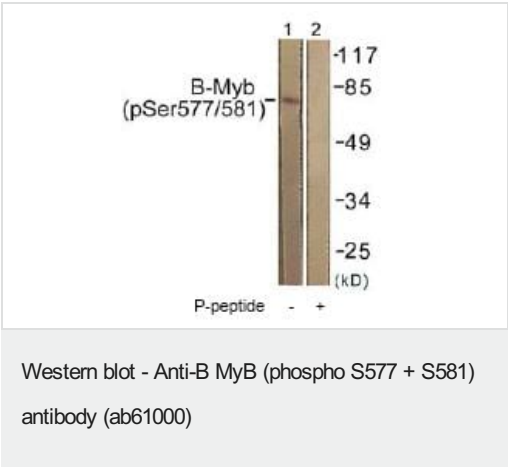
“应用说明”部分 下显示的仅为推荐的起始稀释度;实际最佳的稀释度/浓度应由使用者检定。

应用	Ab评论	说明
WB		1/500 - 1/1000. Detects a band of approximately 79 kDa (predicted molecular weight: 79 kDa).

靶标

功能	Transcription factor involved in the regulation of cell survival, proliferation, and differentiation. Transactivates the expression of the CLU gene.
序列相似性	Contains 3 HTH myb-type DNA-binding domains.
翻译后修饰	Phosphorylated by cyclin A/CDK2 during S-phase. Phosphorylation at Thr-520 is probably involved in transcriptional activity.
细胞定位	Nucleus.

图片



**All lanes :** Anti-B MyB (phospho S577 + S581) antibody (ab61000) at 1/500 dilution

**Lane 1 :** extracts from K562 cells

**Lane 2 :** extracts from K562 cells with immunizing phosphopeptide

**Predicted band size:** 79 kDa

**Observed band size:** 79 kDa

**Please note:** All products are "FOR RESEARCH USE ONLY. NOT FOR USE IN DIAGNOSTIC PROCEDURES"

Our Abpromise to you: Quality guaranteed and expert technical support

- Replacement or refund for products not performing as stated on the datasheet
- Valid for 12 months from date of delivery
- Response to your inquiry within 24 hours
- We provide support in Chinese, English, French, German, Japanese and Spanish
- Extensive multi-media technical resources to help you

- We investigate all quality concerns to ensure our products perform to the highest standards

If the product does not perform as described on this datasheet, we will offer a refund or replacement. For full details of the Abpromise, please visit <https://www.abcam.cn/abpromise> or contact our technical team.

### **Terms and conditions**

---

- Guarantee only valid for products bought direct from Abcam or one of our authorized distributors