

Anti-ATP7b antibody [EPR6794] ab124973

重组 RabMAb

☆☆☆☆☆ 1 Abreviews 21 References 7 图像

概述

产品名称	Anti-ATP7b抗体[EPR6794]
描述	兔单克隆抗体[EPR6794] to ATP7b
宿主	Rabbit
经测试应用	适用于: Flow Cyt (Intra), WB, ICC/IF 不适用于: IHC-P or IP
种属反应性	与反应: Human
免疫原	Synthetic peptide within Human ATP7b aa 1400 to the C-terminus (C terminal). The exact sequence is proprietary. Database link: P35670
阳性对照	WB: Caco-2 and HepG2 whole cell lysate (ab7900). Flow Cyt (intra): HepG2 cells. ICC/IF: HepG2 cells.
常规说明	<p>This product is a recombinant monoclonal antibody, which offers several advantages including:</p> <ul style="list-style-type: none">- High batch-to-batch consistency and reproducibility- Improved sensitivity and specificity- Long-term security of supply- Animal-free production <p>For more information see here.</p> <p>Our RabMAb[®] technology is a patented hybridoma-based technology for making rabbit monoclonal antibodies. For details on our patents, please refer to RabMAb[®] patents.</p> <p>Mouse, Rat: We have preliminary internal testing data to indicate this antibody may not react with these species. Please contact us for more information.</p>

性能

形式	Liquid
存放说明	Shipped at 4°C. Store at -20°C. Stable for 12 months at -20°C.
解离常数 (K _D)	K _D = 1.40 x 10 ⁻¹² M





[Learn more about K_D](#)

存储溶液	pH: 7.2 Preservative: 0.01% Sodium azide Constituents: 59% PBS, 40% Glycerol, 0.05% BSA
纯度	Protein A purified
克隆	单克隆
克隆编号	EPR6794
同种型	IgG

应用

The Abpromise guarantee **Abpromise™** 承诺保证使用 ab124973 于以下的经测试应用

“应用说明”部分 下显示的仅为推荐的起始稀释度; 实际最佳的稀释度/浓度应由使用者检定。

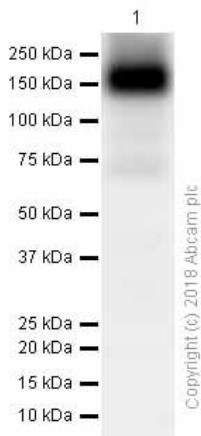
应用	Ab 评论	说明
Flow Cyt (Intra)		1/10 - 1/100. ab172730 - Rabbit monoclonal IgG, is suitable for use as an isotype control with this antibody.
WB	★☆☆☆☆ (1)	1/1000 - 1/10000. Predicted molecular weight: 157 kDa.
ICC/IF		1/100 - 1/250.

应用说明 Is unsuitable for IHC-P or IP.

靶标

功能	Involved in the export of copper out of the cells, such as the efflux of hepatic copper into the bile.
组织特异性	Most abundant in liver and kidney and also found in brain. Isoform 2 is expressed in brain but not in liver. The cleaved form WND/140 kDa is found in liver cell lines and other tissues.
疾病相关	Defects in ATP7B are the cause of Wilson disease (WD) [MIM:277900]. WD is an autosomal recessive disorder of copper metabolism in which copper cannot be incorporated into ceruloplasmin in liver, and cannot be excreted from the liver into the bile. Copper accumulates in the liver and subsequently in the brain and kidney. The disease is characterized by neurologic manifestations and signs of cirrhosis.
序列相似性	Belongs to the cation transport ATPase (P-type) (TC 3.A.3) family. Type IB subfamily. Contains 6 HMA domains.
翻译后修饰	Isoform 1 may be proteolytically cleaved at the N-terminus to produce the WND/140 kDa form.
细胞定位	Cytoplasm; Mitochondrion and Golgi apparatus > trans-Golgi network membrane. Predominantly found in the trans-Golgi network (TGN). Not redistributed to the plasma membrane in response to elevated copper levels.

图片



Western blot - Anti-ATP7b antibody [EPR6794]
(ab124973)

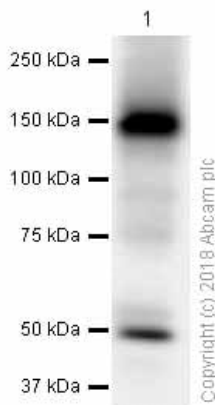
Anti-ATP7b antibody [EPR6794] (ab124973) at 1/10000 dilution
(Purified) + Caco-2 (Human colorectal adenocarcinoma epithelial cell) whole cell lysates at 15 µg

Secondary

Goat Anti-Rabbit IgG H&L (HRP) ([ab97051](#)) at 1/20000 dilution

Predicted band size: 157 kDa

Observed band size: 157 kDa



Western blot - Anti-ATP7b antibody [EPR6794]
(ab124973)

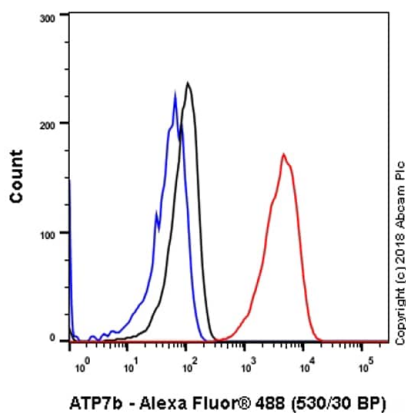
Anti-ATP7b antibody [EPR6794] (ab124973) at 1/1000 dilution
(Purified) + HepG2 (Human hepatocellular carcinoma epithelial cell) whole cell lysates at 15 µg

Secondary

Goat Anti-Rabbit IgG H&L (HRP) ([ab97051](#)) at 1/20000 dilution

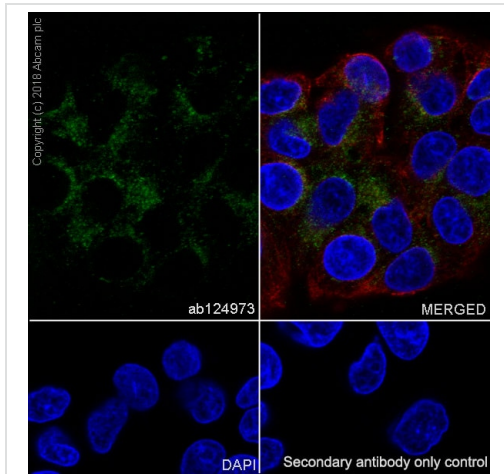
Predicted band size: 157 kDa

Observed band size: 157 kDa



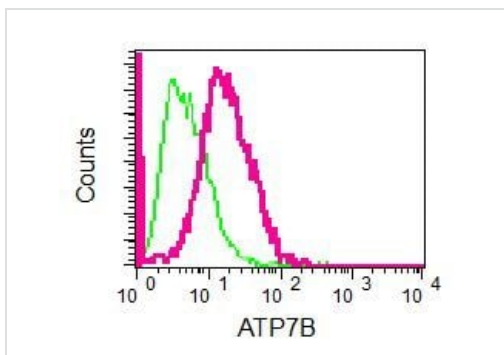
Flow Cytometry (Intracellular) - Anti-ATP7b antibody
[EPR6794] (ab124973)

Intracellular Flow Cytometry analysis of HepG2 (Human hepatocellular carcinoma epithelial cell) cells labeling ATP7b with purified ab124973 at 1/20 dilution (10 µg/ml) (Red). Cells were fixed with 4% Paraformaldehyde and permeabilised with 90% Methanol. A Goat anti rabbit IgG (Alexa Fluor® 488, [ab150077](#)) secondary antibody was used at 1/2000. Isotype control - Rabbit monoclonal IgG (Black). Unlabeled control - Cell without incubation with primary antibody and secondary antibody (Blue).



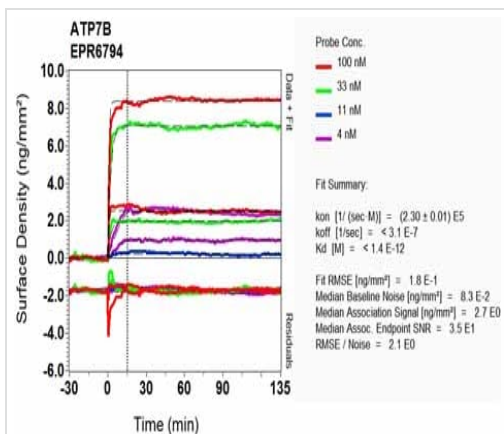
Immunocytochemistry/ Immunofluorescence - Anti-ATP7b antibody [EPR6794] (ab124973)

Immunocytochemistry/ Immunofluorescence analysis of HepG2 (Human hepatocellular carcinoma epithelial cell) cells labeling ATP7b with purified ab124973 at 1:100 dilution (1.2 µg/ml). Cells were fixed in 4% Paraformaldehyde and permeabilized with 0.1% tritonX-100. Cells were counterstained with Ab195889 Anti-alpha Tubulin antibody [DM1A] - Microtubule Marker (Alexa Fluor® 594) 1:200 (2.5 µg/ml). Goat anti rabbit IgG (Alexa Fluor® 488, **ab150077**) was used as the secondary antibody at 1:1000 (2 µg/ml) dilution. DAPI (blue) was used as nuclear counterstain. PBS instead of the primary antibody was used as the secondary antibody only control.



Flow Cytometry (Intracellular) - Anti-ATP7b antibody [EPR6794] (ab124973)

Intracellular flow cytometric analysis of permeabilized HepG2 cells using unpurified anti-ATP7B RabMAb in red (ab124973) or a rabbit IgG in green (negative).



OR-D Scanning - Anti-ATP7b antibody [EPR6794] (ab124973)

Equilibrium disassociation constant (K_D)

Learn more about K_D

[Click here to learn more about \$K_D\$](#)

Why choose a recombinant antibody?



Research with confidence
Consistent and reproducible results



Long-term and scalable supply
Recombinant technology



Success from the first experiment
Confirmed specificity



Ethical standards compliant
Animal-free production

Anti-ATP7b antibody [EPR6794] (ab124973)

Please note: All products are "FOR RESEARCH USE ONLY. NOT FOR USE IN DIAGNOSTIC PROCEDURES"

Our Abpromise to you: Quality guaranteed and expert technical support

- Replacement or refund for products not performing as stated on the datasheet
- Valid for 12 months from date of delivery
- Response to your inquiry within 24 hours
- We provide support in Chinese, English, French, German, Japanese and Spanish
- Extensive multi-media technical resources to help you
- We investigate all quality concerns to ensure our products perform to the highest standards

If the product does not perform as described on this datasheet, we will offer a refund or replacement. For full details of the Abpromise, please visit <https://www.abcam.cn/abpromise> or contact our technical team.

Terms and conditions

- Guarantee only valid for products bought direct from Abcam or one of our authorized distributors