


Anti-ATP6V1B2 antibody ab73404

★★★★★ [1 Abreviews](#) [20 References](#) [5 图像](#)

概述

产品名称	Anti-ATP6V1B2抗体
描述	兔多克隆抗体to ATP6V1B2
宿主	Rabbit
经测试应用	适用于: IP, IHC-P, WB, ICC/IF
种属反应性	与反应: Mouse, Rat, Human 预测可用于: Cow, Cynomolgus monkey, Orangutan 
免疫原	Synthetic peptide conjugated to KLH derived from within residues 450 to the C-terminus of Mouse ATP6V1B2. 参阅Abcam的专有抗源政策(Peptide available as ab74898 .)
阳性对照	This antibody gave a positive signal in the following tissue lysates: Rat hippocampus; Mouse hippocampus; Mouse kidney; Mouse testis; Human kidney; Human testis.
常规说明	<p>The Life Science industry has been in the grips of a reproducibility crisis for a number of years. Abcam is leading the way in addressing this with our range of recombinant monoclonal antibodies and knockout edited cell lines for gold-standard validation. Please check that this product meets your needs before purchasing.</p> <p>If you have any questions, special requirements or concerns, please send us an inquiry and/or contact our Support team ahead of purchase. Recommended alternatives for this product can be found below, along with publications, customer reviews and Q&As</p>

性能

形式	Liquid
存放说明	Shipped at 4°C. Store at +4°C short term (1-2 weeks). Upon delivery aliquot. Store at -20°C or -80°C. Avoid freeze / thaw cycle.
存储溶液	pH: 7.40 Preservative: 0.02% Sodium azide Constituent: PBS
纯度	Immunogen affinity purified

Batches of this product that have a concentration < 1mg/ml may have BSA added as a stabilising agent. If you would like information about the formulation of a specific lot, please contact our scientific support team who will be happy to help.

克隆 多克隆
同种型 IgG

应用

The Abpromise guarantee **Abpromise™** 承诺保证使用ab73404于以下的经测试应用

“应用说明”部分 下显示的仅为推荐的起始稀释度;实际最佳的稀释度/浓度应由使用者检定。

应用	Ab评论	说明
IP		Use a concentration of 5 µg/ml.
IHC-P	★★★★★ (1)	Use a concentration of 0.1 - 0.5 µg/ml. Perform heat mediated antigen retrieval before commencing with IHC staining protocol.
WB		Use a concentration of 1 µg/ml. Detects a band of approximately 57 kDa (predicted molecular weight: 57 kDa).
ICC/IF		Use a concentration of 5 µg/ml.

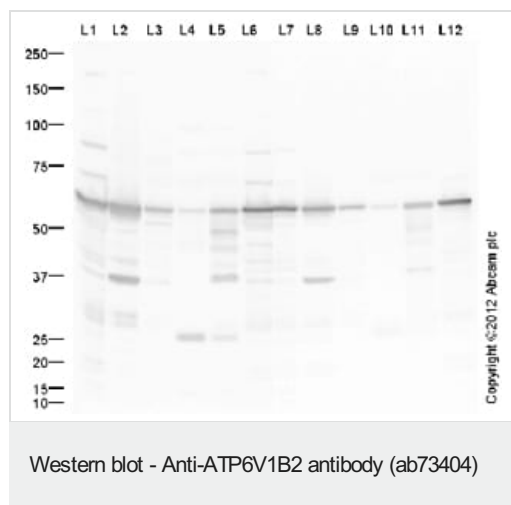
靶标

功能 Non-catalytic subunit of the peripheral V1 complex of vacuolar ATPase. V-ATPase is responsible for acidifying a variety of intracellular compartments in eukaryotic cells.

序列相似性 Belongs to the ATPase alpha/beta chains family.

细胞定位 Endomembrane system. Melanosome. Endomembrane. Identified by mass spectrometry in melanosome fractions from stage I to stage IV.

图片



All lanes : Anti-ATP6V1B2 antibody (ab73404) at 1 µg/ml

Lane 1 : Hippocampus (Mouse) Tissue Lysate

Lanes 2 & 8 : Kidney (Mouse) Tissue Lysate

Lanes 3 & 9 : Testis (Mouse) Tissue Lysate

Lanes 4 & 10 : Human testis tissue lysate - total protein (**ab30257**)

Lanes 5 & 11 : Human kidney tissue lysate - total protein (**ab30203**)

Lanes 6 & 12 : Rat Hippocampus Tissue Lysate

Lane 7 : Hippocampus (Mouse) Tissue Lysate

Lysates/proteins at 10 µg per lane.

Secondary

All lanes : Goat polyclonal to Rabbit IgG - H&L - Pre-Adsorbed

(HRP) ([ab65484](#)) at 1/3000 dilution

Performed under reducing conditions.

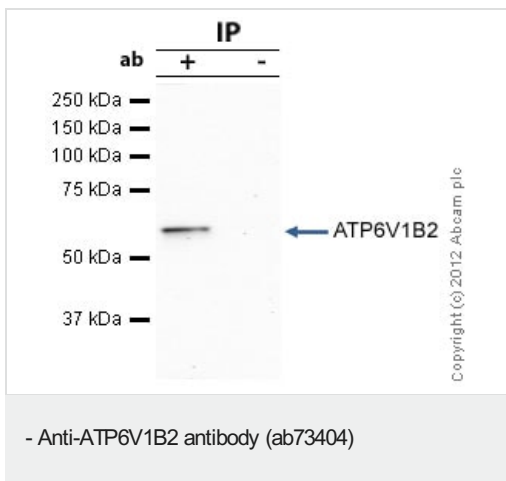
Predicted band size: 57 kDa

Observed band size: 57 kDa

Additional bands at: 37 kDa. We are unsure as to the identity of these extra bands.

Exposure time: 30 seconds

Lanes 1-6 were blocked with 5% BSA, Lanes 7-12 were blocked with 3% milk. Abcam recommends using milk as the blocking agent. Abcam welcomes customer feedback and would appreciate any comments regarding this product and the data presented above.



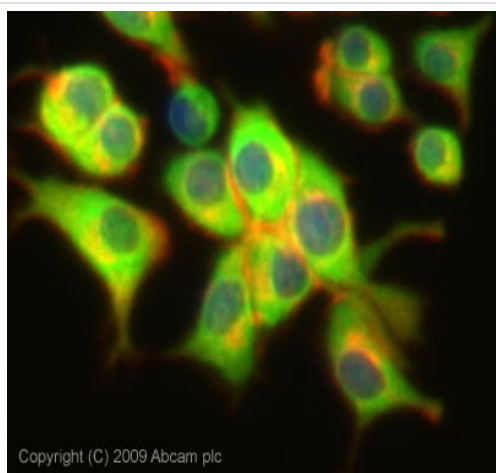
ATP6V1B2 was immunoprecipitated using 0.5mg Mouse Testis tissue lysate, 5µg of Rabbit polyclonal to ATP6V1B2 and 50µl of protein G magnetic beads (+). No antibody was added to the control (-).

The antibody was incubated under agitation with Protein G beads for 10min, Mouse Testis tissue lysate lysate diluted in RIPA buffer was added to each sample and incubated for a further 10min under agitation.

Proteins were eluted by addition of 40µl SDS loading buffer and incubated for 10min at 70°C; 10µl of each sample was separated on a SDS PAGE gel, transferred to a nitrocellulose membrane, blocked with 5% BSA and probed with ab73404.

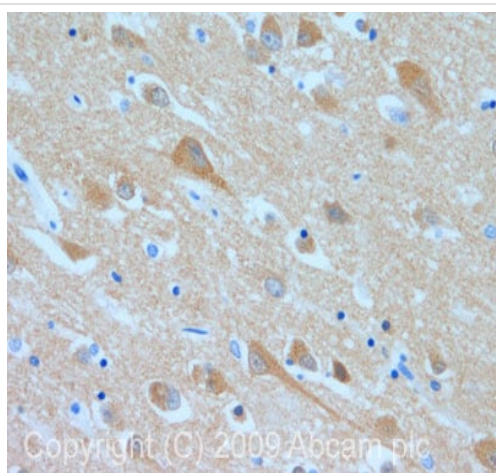
Secondary: Mouse monoclonal [SB62a] Secondary Antibody to Rabbit IgG light chain (HRP) ([ab99697](#)).

Band: 57kDa; ATP6V1B2



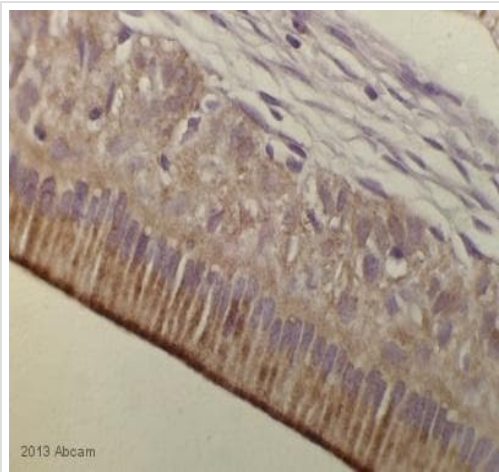
Immunocytochemistry/ Immunofluorescence - Anti-ATP6V1B2 antibody (ab73404)

ICC/IF image of ab73404 stained PC12 cells. The cells were 100% methanol fixed (5 min) and then incubated in 1%BSA / 10% normal goat serum / 0.3M glycine in 0.1% PBS-Tween for 1h to permeabilise the cells and block non-specific protein-protein interactions. The cells were then incubated with the antibody (ab73404, 5µg/ml) overnight at +4°C. The secondary antibody (green) was Alexa Fluor® 488 goat anti-rabbit IgG (H+L) used at a 1/1000 dilution for 1h. Alexa Fluor® 594 WGA was used to label plasma membranes (red) at a 1/200 dilution for 1h. DAPI was used to stain the cell nuclei (blue) at a concentration of 1.43µM. This antibody also gave a positive result in 4% PFA fixed (10 min) PC12 cells at 5µg/ml.



Immunohistochemistry (Formalin/PFA-fixed paraffin-embedded sections) - Anti-ATP6V1B2 antibody (ab73404)

IHC image of ATP6V1B2 staining in human hippocampus formalin fixed paraffin embedded tissue section, performed on a Leica Bond™ system using the standard protocol F. The section was pre-treated using heat mediated antigen retrieval with sodium citrate buffer (pH6, epitope retrieval solution 1) for 20 mins. The section was then incubated with ab73404, 0.5µg/ml, for 15 mins at room temperature and detected using an HRP conjugated compact polymer system. DAB was used as the chromogen. The section was then counterstained with haematoxylin and mounted with DPX.



Immunohistochemistry (Formalin/PFA-fixed paraffin-embedded sections) - Anti-ATP6V1B2 antibody (ab73404)

This image is courtesy of an anonymous Abreview

ab73404 staining RAT incisor tissue sections by Immunohistochemistry (IHC-P - paraformaldehyde-fixed, paraffin-embedded sections). Tissue was fixed with formaldehyde and blocked with 2.5% serum for 30 minutes at 22°C. Samples were incubated with primary antibody (1/1000 in 1% BSA/ 0.5% Triton X-100 in PBS) for 16 hours at 4°C. An undiluted peroxidase-conjugated Goat anti-rabbit IgG polyclonal was used as the secondary antibody.

Please note: All products are "FOR RESEARCH USE ONLY. NOT FOR USE IN DIAGNOSTIC PROCEDURES"

Our Abpromise to you: Quality guaranteed and expert technical support

- Replacement or refund for products not performing as stated on the datasheet
- Valid for 12 months from date of delivery
- Response to your inquiry within 24 hours
- We provide support in Chinese, English, French, German, Japanese and Spanish
- Extensive multi-media technical resources to help you
- We investigate all quality concerns to ensure our products perform to the highest standards

If the product does not perform as described on this datasheet, we will offer a refund or replacement. For full details of the Abpromise, please visit <https://www.abcam.cn/abpromise> or contact our technical team.

Terms and conditions

- Guarantee only valid for products bought direct from Abcam or one of our authorized distributors