

Anti-ATP5H antibody [7F9BG1] ab110275

★★★★★ [3 Abreviews](#) [16 References](#) [4 图像](#)

概述

产品名称	Anti-ATP5H抗体[7F9BG1]
描述	小鼠单克隆抗体[7F9BG1] to ATP5H
宿主	Mouse
经测试应用	适用于: WB, ICC/IF, Flow Cyt
种属反应性	与反应: Mouse, Rat, Cow, Human, African green monkey
免疫原	Full length native protein (purified). This information is proprietary to Abcam and/or its suppliers.
阳性对照	Isolated mitochondria from Human heart, Bovine heart, Rat heart, Mouse heart, and HepG2, Cultured Human embryonic lung-derived fibroblasts (strain MRC5), HeLa cells
常规说明	<p>For mouse and rat samples, this antibody will only recognize ATP5H in purified mitochondrial samples. Mouse and rat cell lysates and tissue homogenates are not recommended with this antibody.</p> <p>This antibody clone is manufactured by Abcam. If you require a custom buffer formulation or conjugation for your experiments, please contact orders@abcam.com.</p> <p>The Life Science industry has been in the grips of a reproducibility crisis for a number of years. Abcam is leading the way in addressing this with our range of recombinant monoclonal antibodies and knockout edited cell lines for gold-standard validation. Please check that this product meets your needs before purchasing.</p> <p>If you have any questions, special requirements or concerns, please send us an inquiry and/or contact our Support team ahead of purchase. Recommended alternatives for this product can be found below, along with publications, customer reviews and Q&As</p> <p>Product was previously marketed under the MitoSciences sub-brand.</p>

性能

形式	Liquid
存放说明	Shipped at 4°C. Store at +4°C. Do Not Freeze.
存储溶液	pH: 7.5 Preservative: 0.02% Sodium azide Constituent: HEPES buffered saline
纯度	Immunogen affinity purified

纯化说明	Near homogeneity as judged by SDS-PAGE. ab110275 was produced in vitro using hybridomas grown in serum-free medium, and then purified by biochemical fractionation.
克隆	单克隆
克隆编号	7F9BG1
同种型	IgG2b
轻链类型	kappa

应用

The Abpromise guarantee **Abpromise™** 承诺保证使用 ab110275 于以下的经测试应用

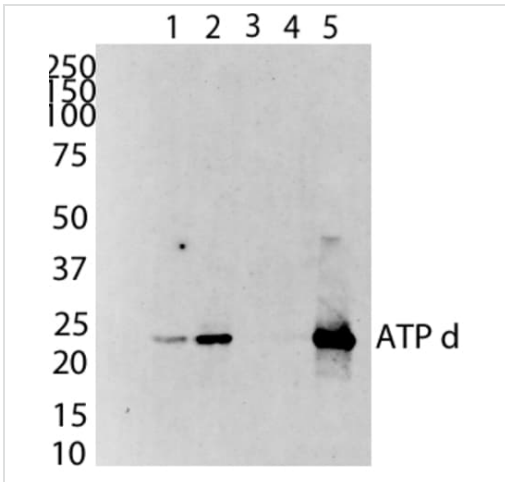
“应用说明”部分 下显示的仅为推荐的起始稀释度;实际最佳的稀释度/浓度应由使用者检定。

应用	Ab评论	说明
WB	★★★★★ (2)	Use a concentration of 1 µg/ml. Predicted molecular weight: 18 kDa.
ICC/IF		Use a concentration of 1 - 5 µg/ml. (heat-induced antigen-retrieval improvessignal)
Flow Cyt	★★★★★ (1)	Use a concentration of 1 µg/ml. ab170192 - Mouse monoclonal IgG2b, is suitable for use as an isotype control with this antibody.

靶标

功能	Mitochondrial membrane ATP synthase (F(1)F(0) ATP synthase or Complex V) produces ATP from ADP in the presence of a proton gradient across the membrane which is generated by electron transport complexes of the respiratory chain. F-type ATPases consist of two structural domains, F(1) - containing the extramembraneous catalytic core, and F(0) - containing the membrane proton channel, linked together by a central stalk and a peripheral stalk. During catalysis, ATP synthesis in the catalytic domain of F(1) is coupled via a rotary mechanism of the central stalk subunits to proton translocation. Part of the complex F(0) domain and the peripheric stalk, which acts as a stator to hold the catalytic alpha(3)beta(3) subcomplex and subunit a/ATP6 static relative to the rotary elements.
序列相似性	Belongs to the ATPase d subunit family.
细胞定位	Mitochondrion. Mitochondrion inner membrane.

图片



Western blot - Anti-ATP5H antibody [7F9BG1] (ab110275)

All lanes : Anti-ATP5H antibody [7F9BG1] (ab110275) at 1 µg/ml

Lane 1 : HDFn (human) cell lysates at 20 µg

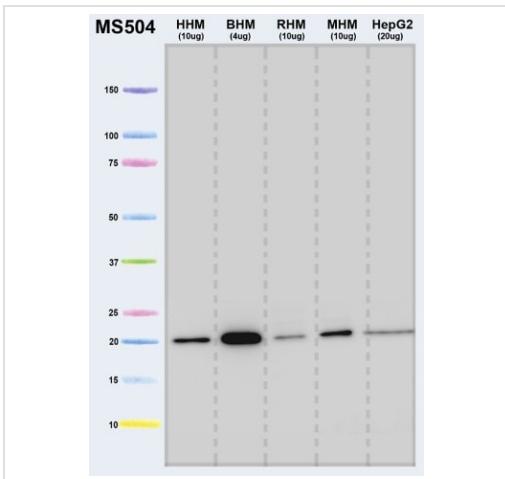
Lane 2 : COS-7 (African green monkey kidney fibroblast-like cell line) cell lysates at 20 µg

Lane 3 : H4IIE (rat) cell lysates at 20 µg

Lane 4 : MEF (mouse) cell lysates at 20 µg

Lane 5 : bovine heart mitochondria lysates at 5 µg

Predicted band size: 18 kDa



Western blot - Anti-ATP5H antibody [7F9BG1] (ab110275)

All lanes : Anti-ATP5H antibody [7F9BG1] (ab110275) at 1/1 dilution

Lane 1 : Human heart mitochondria at 10 µg

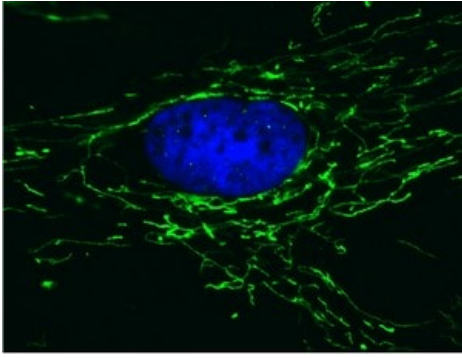
Lane 2 : Bovine heart mitochondria at 4 µg

Lane 3 : Rat heart mitochondria at 10 µg

Lane 4 : Mouse heart mitochondria at 10 µg

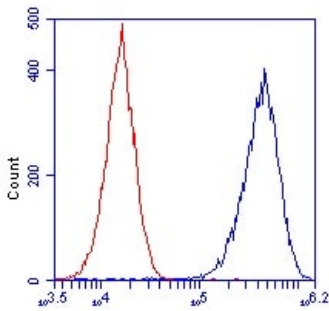
Lane 5 : HepG2 mitochondria at 20 µg

Predicted band size: 18 kDa



Immunocytochemistry/ Immunofluorescence - Anti-ATP5H antibody [7F9BG1] (ab110275)

Mitochondrial localization of ATP5H. Cultured Human embryonic lung-derived fibroblasts (strain MRC5) were fixed, permeabilized and then labeled with ab110275 (5 $\mu\text{g/ml}$) followed by an AlexaFluor® 488-conjugated-goat-anti-mouse IgG(H+L) secondary antibody (2 $\mu\text{g/ml}$).



Flow Cytometry - Anti-ATP5H antibody [7F9BG1] (ab110275)

HeLa cells were stained with 1 $\mu\text{g/mL}$ ab110275 (blue) or an equal amount of an isotype control antibody (red) and analyzed by flow cytometry.

Please note: All products are "FOR RESEARCH USE ONLY. NOT FOR USE IN DIAGNOSTIC PROCEDURES"

Our Abpromise to you: Quality guaranteed and expert technical support

- Replacement or refund for products not performing as stated on the datasheet
- Valid for 12 months from date of delivery
- Response to your inquiry within 24 hours
- We provide support in Chinese, English, French, German, Japanese and Spanish
- Extensive multi-media technical resources to help you
- We investigate all quality concerns to ensure our products perform to the highest standards

If the product does not perform as described on this datasheet, we will offer a refund or replacement. For full details of the Abpromise, please visit <https://www.abcam.cn/abpromise> or contact our technical team.

Terms and conditions

- Guarantee only valid for products bought direct from Abcam or one of our authorized distributors