

### Anti-ATP11B antibody ab105377

#### 3 图像

#### 概述

产品名称	Anti-ATP11B抗体
描述	兔多克隆抗体to ATP11B
宿主	Rabbit
经测试应用	适用于: WB, ICC
种属反应性	与反应: Human
免疫原	Synthetic peptide corresponding to Human ATP11B (N terminal). 19 amino acid peptide near the N-terminus (NP_055431). Database link: <a href="#">Q9Y2G3</a>
阳性对照	K562 cell lysate
常规说明	<p>The Life Science industry has been in the grips of a reproducibility crisis for a number of years. Abcam is leading the way in addressing this with our range of recombinant monoclonal antibodies and knockout edited cell lines for gold-standard validation. Please check that this product meets your needs before purchasing.</p> <p>If you have any questions, special requirements or concerns, please send us an inquiry and/or contact our Support team ahead of purchase. Recommended alternatives for this product can be found below, along with publications, customer reviews and Q&amp;As</p>

#### 性能

形式	Liquid
存放说明	Shipped at 4°C. Store at 4°C (stable for up to 12 months). Store at -20°C or -80°C.
存储溶液	pH: 7.2 Preservative: 0.02% Sodium azide Constituent: PBS
纯度	Immunogen affinity purified
克隆	多克隆
同种型	IgG

#### 应用

## The Abpromise guarantee

**Abpromise™** 承诺保证使用ab105377于以下的经测试应用

“应用说明”部分 下显示的仅为推荐的起始稀释度;实际最佳的稀释度/浓度应由使用者检定。

应用	Ab评论	说明
WB		Use a concentration of 1 - 2 µg/ml. Predicted molecular weight: 134 kDa.
ICC		Use a concentration of 10 - 20 µg/ml.

## 靶标

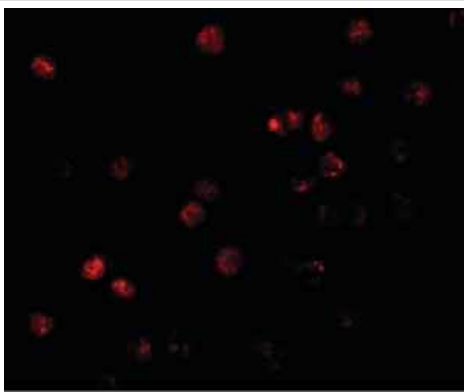
### 序列相似性

Belongs to the cation transport ATPase (P-type) (TC 3.A.3) family. Type IV subfamily.

### 细胞定位

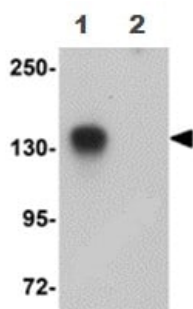
Membrane.

## 图片



Immunofluorescence of ATP11B in K562 cells with ab105377 at 20 µg/mL.

Immunocytochemistry - Anti-ATP11B antibody (ab105377)



**All lanes :** Anti-ATP11B antibody (ab105377) at 1 µg/ml

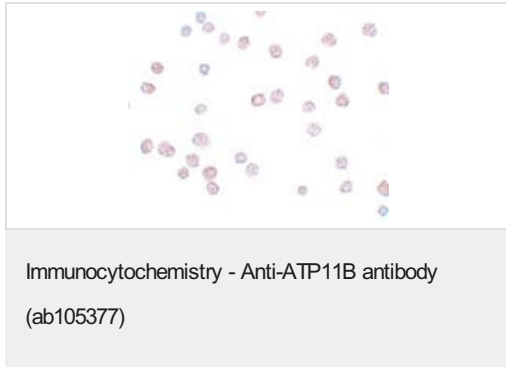
**Lane 1 :** K562 cell tissue lysate without blocking peptide

**Lane 2 :** K562 cell tissue lysate with blocking peptide

Lysates/proteins at 15 µg per lane.

**Predicted band size:** 134 kDa

Western blot - Anti-ATP11B antibody (ab105377)



ab105377 at 10 µg/ml staining ATP11B in K562 cells by  
Immunocytochemistry

**Please note:** All products are "FOR RESEARCH USE ONLY. NOT FOR USE IN DIAGNOSTIC PROCEDURES"

### Our Abpromise to you: Quality guaranteed and expert technical support

---

- Replacement or refund for products not performing as stated on the datasheet
- Valid for 12 months from date of delivery
- Response to your inquiry within 24 hours
- We provide support in Chinese, English, French, German, Japanese and Spanish
- Extensive multi-media technical resources to help you
- We investigate all quality concerns to ensure our products perform to the highest standards

If the product does not perform as described on this datasheet, we will offer a refund or replacement. For full details of the Abpromise, please visit <https://www.abcam.cn/abpromise> or contact our technical team.

### Terms and conditions

---

- Guarantee only valid for products bought direct from Abcam or one of our authorized distributors