


Anti-ATG4B antibody [EPR6436(2)] ab154843

敲除验证 重组 RabMAb

★★★★★ 2 Abreviews 6 References 5 图像

概述

产品名称	Anti-ATG4B抗体[EPR6436(2)]
描述	兔单克隆抗体[EPR6436(2)] to ATG4B
宿主	Rabbit
经测试应用	适用于: Flow Cyt (Intra), WB 不适用于: ICC/IF, IHC-P or IP
种属反应性	与反应: Mouse, Human 预测可用于: Rat 
免疫原	Synthetic peptide within Human ATG4B. The exact sequence is proprietary.
阳性对照	Recombinant Human ATG4B protein (ab123195) can be used as a positive control in WB. Ramos, 293T, Jurkat and HeLa cell lysates; Jurkat cells.
常规说明	This product is a recombinant monoclonal antibody, which offers several advantages including: - High batch-to-batch consistency and reproducibility - Improved sensitivity and specificity - Long-term security of supply - Animal-free production For more information see here . Our RabMAb [®] technology is a patented hybridoma-based technology for making rabbit monoclonal antibodies. For details on our patents, please refer to RabMAb[®] patents .

性能

形式	Liquid
存放说明	Shipped at 4°C. Store at -20°C.
存储溶液	pH: 7.2 Preservative: 0.01% Sodium azide Constituents: 9% PBS, 40% Glycerol (glycerin, glycerine), 0.05% BSA, 50% Tissue culture supernatant
纯度	Tissue culture supernatant
克隆	单克隆

克隆编号EPR6436(2)

同种型IgG

应用

The Abpromise guarantee **Abpromise™**承诺保证使用ab154843于以下的经测试应用

“应用说明”部分 下显示的仅为推荐的起始稀释度;实际最佳的稀释度/浓度应由使用者检定。

应用	Ab评论	说明
Flow Cyt (Intra)		1/100 - 1/500. ab172730 - Rabbit monoclonal IgG, is suitable for use as an isotype control with this antibody.
WB	★★★★★ (1)	1/1000 - 1/10000. Predicted molecular weight: 44 kDa.

应用说明 Is unsuitable for ICC/IF, IHC-P or IP.

靶标

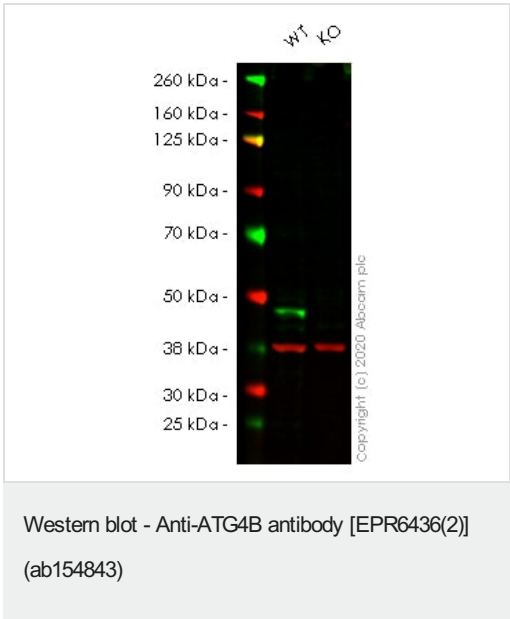
功能 Cysteine protease required for autophagy, which cleaves the C-terminal part of either MAP1LC3, GABARAPL2 or GABARAP, allowing the liberation of form I. A subpopulation of form I is subsequently converted to a smaller form (form II). Form II, with a revealed C-terminal glycine, is considered to be the phosphatidylethanolamine (PE)-conjugated form, and has the capacity for the binding to autophagosomes.

组织特异性 Mainly expressed in the skeletal muscle, followed by brain, heart, liver and pancreas.

序列相似性 Belongs to the peptidase C54 family.

细胞定位 Cytoplasm.

图片



All lanes : Anti-ATG4B antibody [EPR6436(2)] (ab154843) at 1/1000 dilution

Lane 1 : Wild-type HeLa cell lysate
Lane 2 : ATG4B knockout HeLa cell lysate

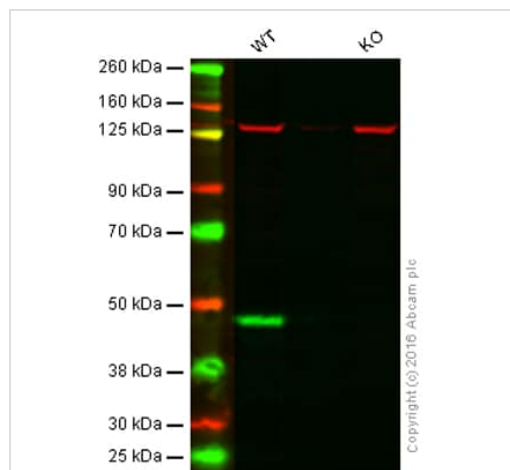
Lysates/proteins at 20 µg per lane.

Performed under reducing conditions.

Predicted band size: 44 kDa
Observed band size: 47 kDa

Lanes 1 - 2: Merged signal (red and green). Green - ab154843 observed at 47 kDa. Red - loading control **ab8245** (Mouse anti-GAPDH antibody [6C5]) observed at 37 kDa.

ab154843 was shown to react with ATG4B in wild-type HEK293T cells in Western blot with loss of signal observed in ATG4B knockout cell line **ab265814** (ATG4B knockout cell lysate **ab257364**). Wild-type and ATG4B knockout HEK293T cell lysates were subjected to SDS-PAGE. Membranes were blocked in 3 % milk in TBS-T (0.1 % Tween®) before incubation with ab154843 and **ab8245** (Mouse anti-GAPDH antibody [6C5]) overnight at 4 °C at a 1 in 1000 dilution and a 1 in 20000 dilution respectively. Blots were incubated with Goat anti-Rabbit IgG H&L (IRDye® 800CW) preabsorbed (**ab216773**) and Goat anti-Mouse IgG H&L (IRDye® 680RD) preabsorbed (**ab216776**) secondary antibodies at 1 in 20000 dilution for 1 h at room temperature before imaging.



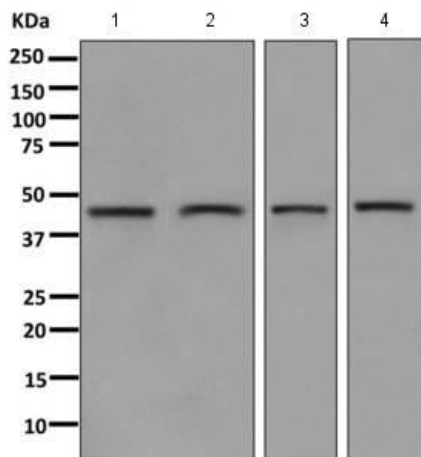
Western blot - Anti-ATG4B antibody [EPR6436(2)] (ab154843)

Lane 1: Wild-type HAP1 cell lysate (20 µg)

Lane 2: ATG4B knockout HAP1 cell lysate (20 µg)

Lanes 1 - 2: Merged signal (red and green). Green - ab154843 observed at 47 kDa. Red - loading control, **ab18058**, observed at 130 kDa.

ab154843 was shown to specifically react with ATG4B when ATG4B knockout samples were used. Wild-type and ATG4B knockout samples were subjected to SDS-PAGE. ab154843 and **ab18058** (loading control to Vinculin) were diluted at 1/1000 and 1/10000 respectively and incubated overnight at 4°C. Blots were developed with Goat anti-Rabbit IgG H&L (IRDye® 800CW) preadsorbed (**ab216773**) and Goat anti-Mouse IgG H&L (IRDye® 680RD) preadsorbed (**ab216776**) secondary antibodies at 1/10000 dilution for 1 hour at room temperature before imaging.



Western blot - Anti-ATG4B antibody [EPR6436(2)] (ab154843)

All lanes : Anti-ATG4B antibody [EPR6436(2)] (ab154843) at 1/1000 dilution

Lane 1 : Ramos cell lysate

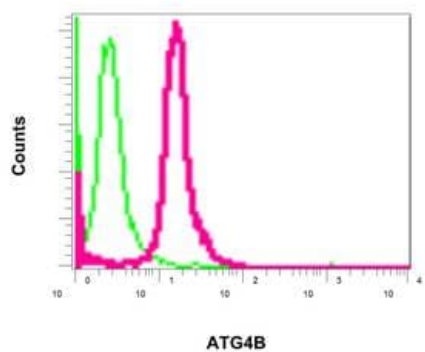
Lane 2 : 293T cell lysate

Lane 3 : Jurkat cell lysate

Lane 4 : HeLa cell lysate

Lysates/proteins at 10 µg per lane.

Predicted band size: 44 kDa



Flow Cytometry (Intracellular) - Anti-ATG4B antibody [EPR6436(2)] (ab154843)

Intracellular Flow Cytometry analysis of permeabilized Jurkat cells labeling ATG4B (red), using ab154843 at a 1/100 dilution, and negative control cells probed with a Rabbit IgG (green)

Why choose a recombinant antibody?



Research with confidence
Consistent and reproducible results



Long-term and scalable supply
Recombinant technology



Success from the first experiment
Confirmed specificity



Ethical standards compliant
Animal-free production

Anti-ATG4B antibody [EPR6436(2)] (ab154843)

Please note: All products are "FOR RESEARCH USE ONLY. NOT FOR USE IN DIAGNOSTIC PROCEDURES"

Our Abpromise to you: Quality guaranteed and expert technical support

- Replacement or refund for products not performing as stated on the datasheet
- Valid for 12 months from date of delivery
- Response to your inquiry within 24 hours

- We provide support in Chinese, English, French, German, Japanese and Spanish
- Extensive multi-media technical resources to help you
- We investigate all quality concerns to ensure our products perform to the highest standards

If the product does not perform as described on this datasheet, we will offer a refund or replacement. For full details of the Abpromise, please visit <https://www.abcam.cn/abpromise> or contact our technical team.

Terms and conditions

- Guarantee only valid for products bought direct from Abcam or one of our authorized distributors